



www.flitetest.com

# FT 3D



### Recommended electronics:

- Park 400, 810 kv minimum
- 18-30 amp
- 1300 - 1800 mAH 3s
- (4 ) 9 gram servos

### Throws:

- 10° deflection  
(elevator/rudder/aileron)
- Expo 25%
- (For smooth cruising and pattern flying.)
- Adjust to desired performance)

### Weight Without Battery

15.4 oz (439 g)

### Prop:

10 x 4.7 prop

black = cut

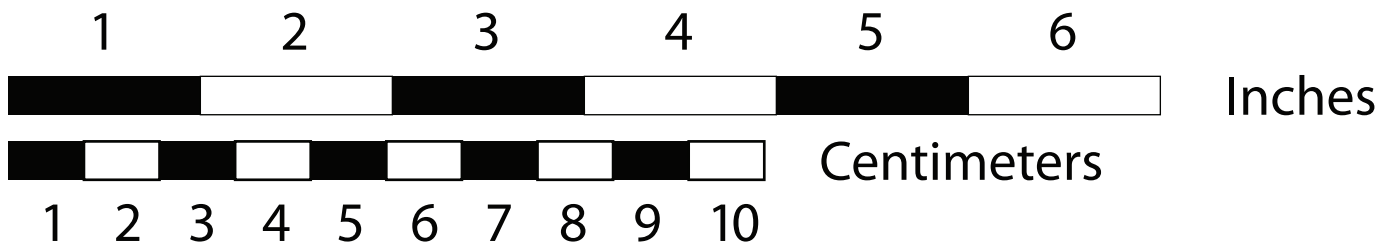
red = score 50%

blue = lightly crease

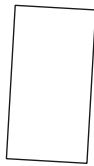
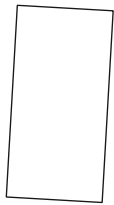
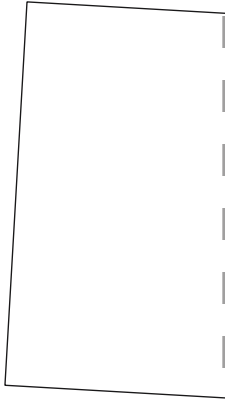
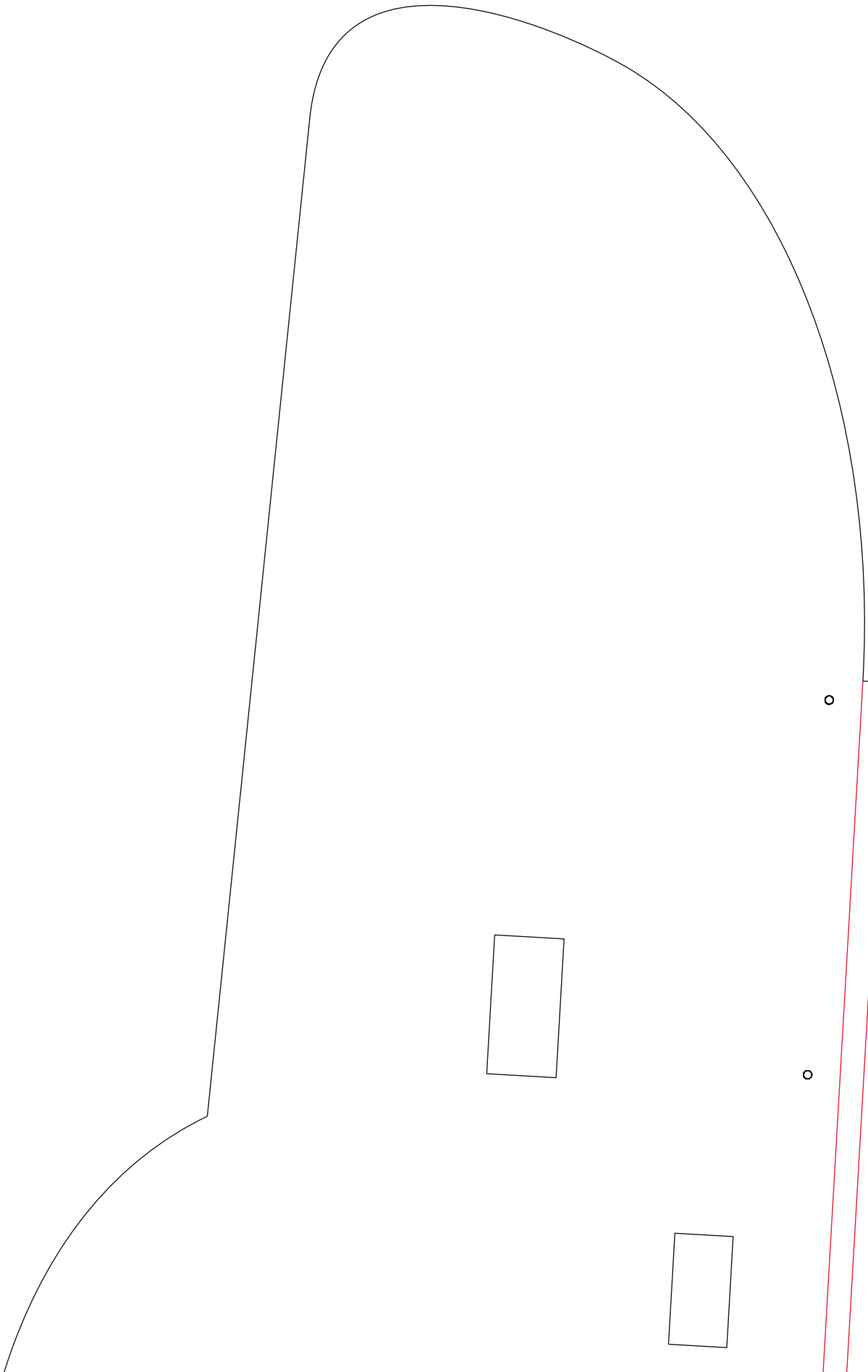
green ⊗ = cut small reference hole for VG placement on opposite side of wing.

### Tiled plans dimensions:

1	2	3	4	5	6	7	8
9	10	11	12	13	14	15	16
17	18	19	20	21	22		



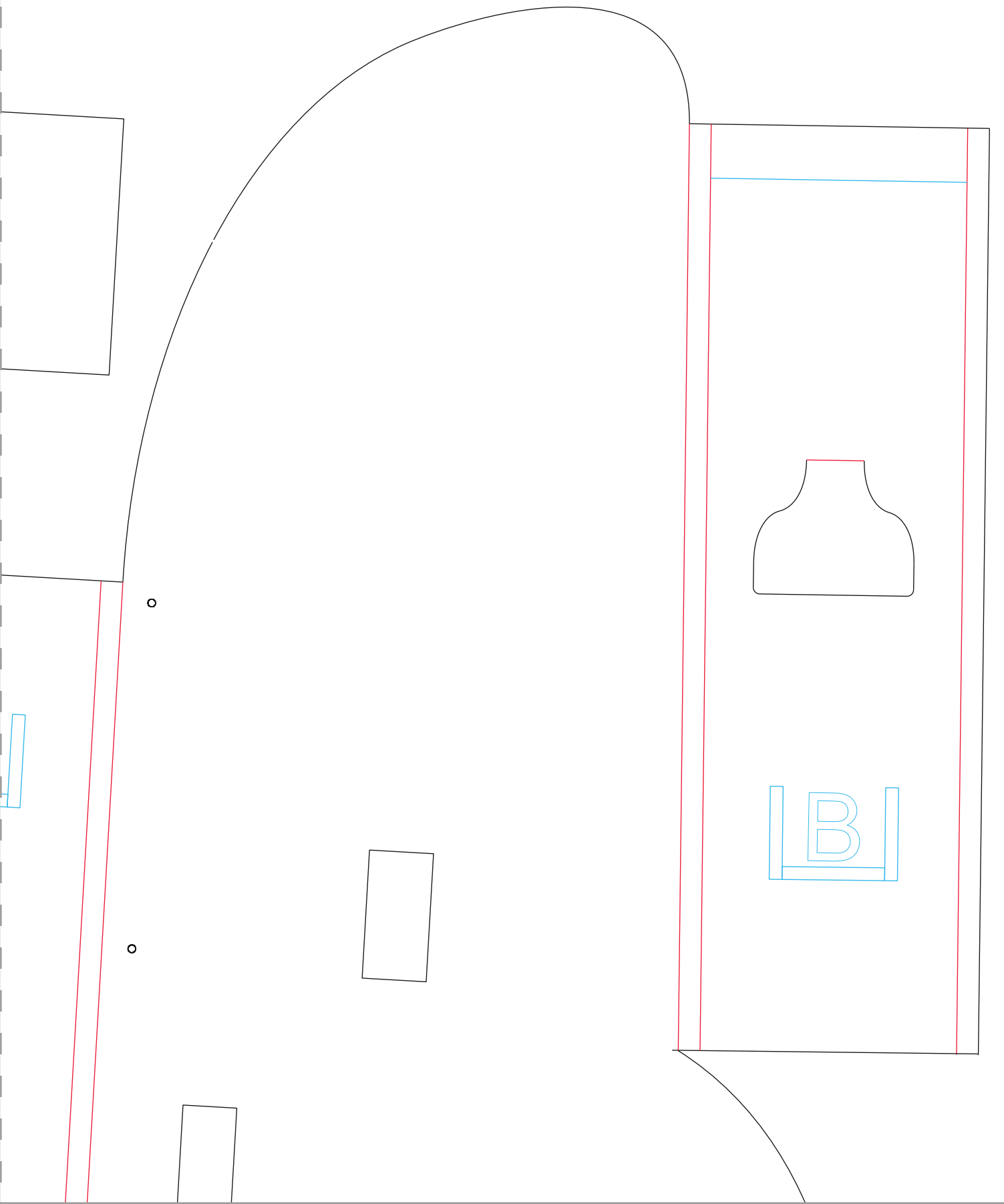
Design By: Josh Bixler

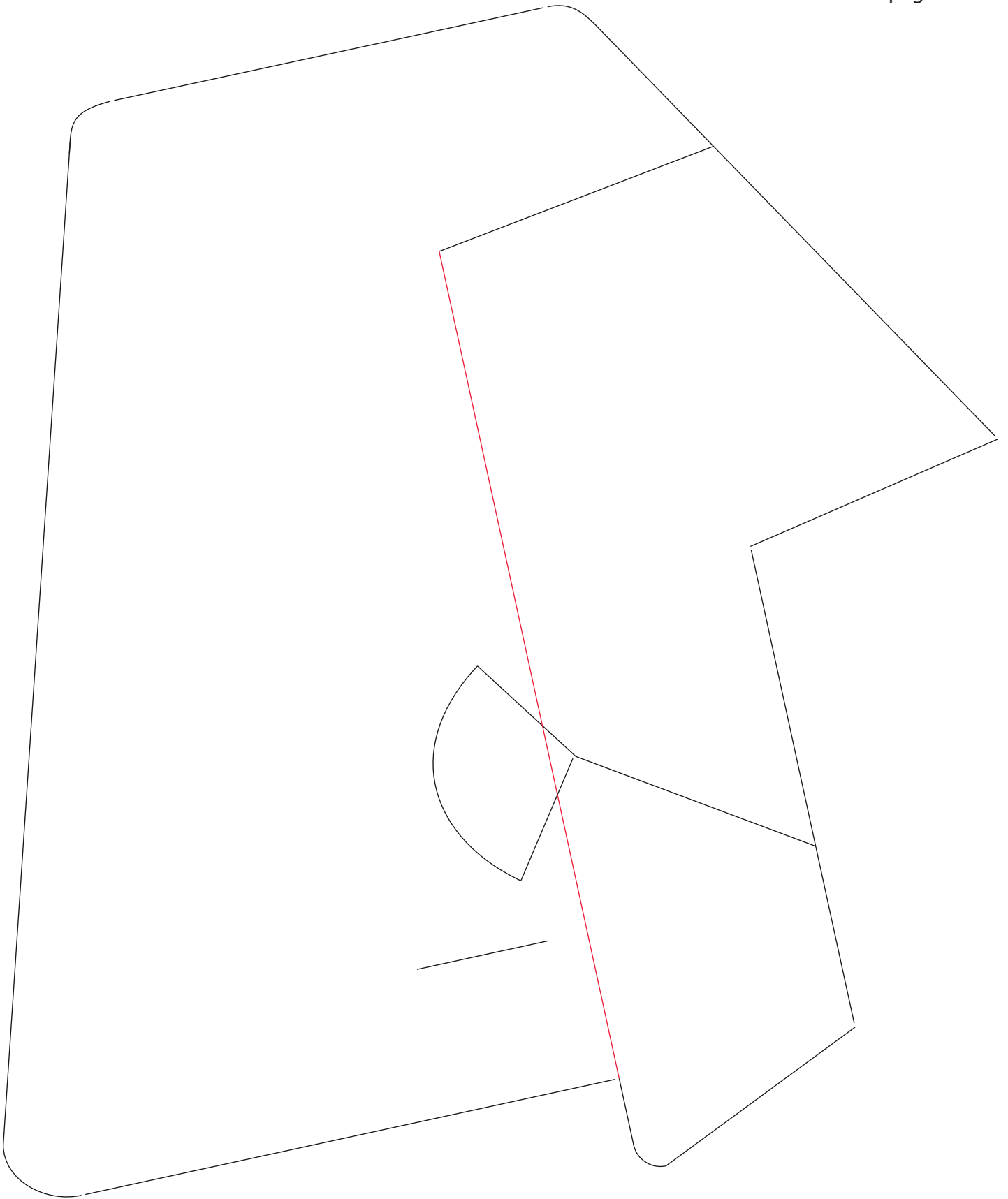


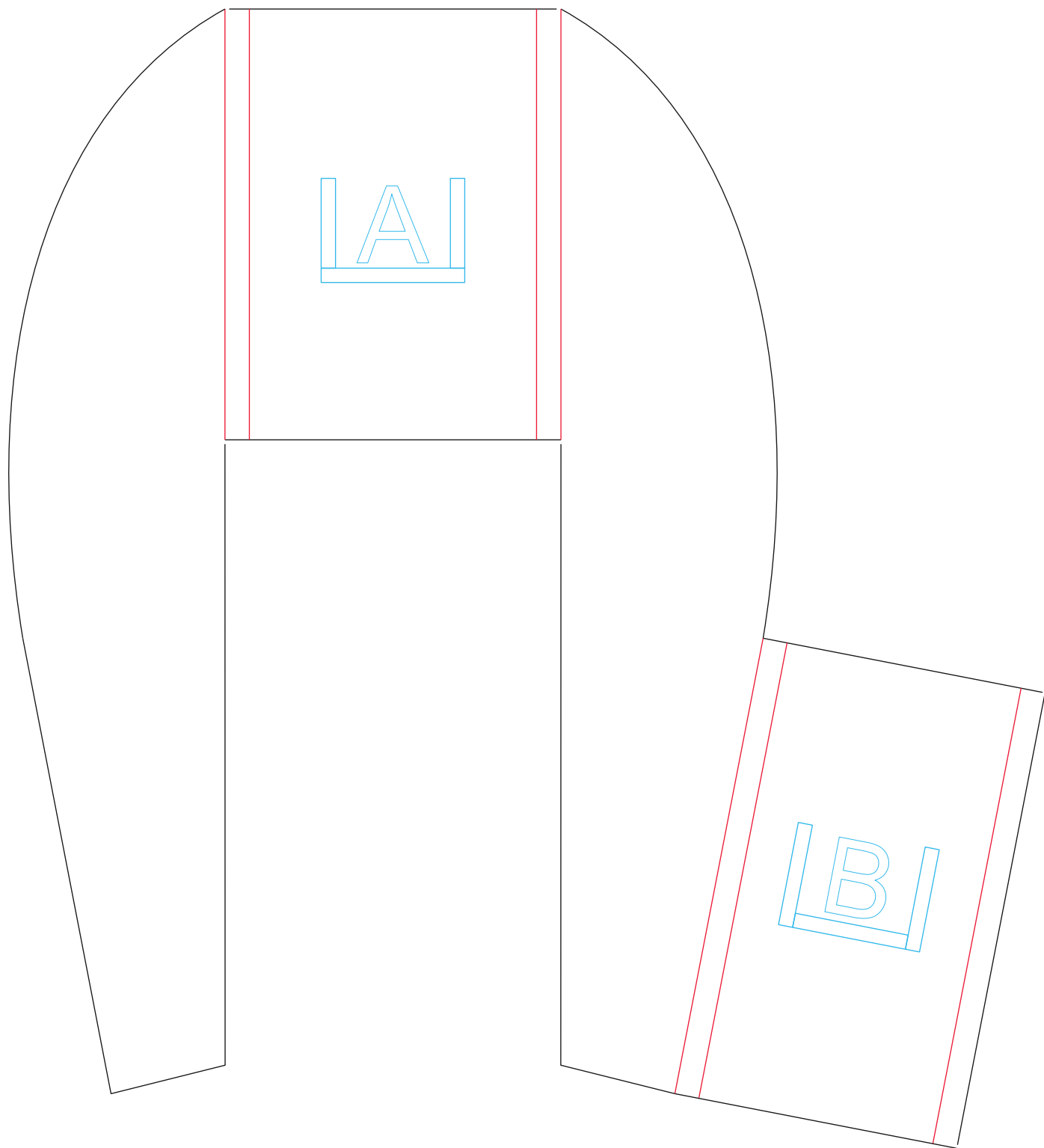
o

o

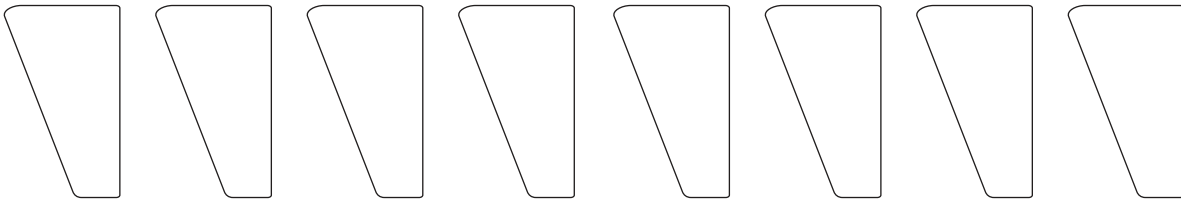
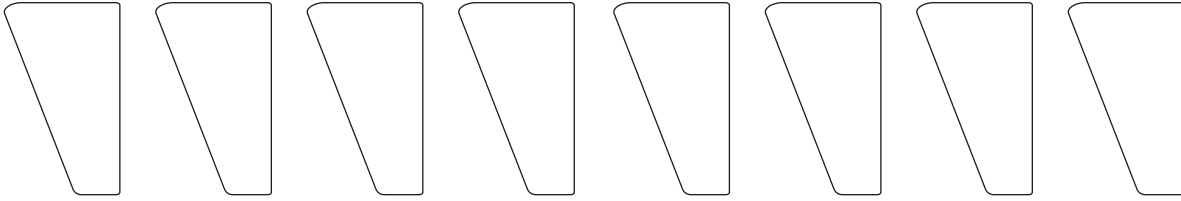
B



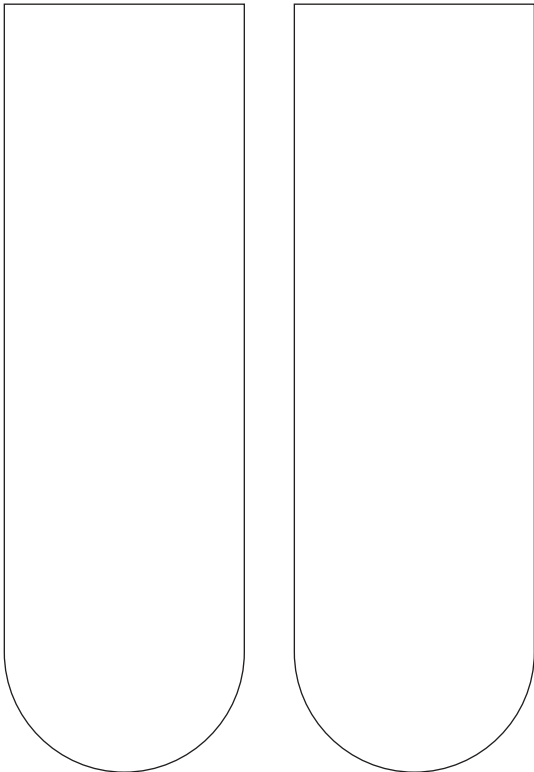




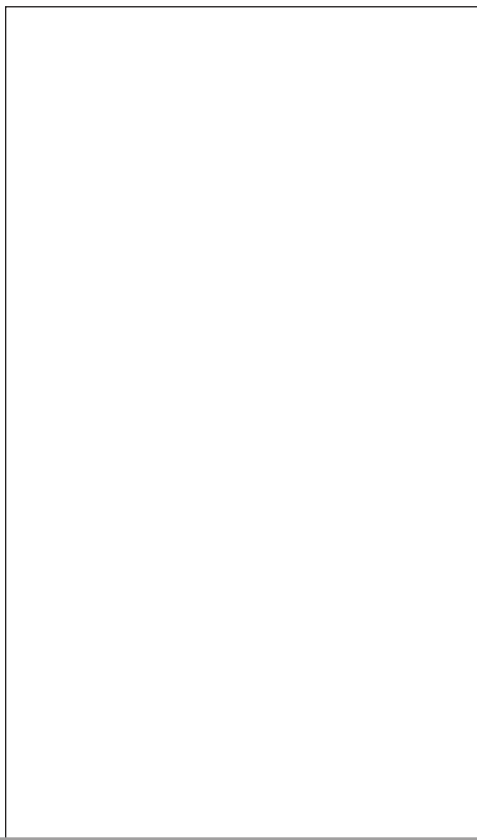
### vortex generators (poster board)

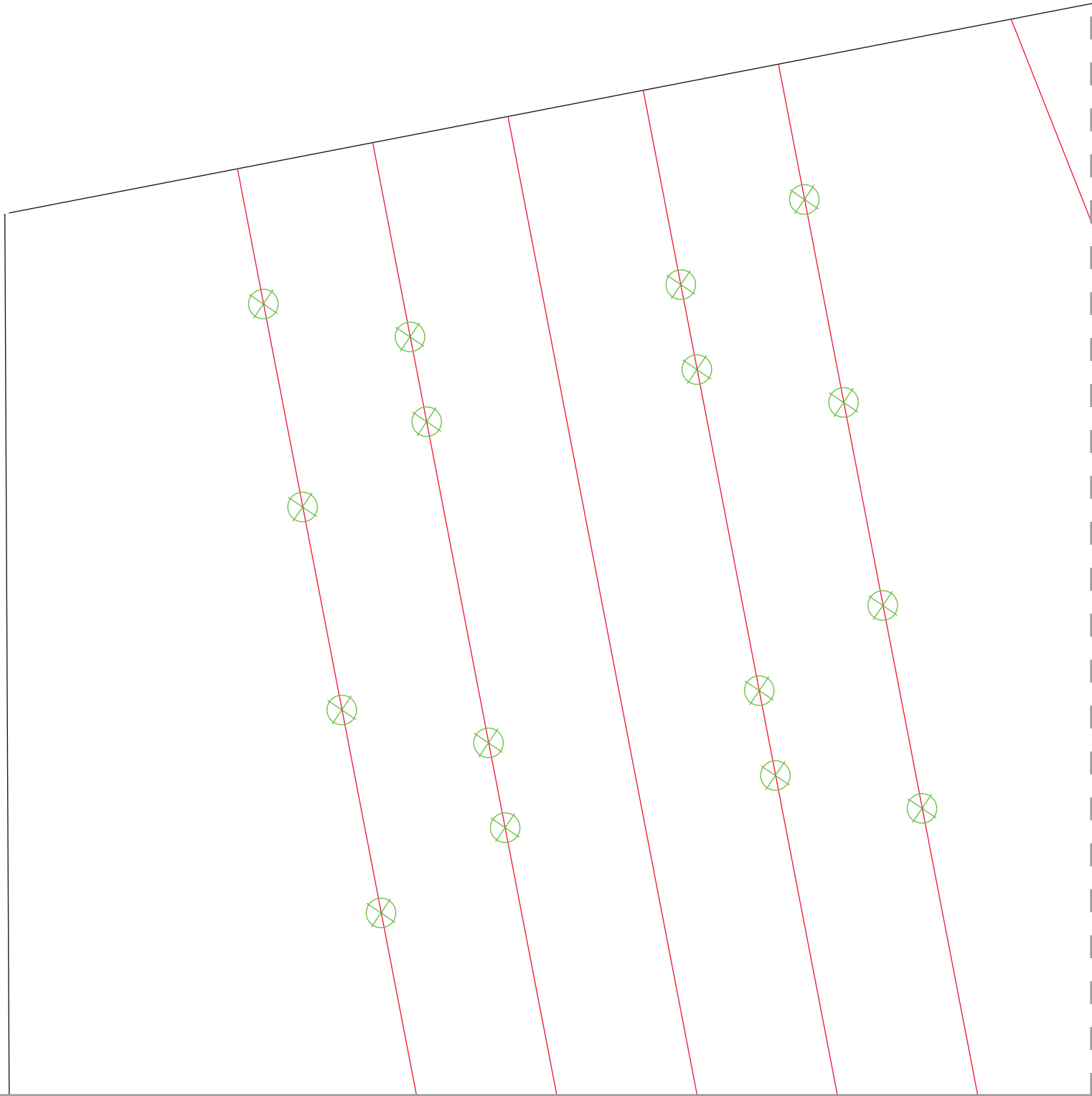


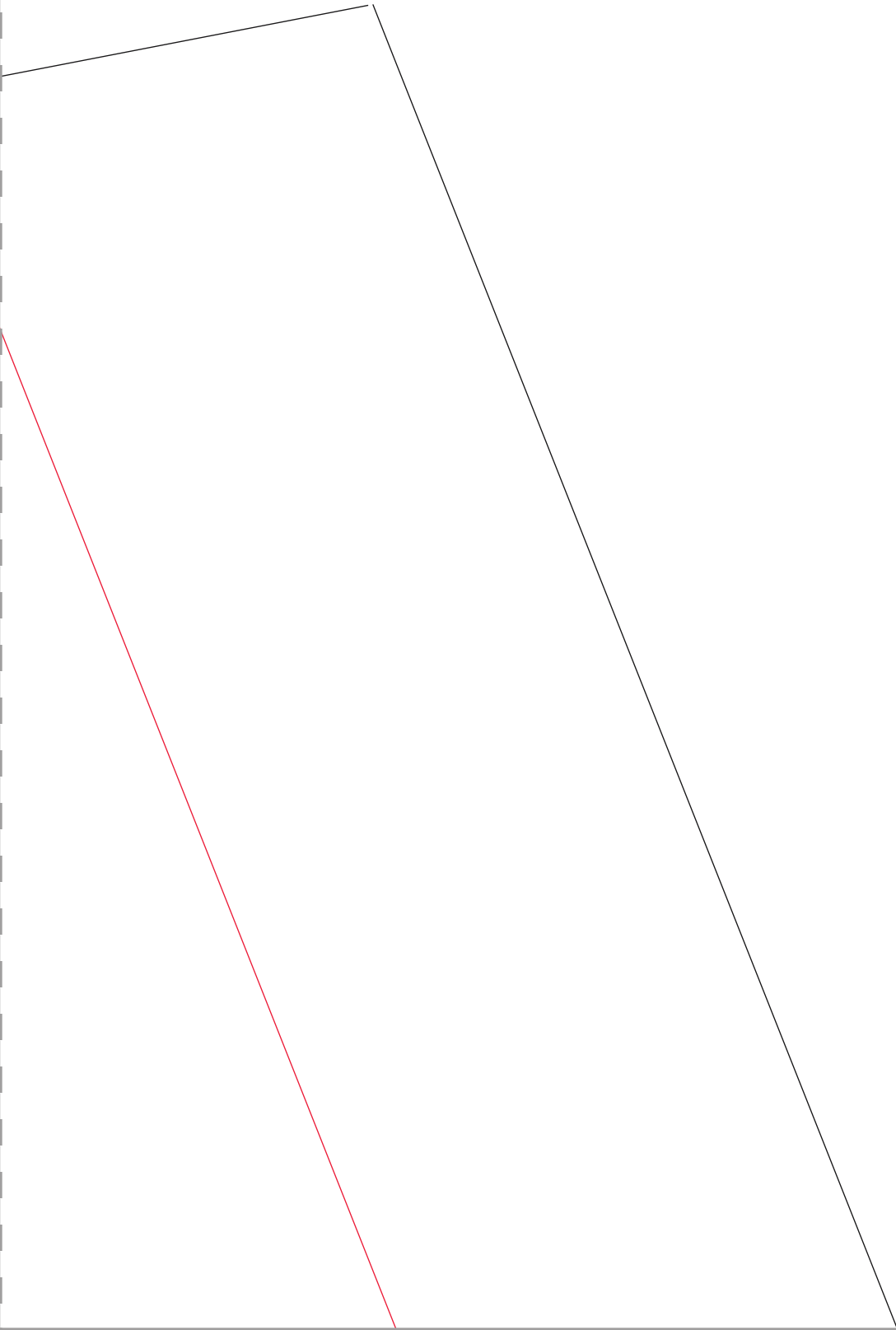
### wing plates (poster board)



### canopy hatch (poster board)

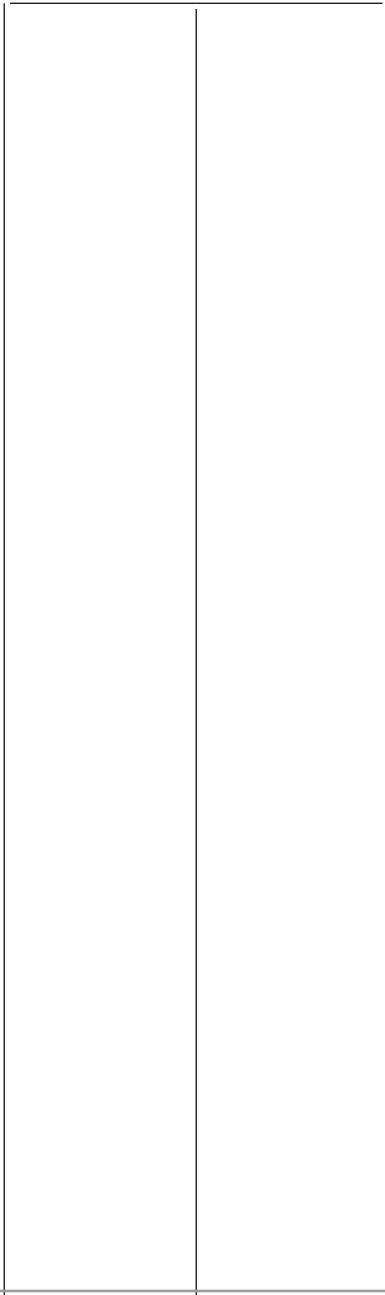
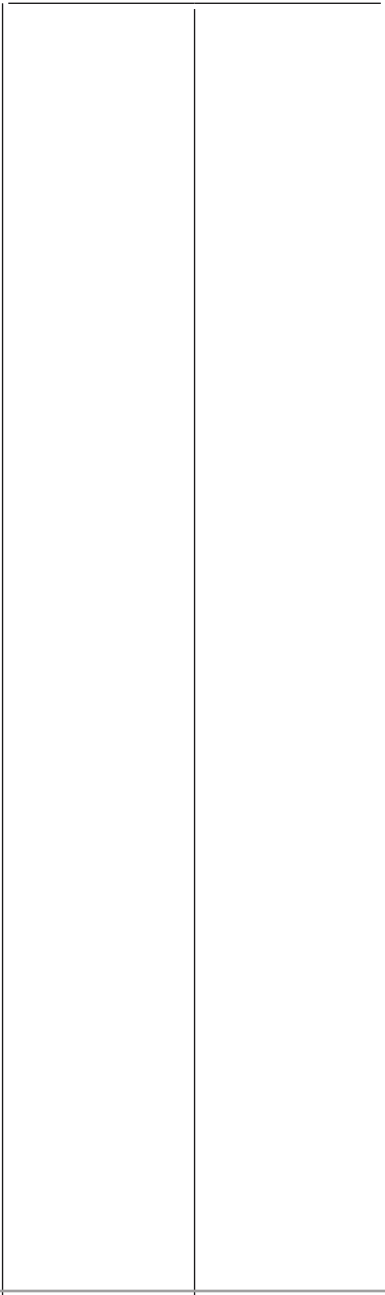
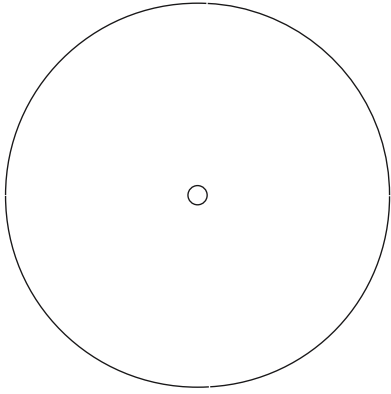


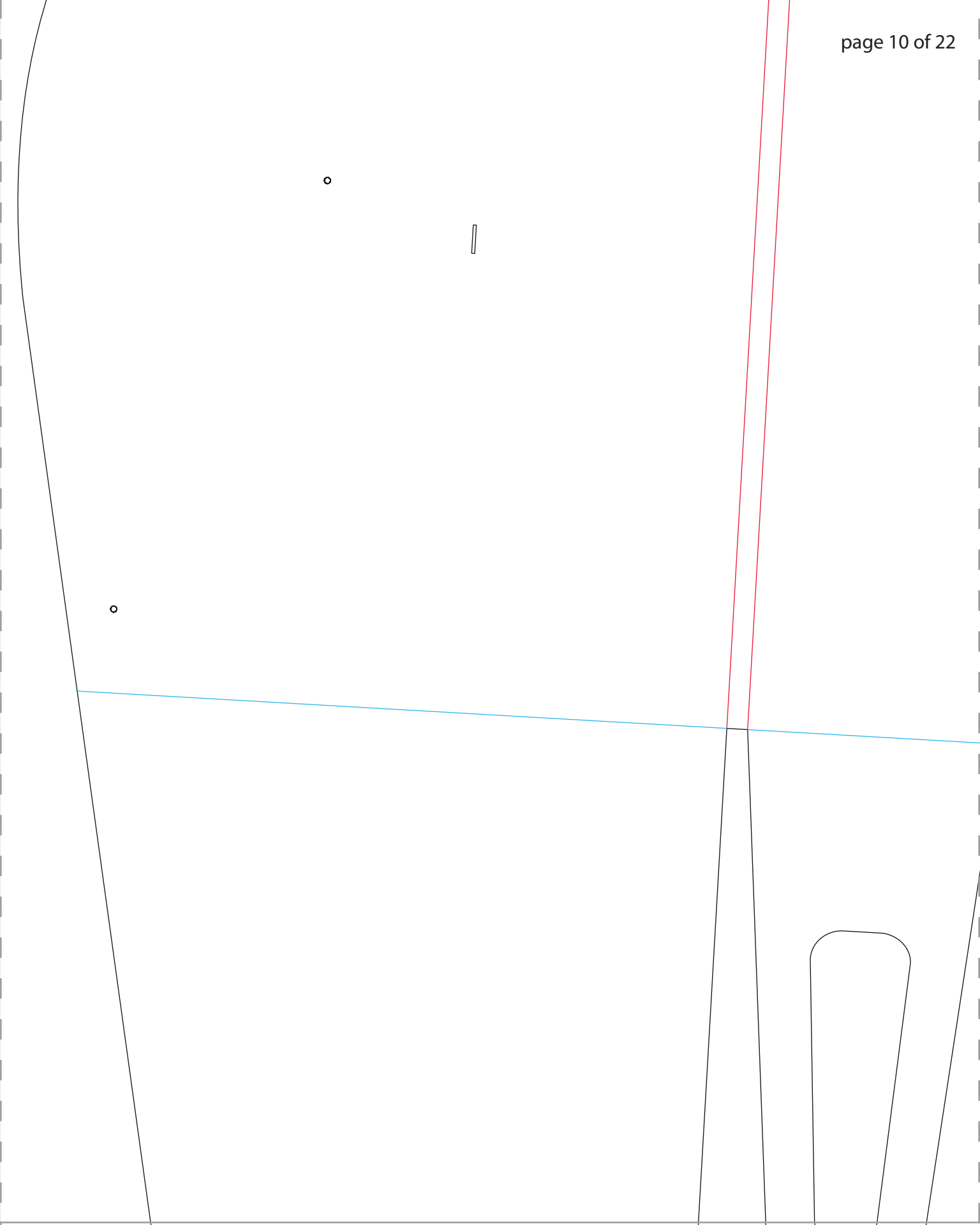


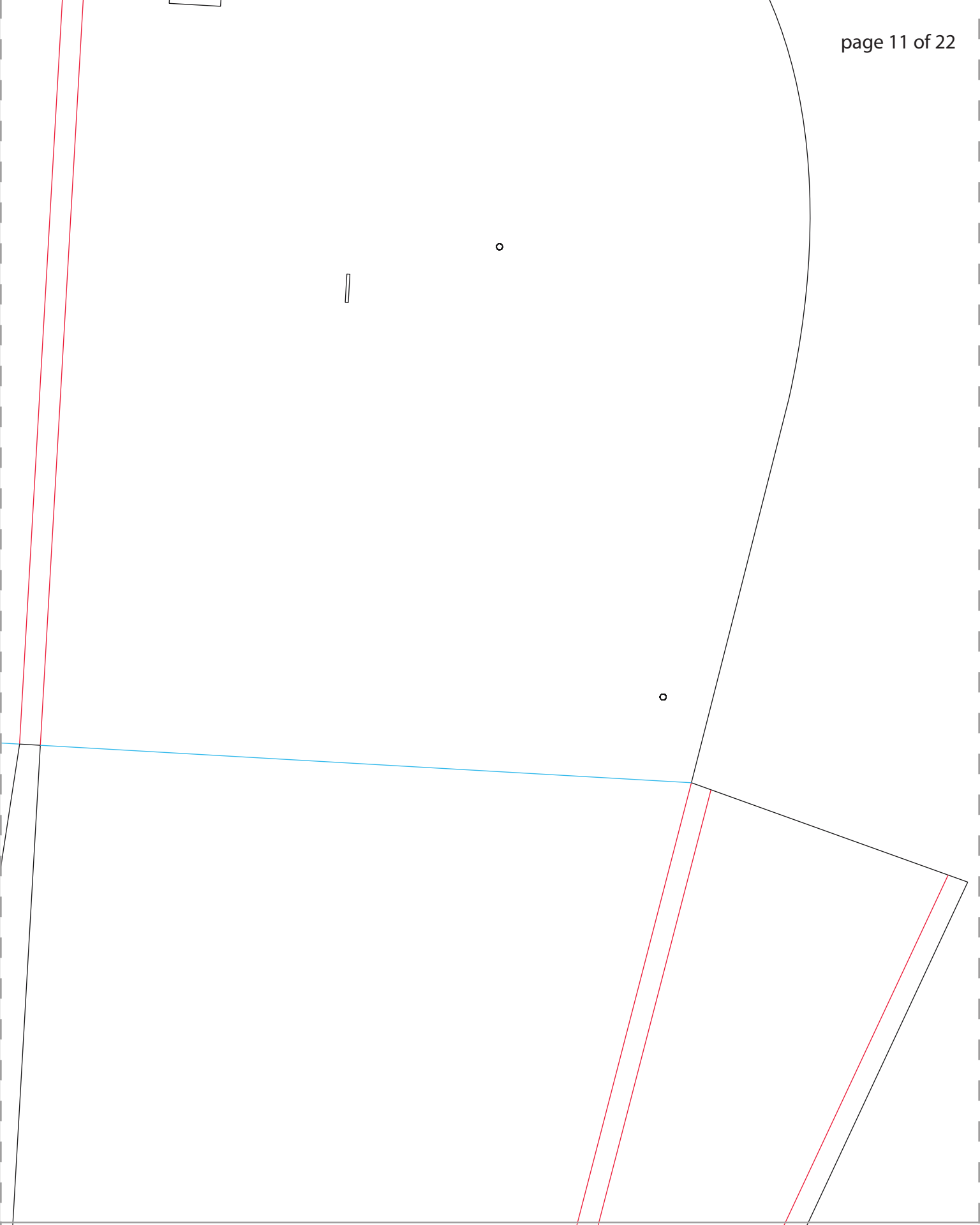


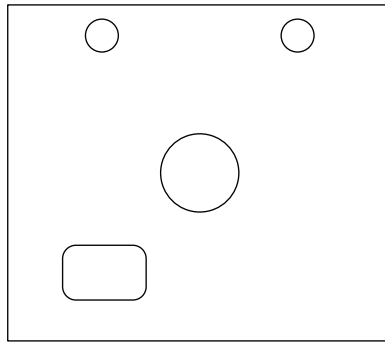


wheels (x6)







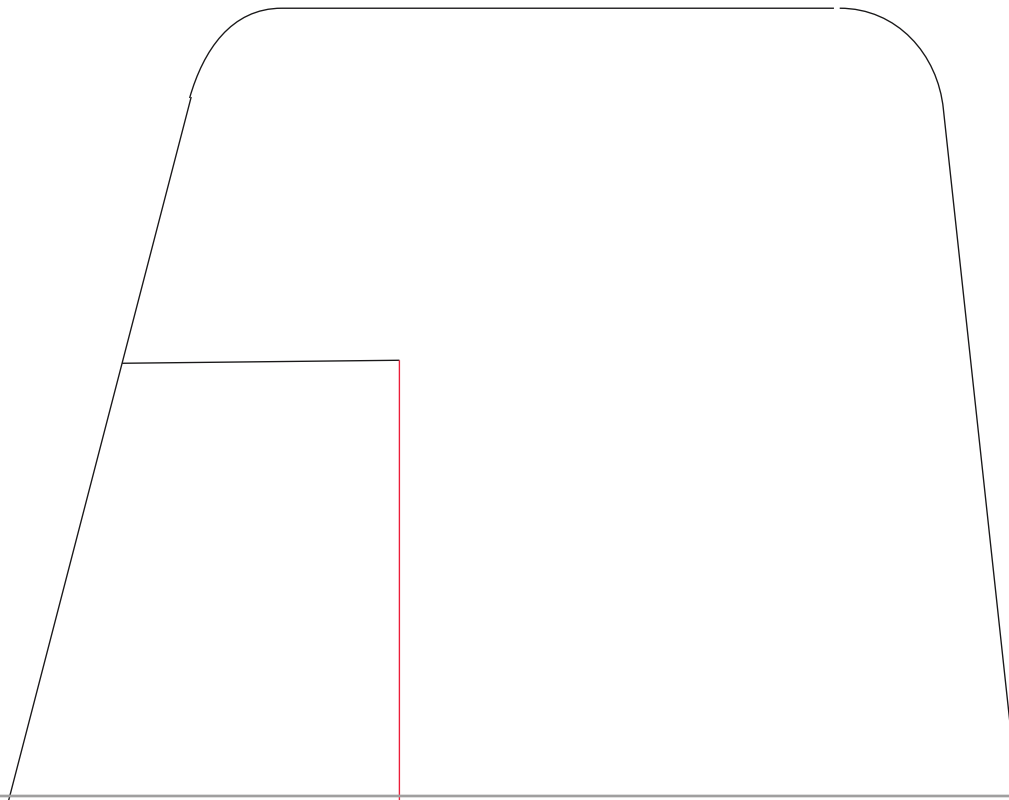


### Firewall

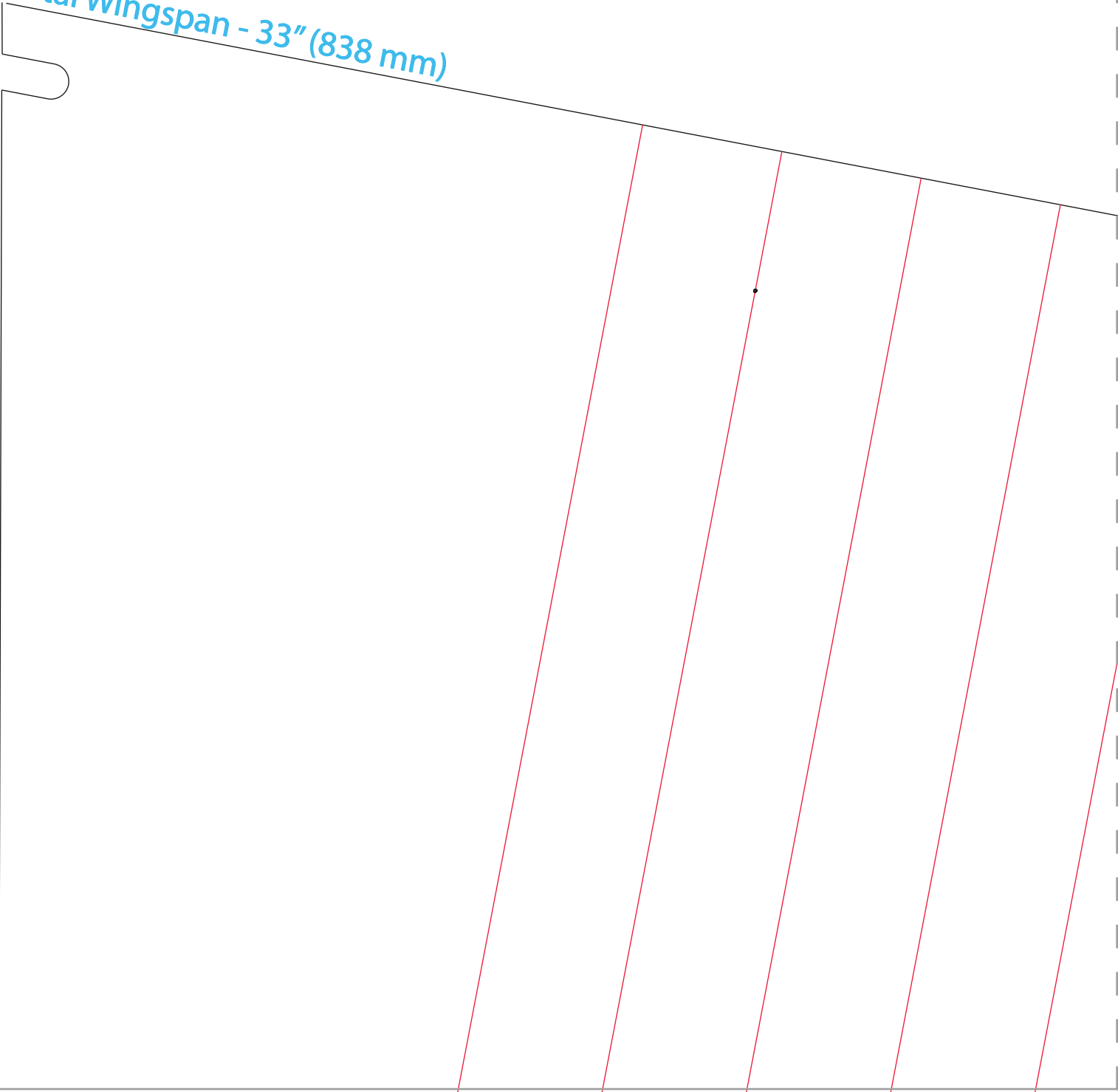
2" X 1 <sup>3</sup>/<sub>4</sub>" Inch  
(50mm X 45mm)

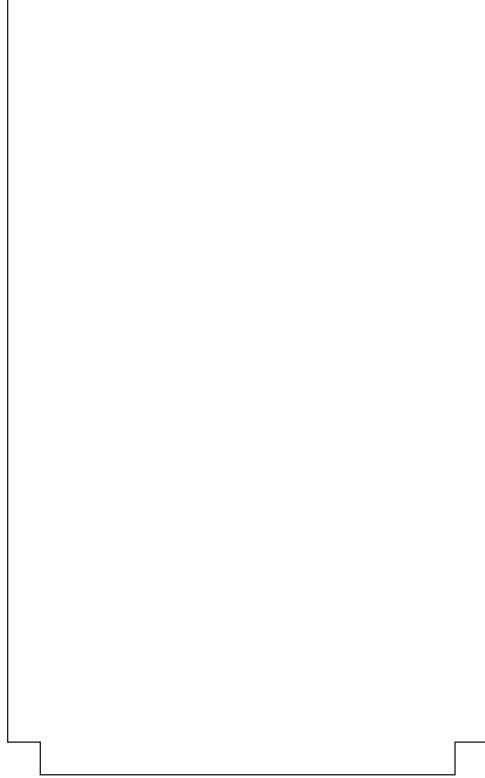
<sup>1</sup>/<sub>16</sub>" Inch thick  
(1.5mm)

Hobby Plywood



Total Wingspan - 33" (838 mm)







Total Wingspan - 33" (838 mm)

