

# Lazier-J Plans

Mk.II

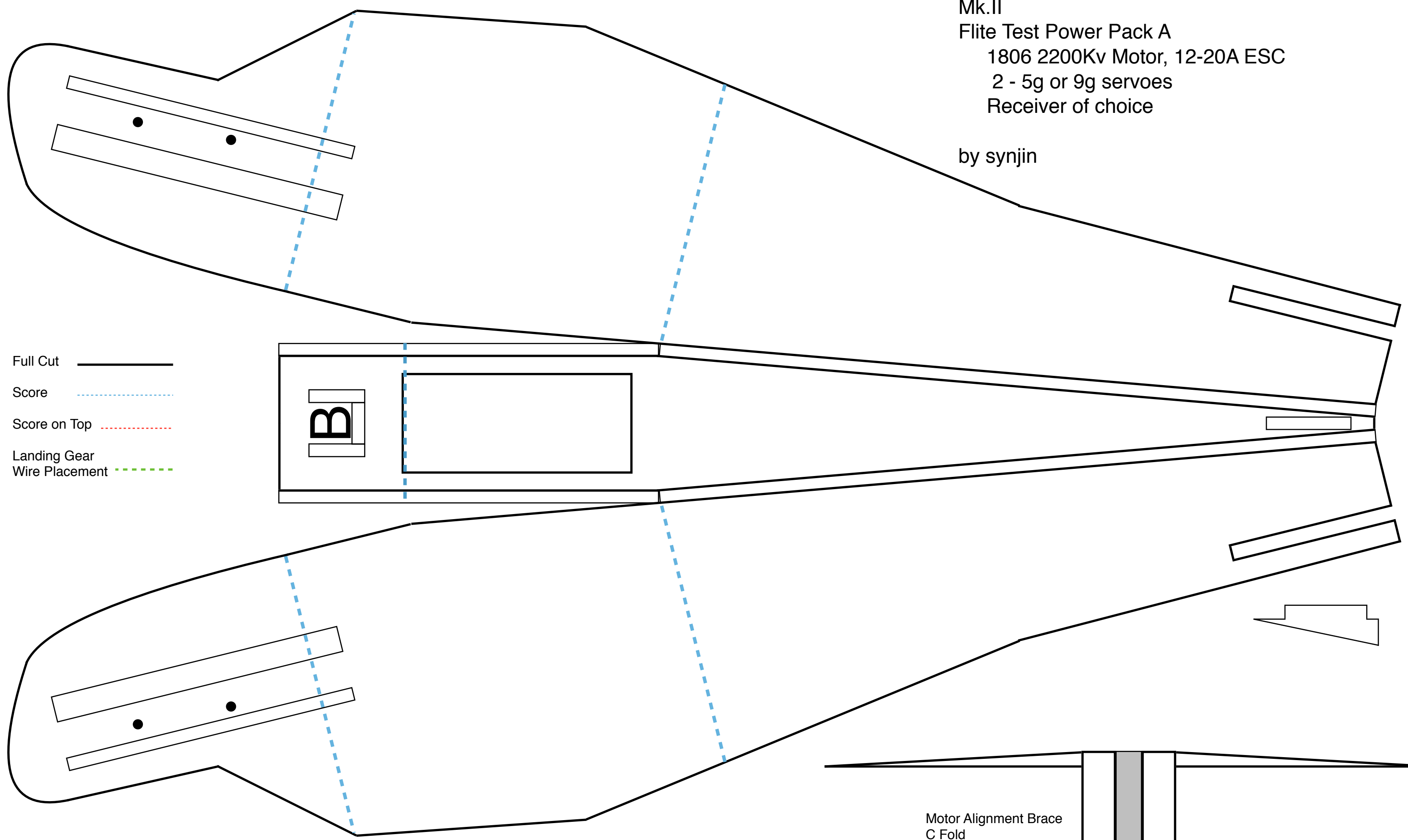
Flite Test Power Pack A

1806 2200Kv Motor, 12-20A ESC

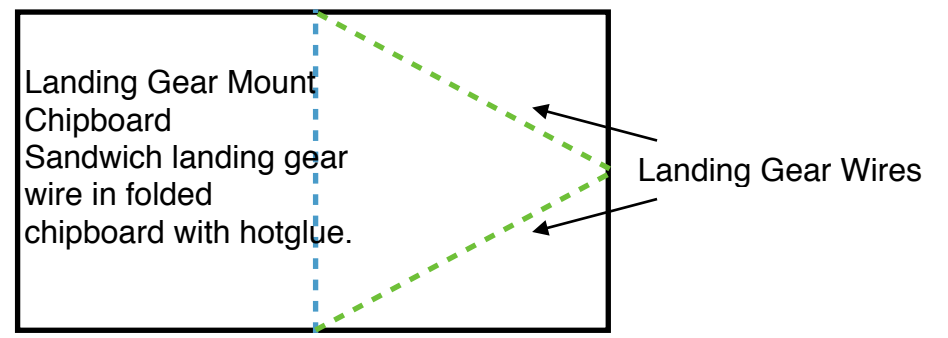
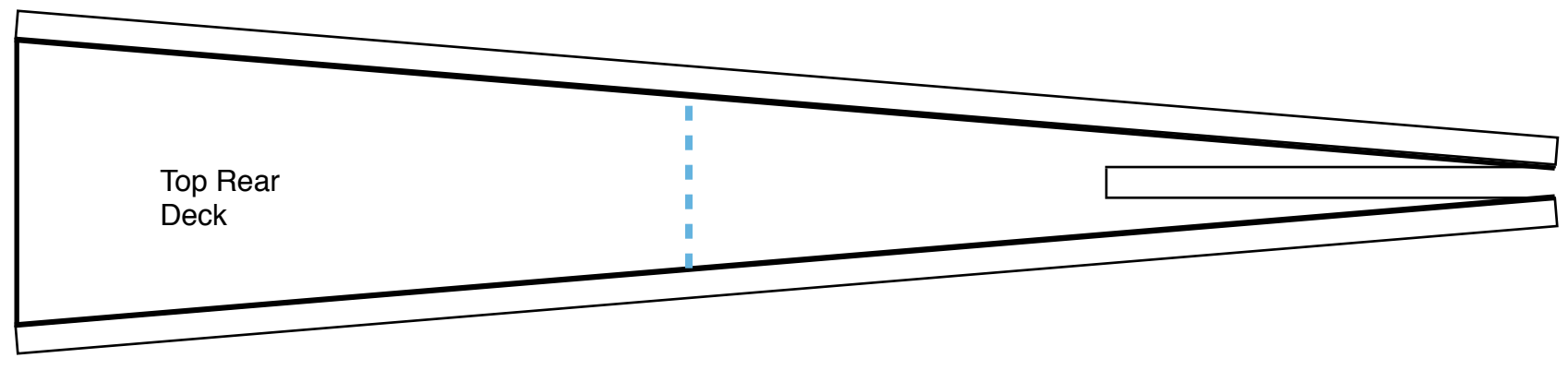
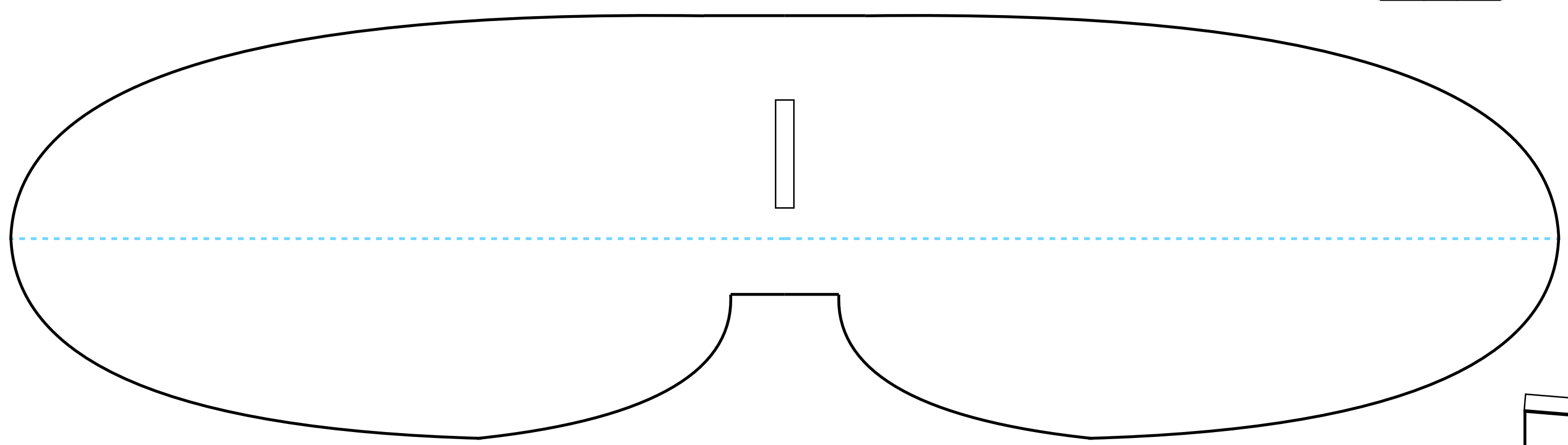
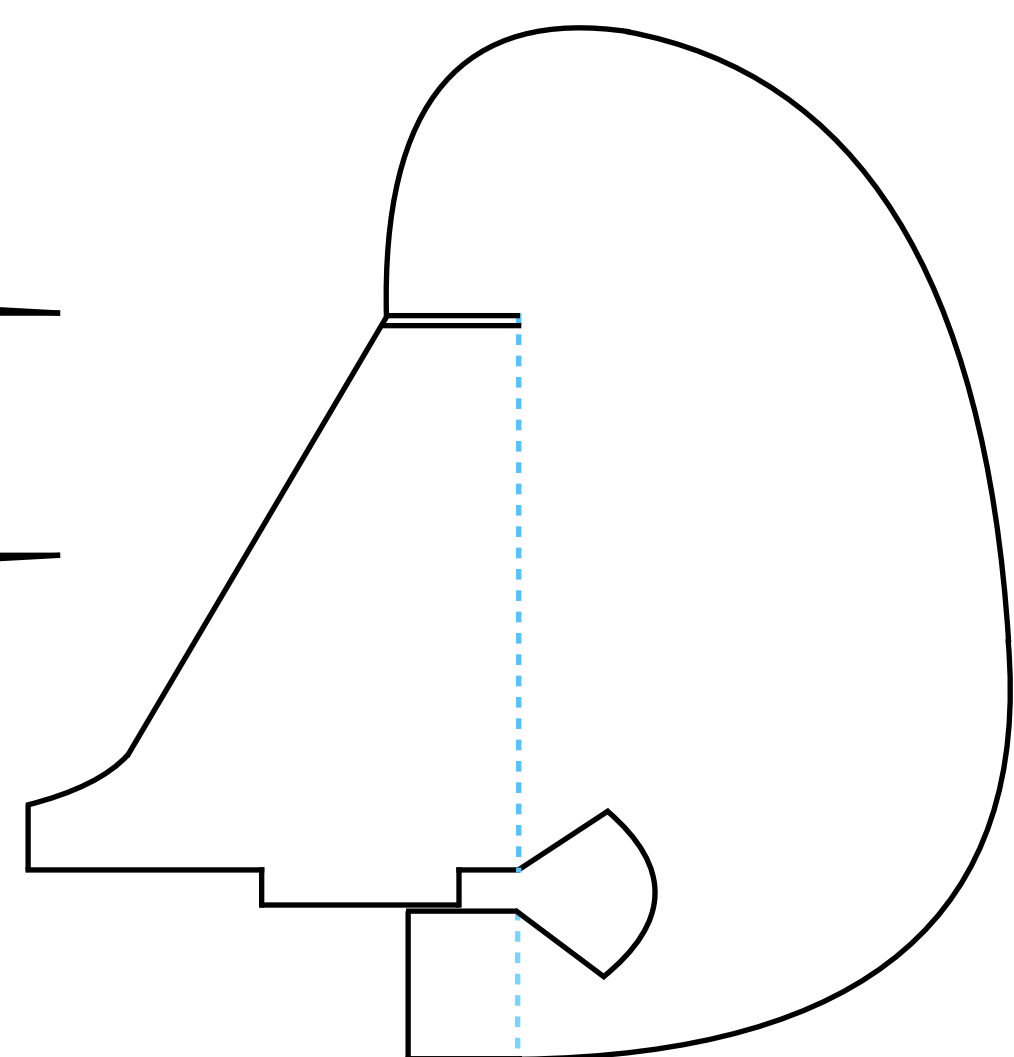
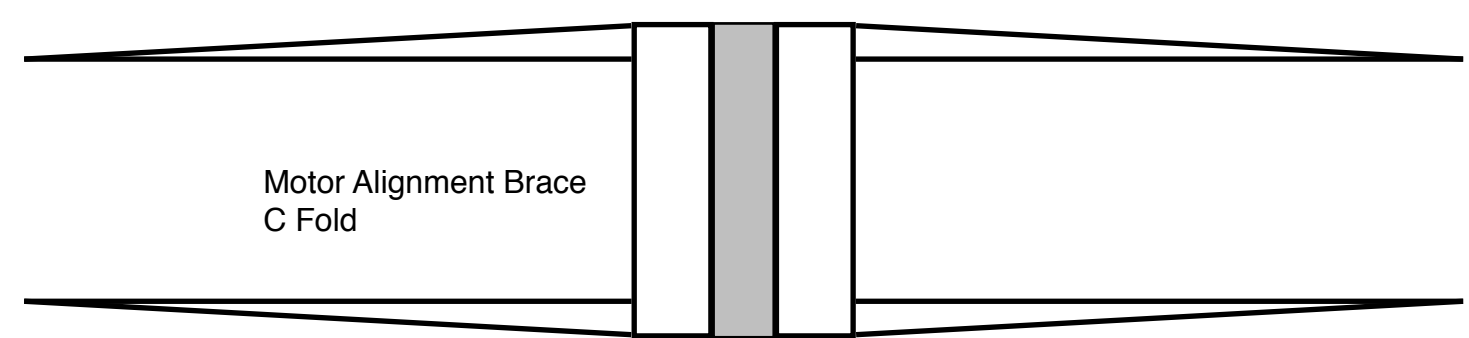
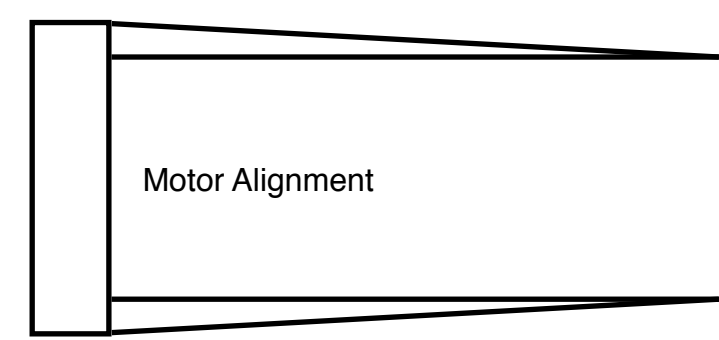
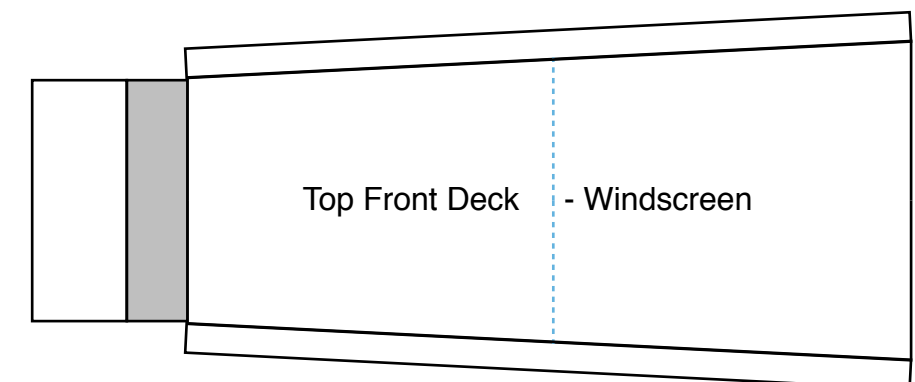
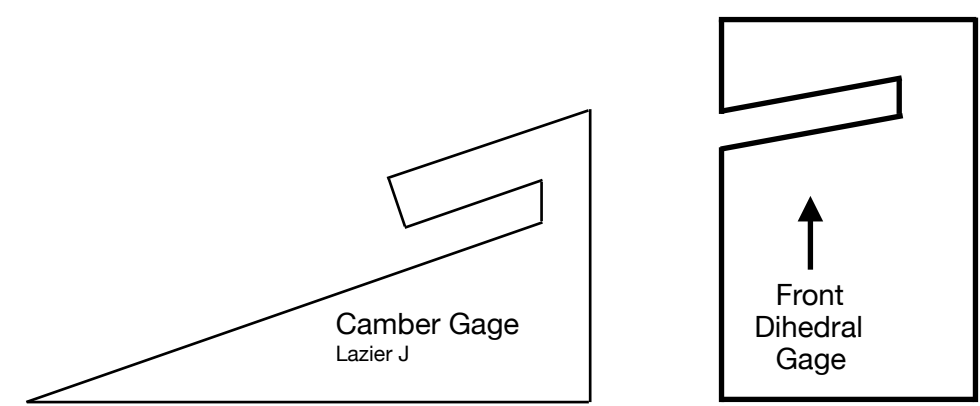
2 - 5g or 9g servoes

Receiver of choice

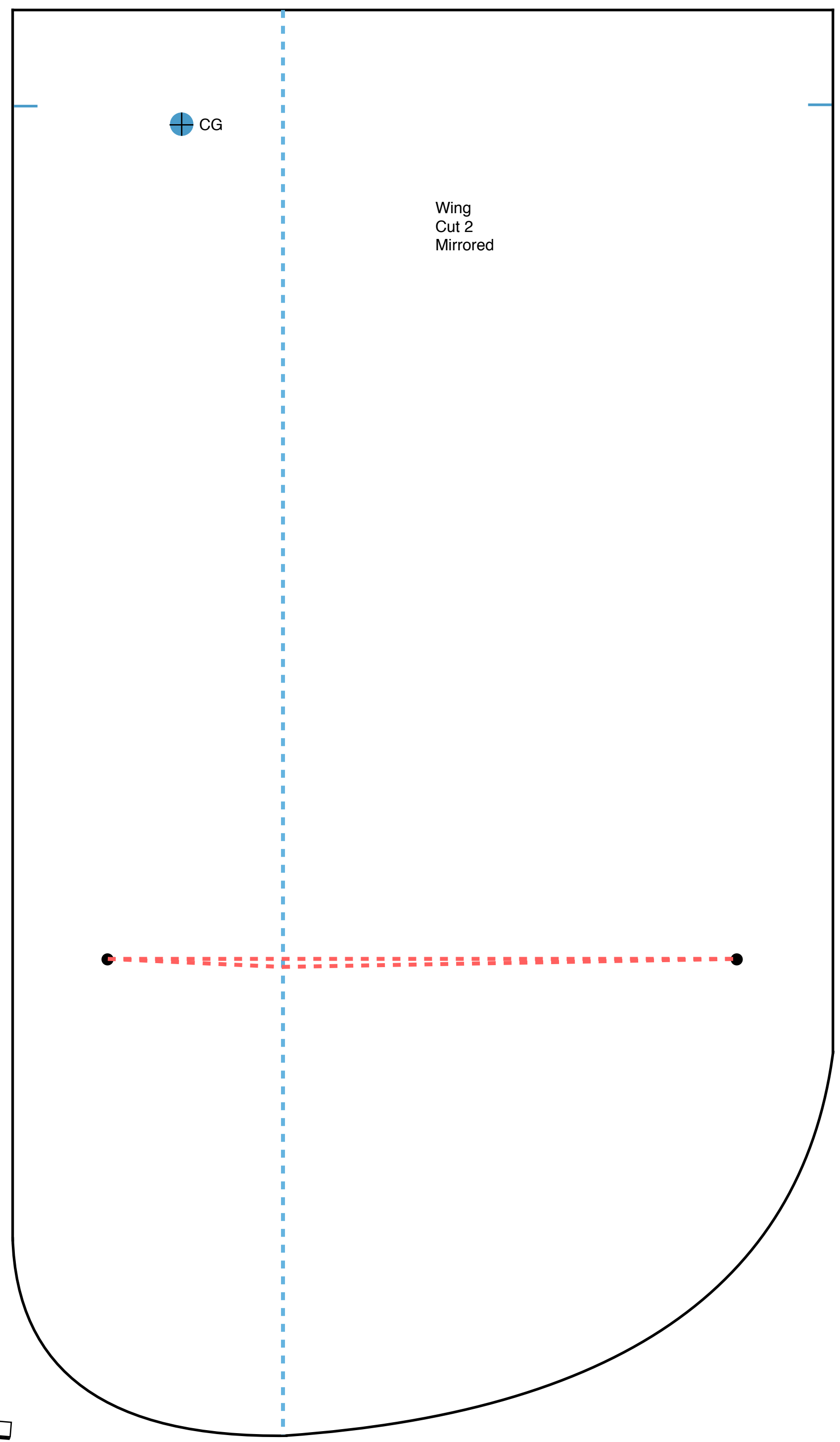
by synjin



- Full Cut ———
- Score - - - - -
- Score on Top - . . . . .
- Landing Gear
- Wire Placement - - - - -



Landing Gear Mount  
Chipboard  
Sandwich landing gear  
wire in folded  
chipboard with hotglue.



Wing  
Cut 2  
Mirrored

CG