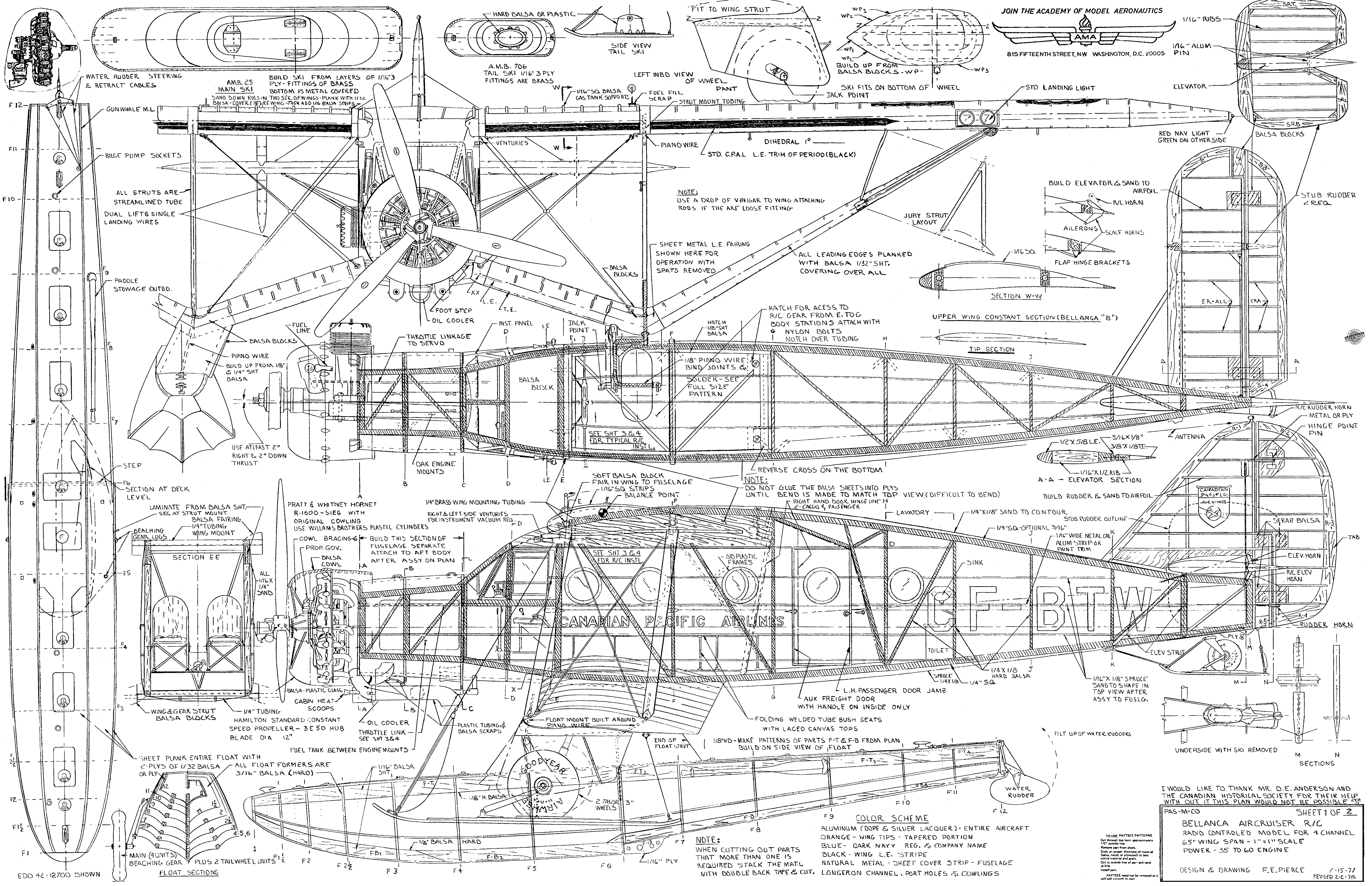




815 FIFTEENTH STREET, N.W. WASHINGTON, D.C. 20005



I WOULD LIKE TO THANK MR. D.E. ANDERSON AND THE CANADIAN HISTORICAL SOCIETY FOR THEIR HELP WITH OUT IT THIS PLAN WOULD NOT BE POSSIBLE

PAS-M-CO SHEET 1 OF 2

BELLANCA AIRCRUISER R/C
 RADIO CONTROLLED MODEL FOR 4 CHANNEL
 65" WING SPAN - 1" = 1" SCALE
 POWER - 35 TO 60 ENGINE

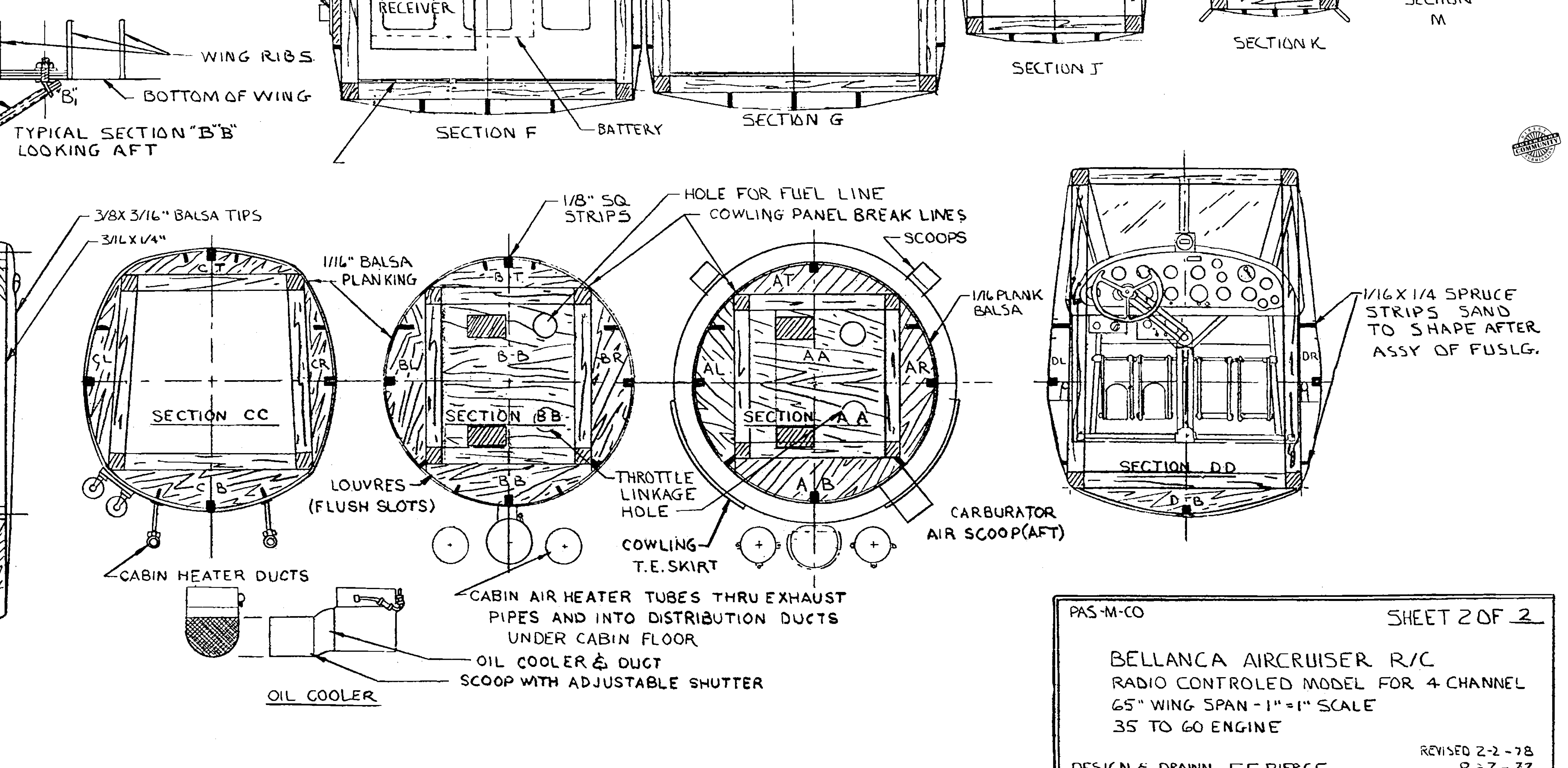
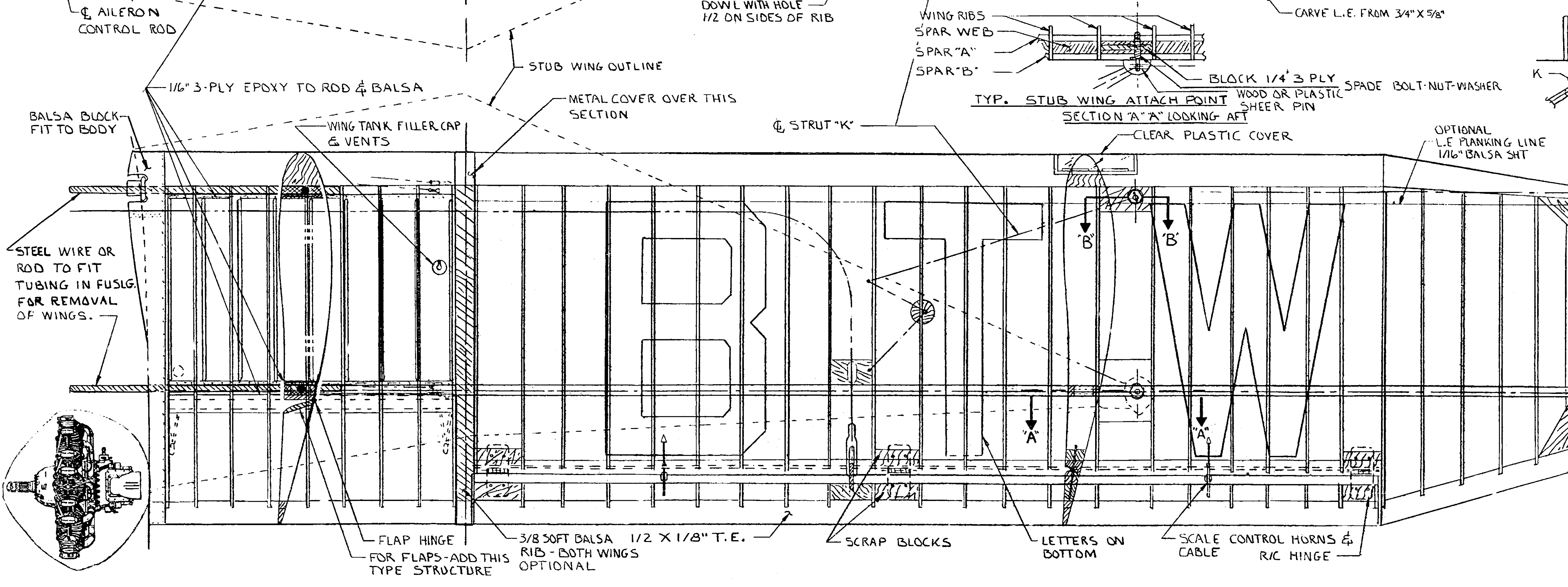
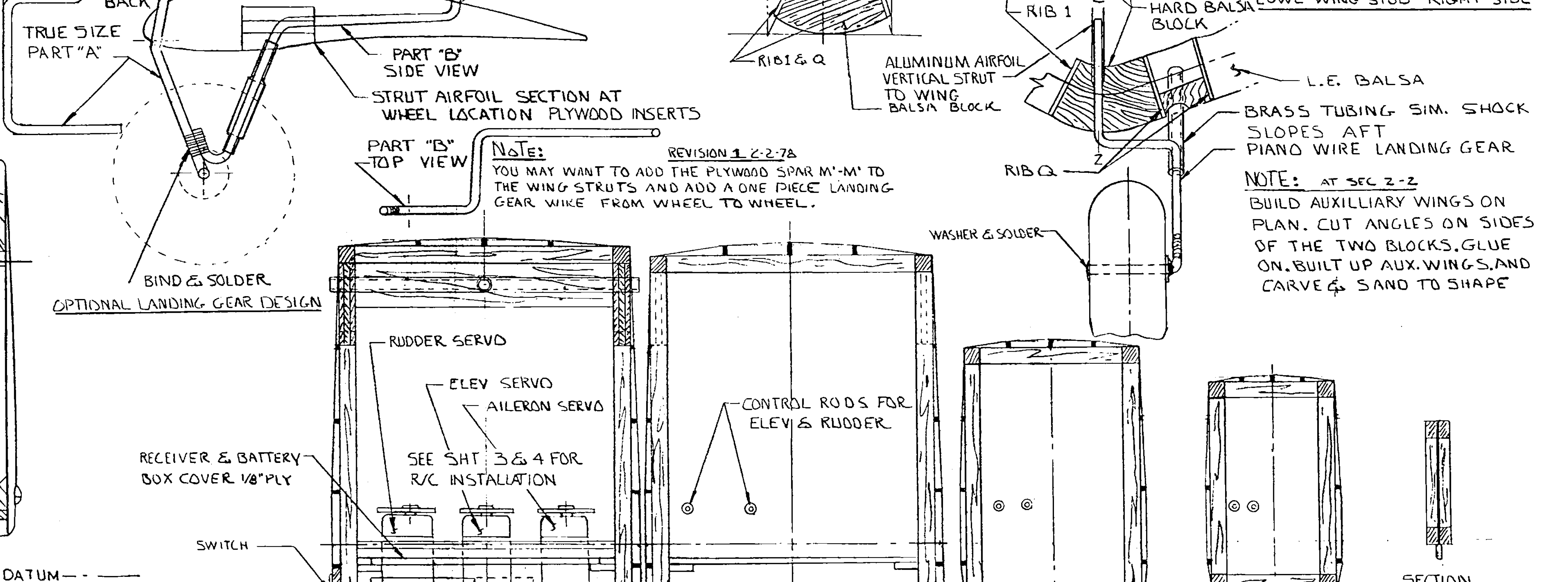
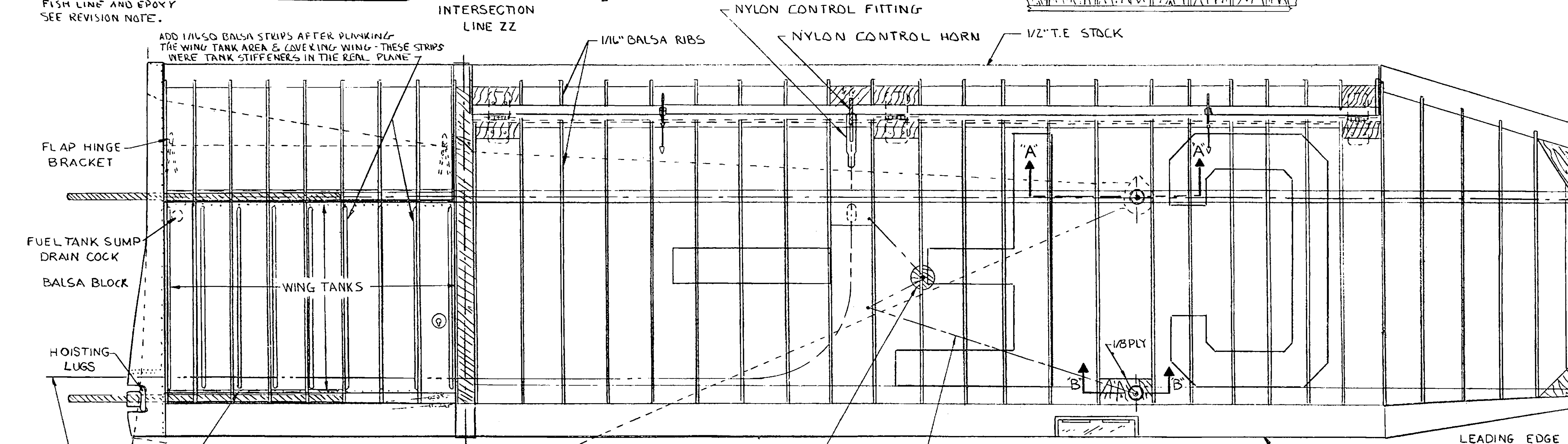
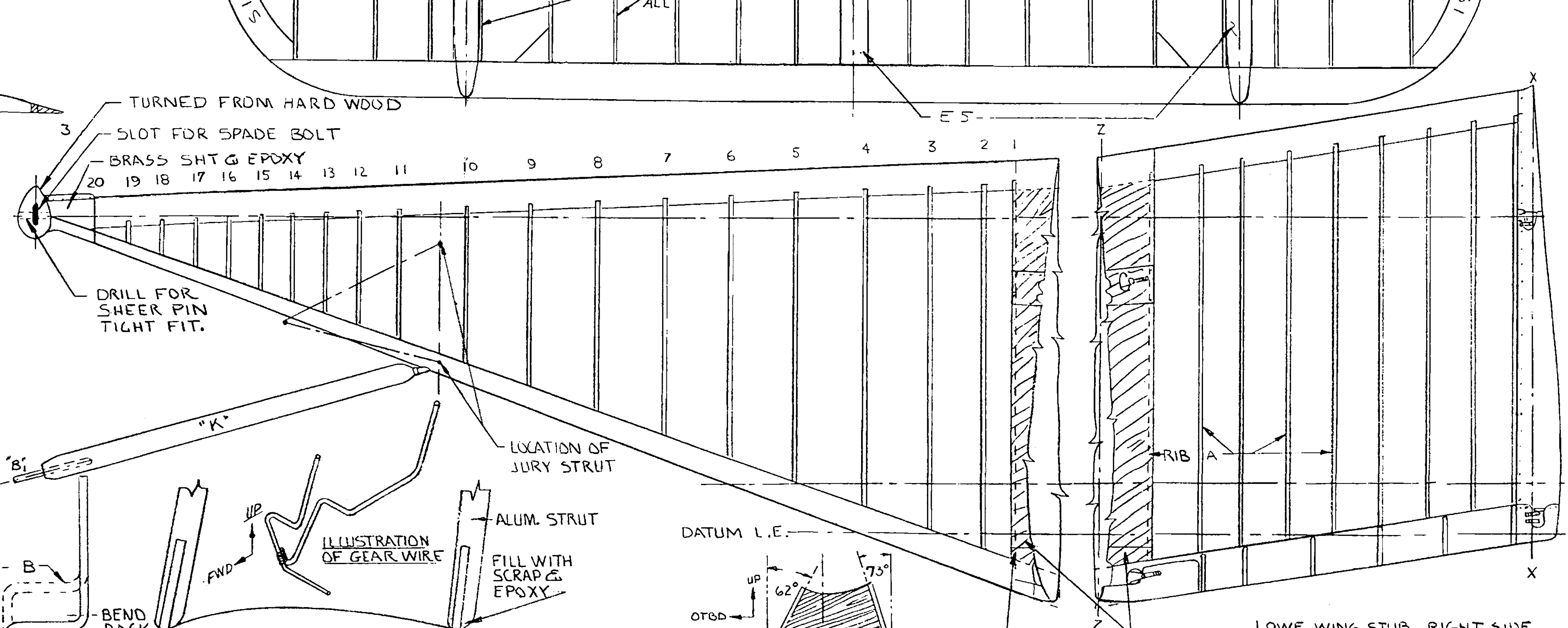
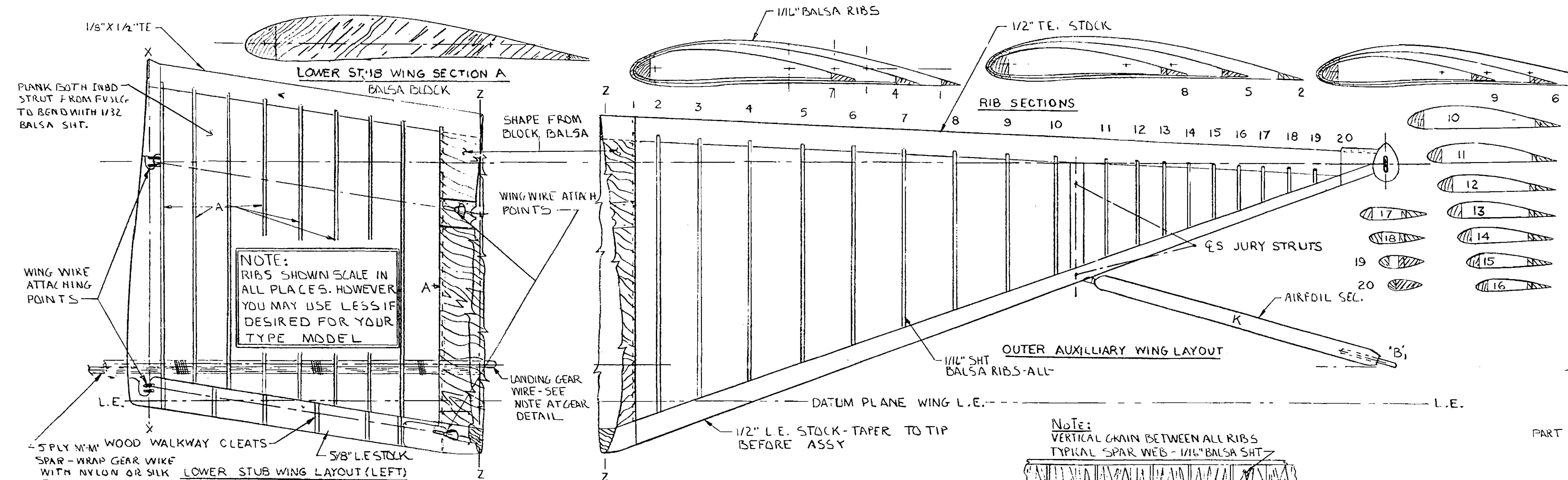
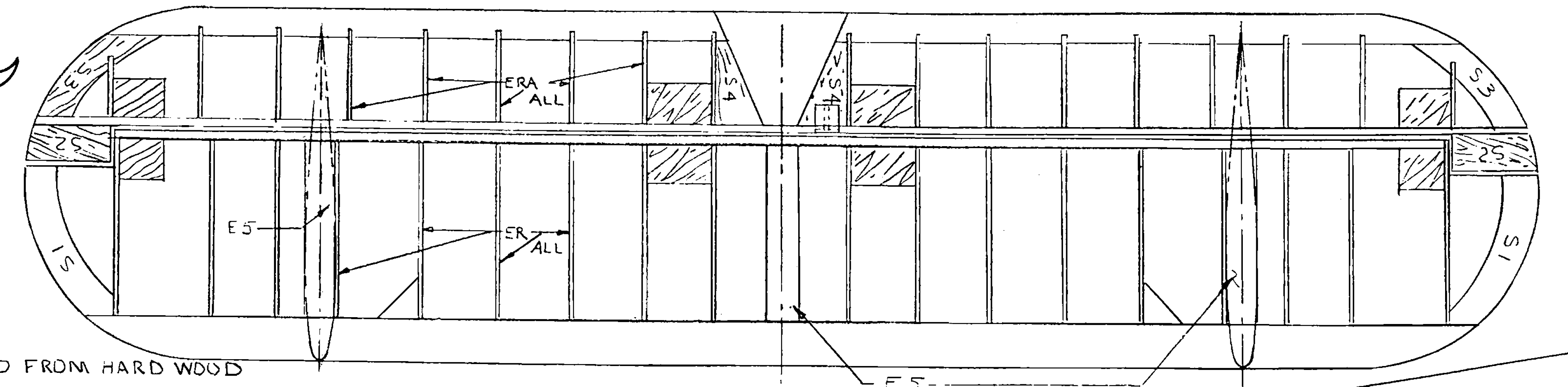
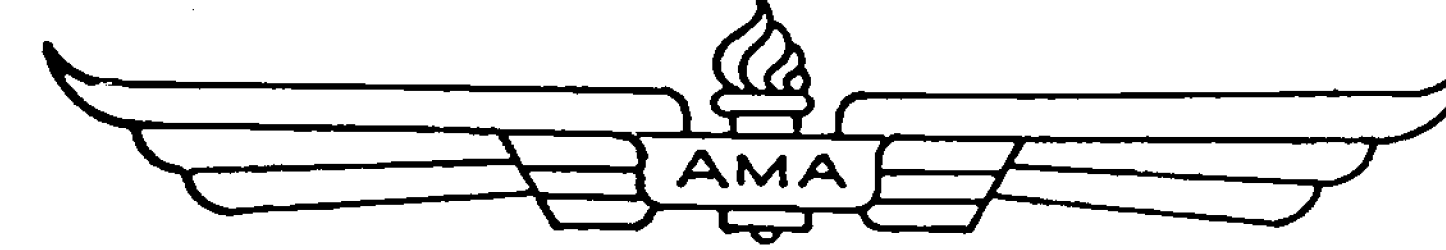
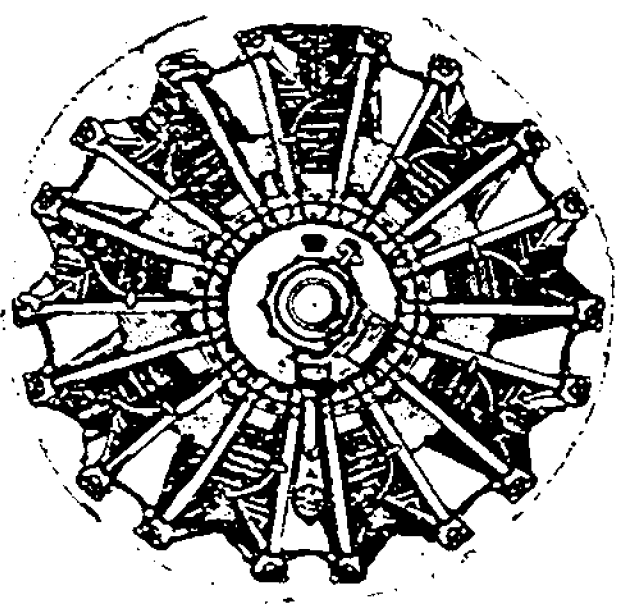
DESIGN & DRAWING F.E. PIERCE 1-15-77
 REVISED 2-2-78

COLOR SCHEME
 ALUMINUM (DOP & SILVER LACQUER) - ENTIRE AIRCRAFT
 BRANGE - WING TIPS - TAPERED PORTION
 BLUE - DARK NAVY REG. & COMPANY NAME
 BLACK - WING L.E. STRIPE
 NATURAL METAL - SHEET COVER STRIP - FUSELAGE
 LONGERON CHANNEL, PORT HOLES & COWLINGS

NOTE:
 WHEN CUTTING OUT PARTS THAT MORE THAN ONE IS REQUIRED THE MATL WITH DOUBLE BACK TAPE & CUT.

TO USE PATTERNE PATTERNE
 Cut through top layer approximately 1/16" inside line.
 Remove part from sheet.
 Stick on upper thickness of material (balsa, metal, or plywood) to both sides of material and glue.
 Cut to outside line of part and sand as line.
 Part.

EDD 42-12700 SHOWN



NOTE: RIBS SHOWN SCALE IN ALL PLACES. HOWEVER YOU MAY USE LESS IF DESIRED FOR YOUR TYPE MODEL

NOTE: VERTICAL CHAIN BETWEEN ALL RIBS TYPICAL SPAR WEB - 1/16" Balsa SHT

NOTE: YOU MAY WANT TO ADD THE PLYWOOD SPAR M-M TO THE WING STRUTS AND ADD A ONE PIECE LANDING GEAR WIRE FROM WHEEL TO WHEEL.

NOTE: AT SEC 2-2 BUILD AUXILIARY WINGS ON PLAN. CUT ANGLES ON SIDES OF THE TWO BLOCKS. GLUE ON. BUILT UP AUX. WINGS, AND CARVE & SAND TO SHAPE