



www.flitetest.com



FT Legacy

Designed By: Josh Bixler
Drawing By: Dan Sponholz
Version: 1.1
Date: 2018.11.20

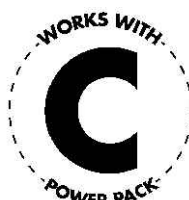
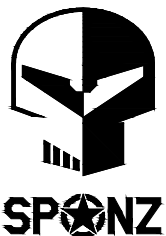


GENERAL SPECIFICATIONS:

| | | | |
|----------------|---|--|----------------------|
| LENGTH: | 39.50 in | | 1003 mm |
| CG: | 2.50 in | | 64 mm |
| WINGSPAN: | 56.50 in | | 1435 mm |
| WING AREA: | 497.1 in ² | | 32.1 dm ² |
| DRY WEIGHT: | 39.2 oz. | | 1111 g |
| ALL UP WEIGHT: | 52.0 oz. | | 1475 g |
| WING LOADING: | 15.1 oz/ft ² | | 46 g/dm ² |
| WCL: | 8.1 | | |
| THROWS: | 12° - 16° | | |
| EXPO: | 30% | | |
| CHANNELS: | 3-6 [THR RUD ELE AIL FLAPS ACC] | | |

RECOMMENDED ELECTRONICS:

| | |
|------------|---------------------------|
| MOTOR: | Park 425 1000 kv min. |
| PROPELLER: | 9x4.5 (4S) to 10x4.5 (3S) |
| ESC: | 30 amp min. |
| SERVOS: | (2-7) 9 gram |
| BATTERY: | 2200-3300 mAh 3S-4S |



BUILD SKILL LEVEL:

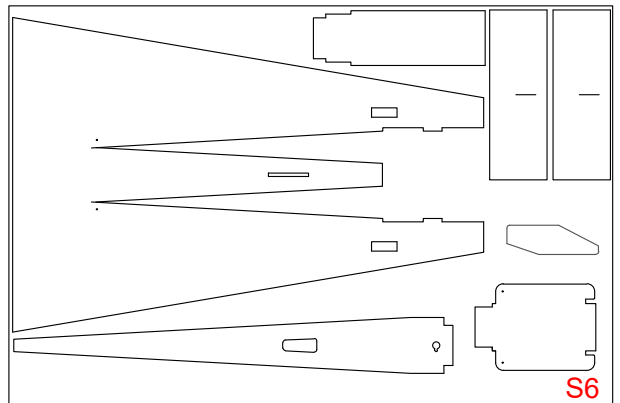
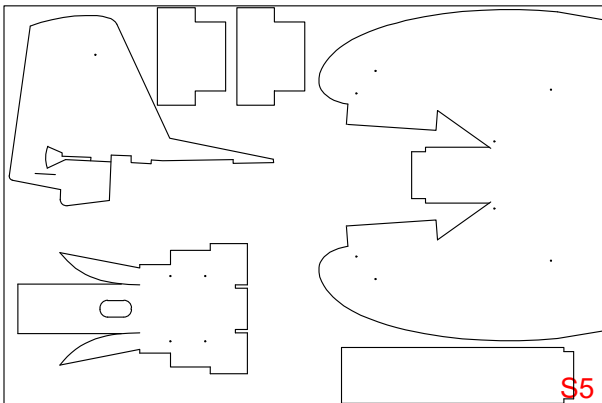
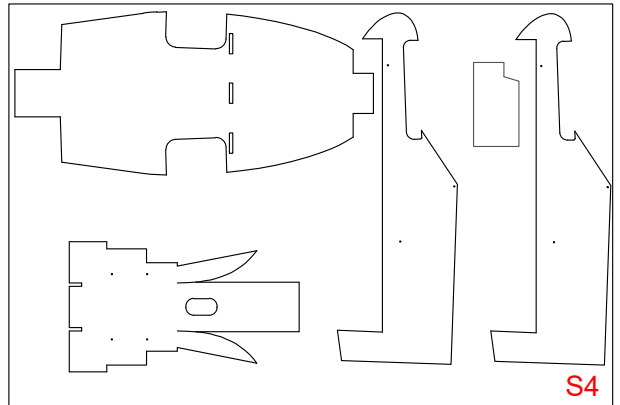
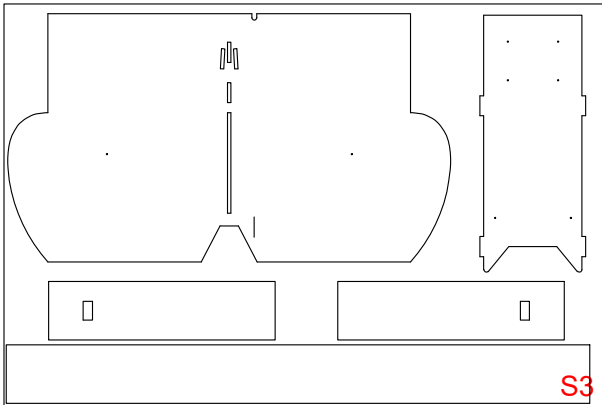
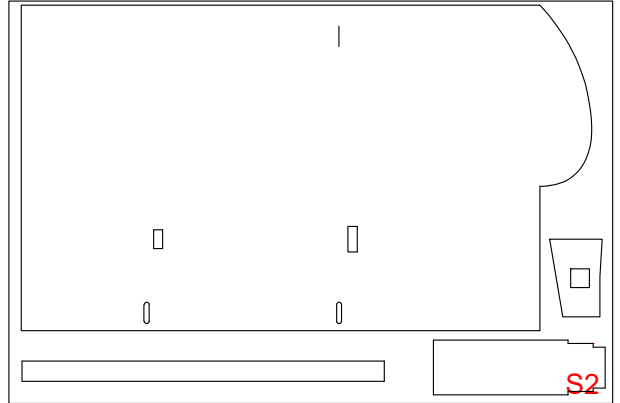
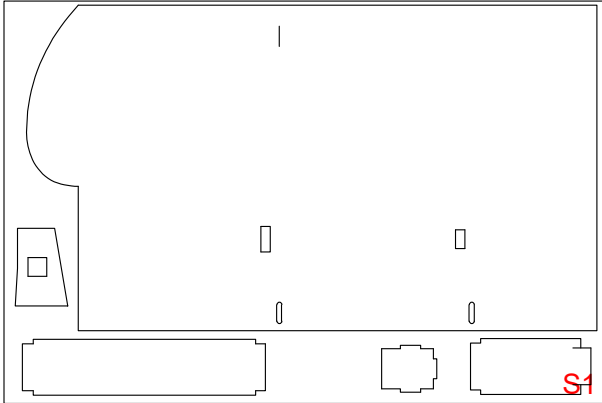


PILOT SKILL LEVEL:



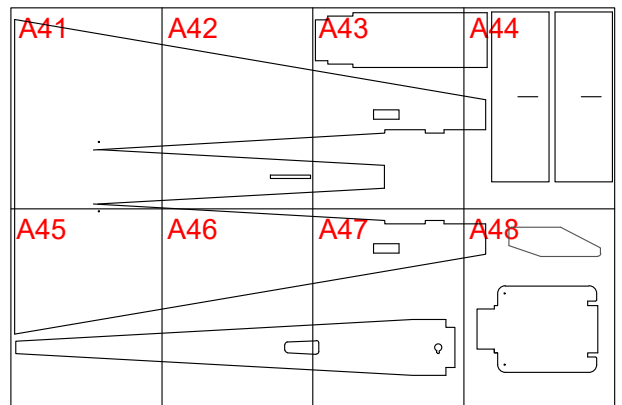
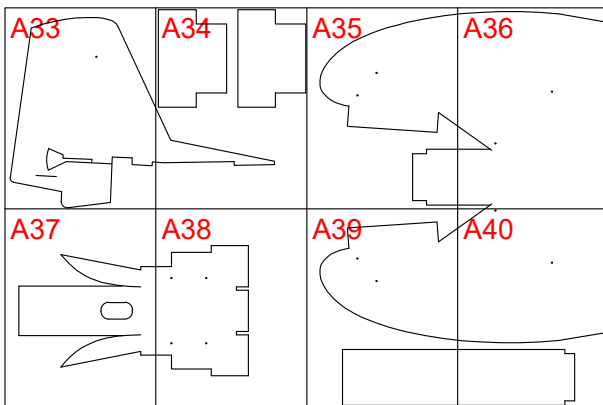
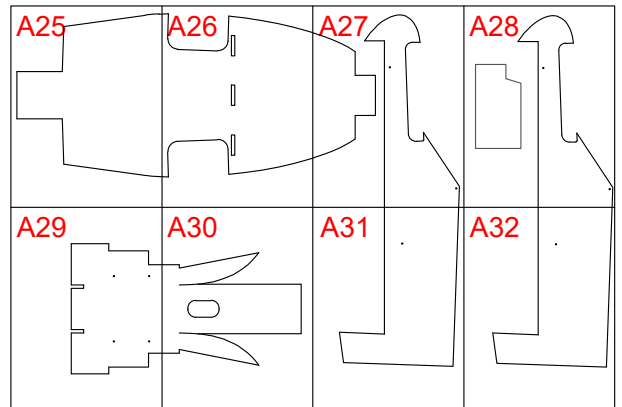
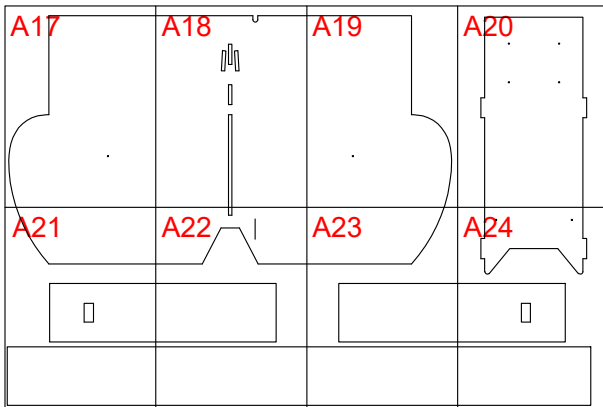
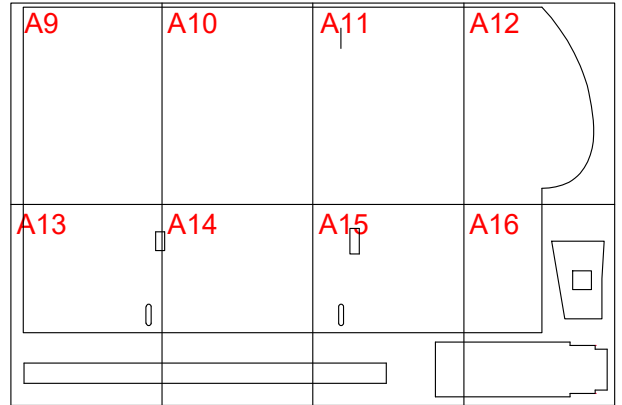
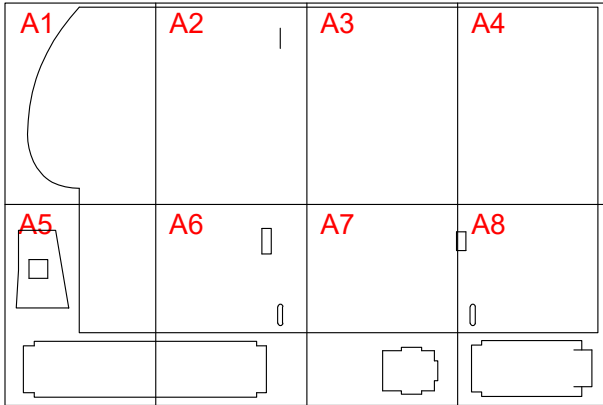


FT Legacy: Full-Size Key



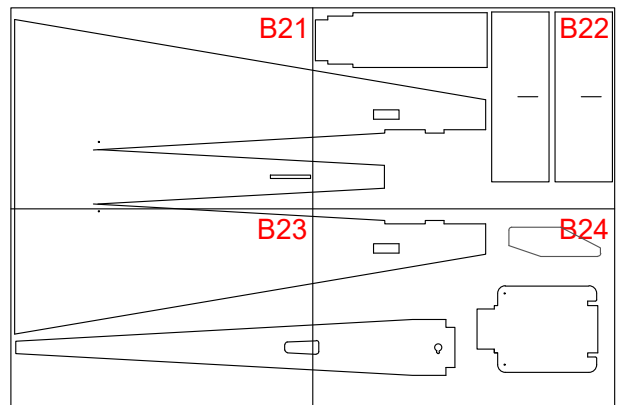
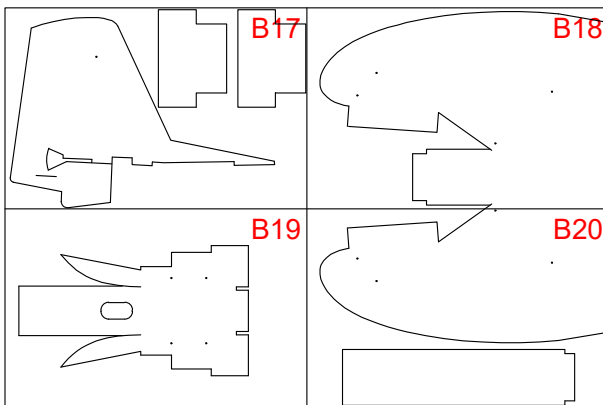
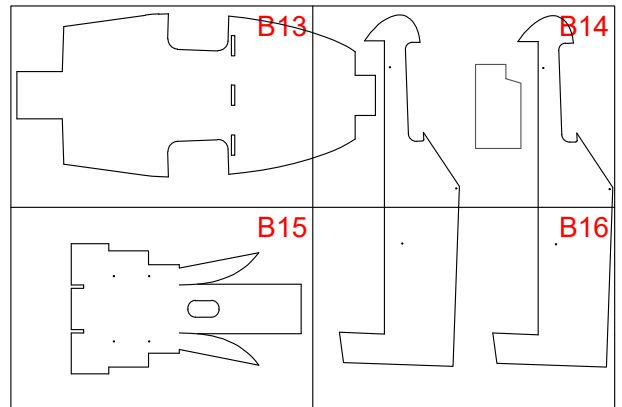
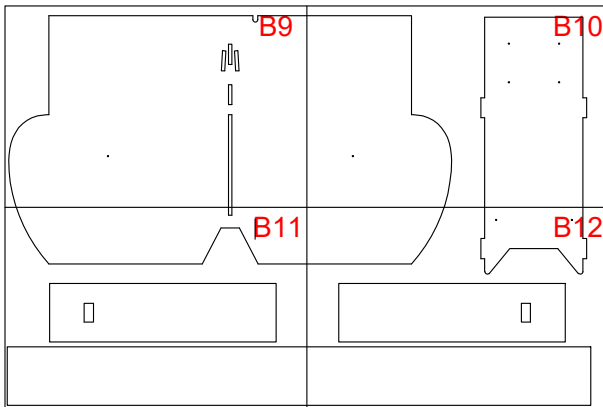
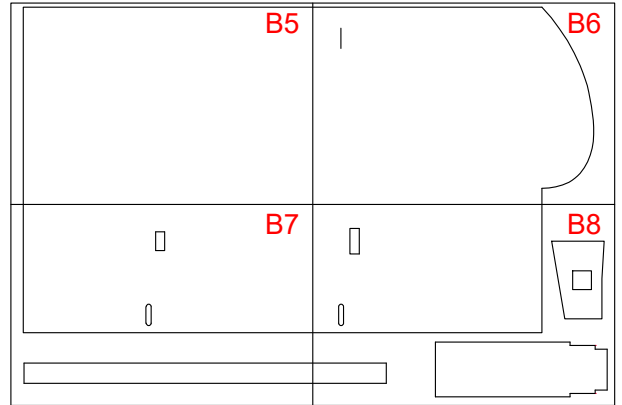
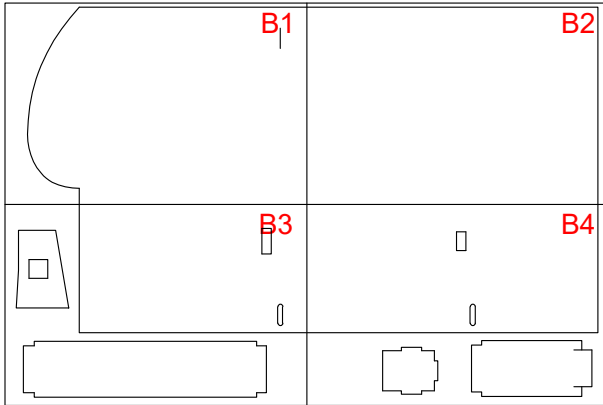


FT Legacy: Tile A Key





FT Legacy: Tile B Key

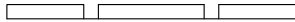
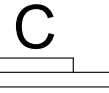
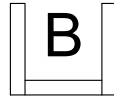
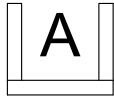




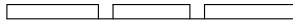
Drawing Key



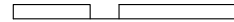
FOLD TYPES



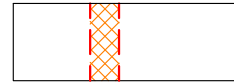
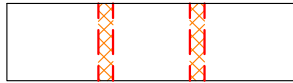
A - FOLD (ABOVE)



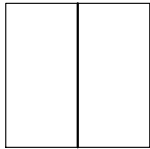
B - FOLD (BESIDE)



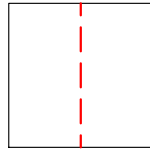
C - FOLD (COVER)



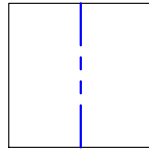
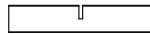
LINE TYPE/COLOR



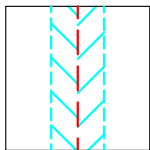
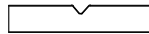
CUT



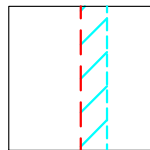
50% SCORE



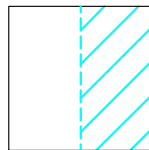
CREASE



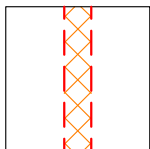
45° DOUBLE BEVEL



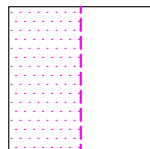
45° SINGLE BEVEL



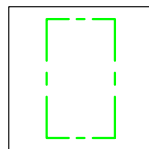
EDGE BEVEL



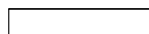
CAVITY



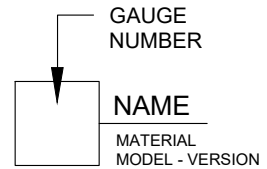
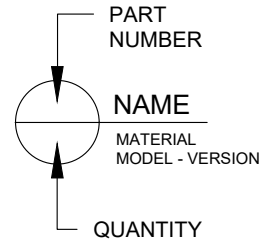
REMOVE PAPER



REFERENCE/
OPTIONAL



SYMBOLS



CENTER OF GRAVITY (CG)

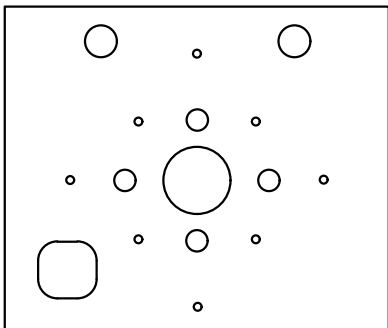
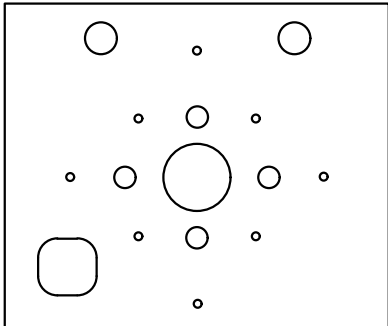
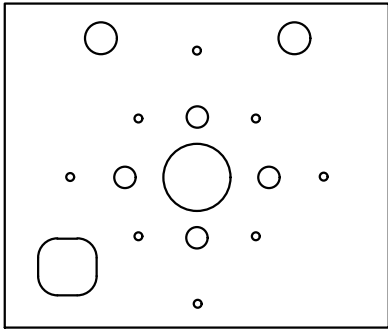


FT Legacy: Wood Parts

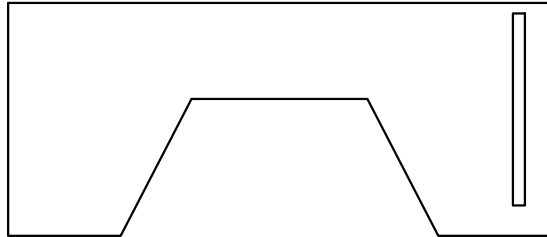


HOBBY GRADE PLYWOOD
3/32" (2.4 mm) THICK

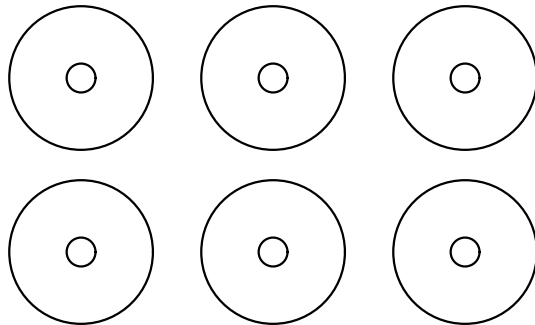
FT STANDARD FIREWALL



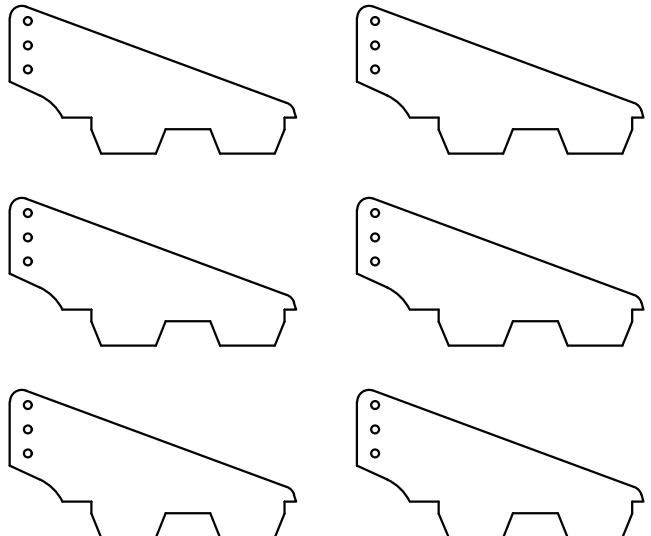
ELEVATOR SUPPORT



FT REINFORCEMENT DISCS



FT STANDARD CONTROL HORN



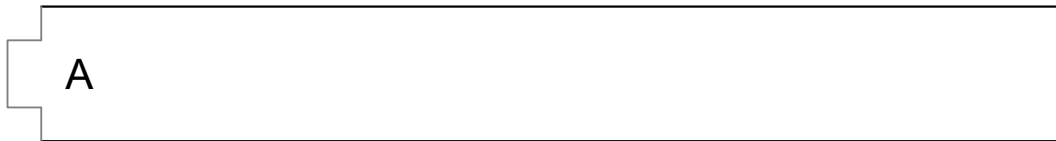
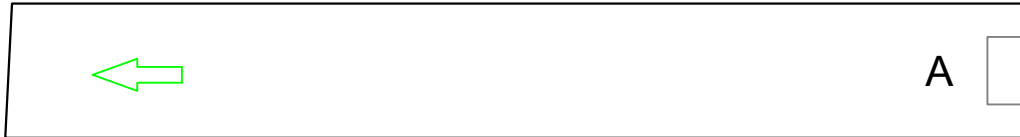


FT Legacy: Wood Parts



HOBBY GRADE PLYWOOD
3/32" (2.4 mm) THICK

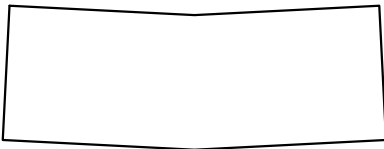
WOOD SPAR A



WOOD SPAR B



WOOD SPAR JOINER

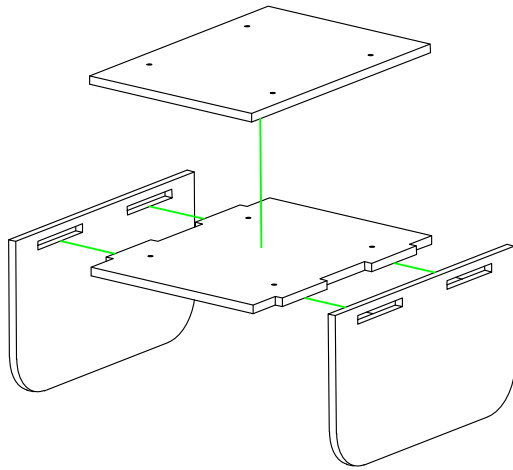




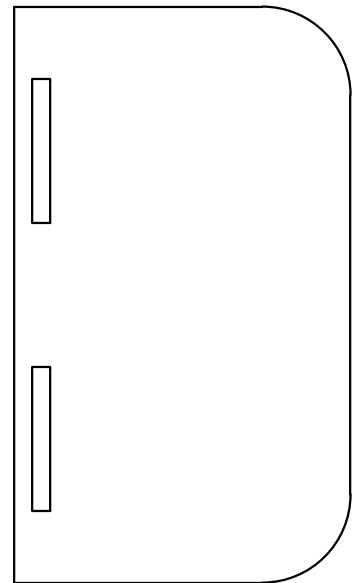
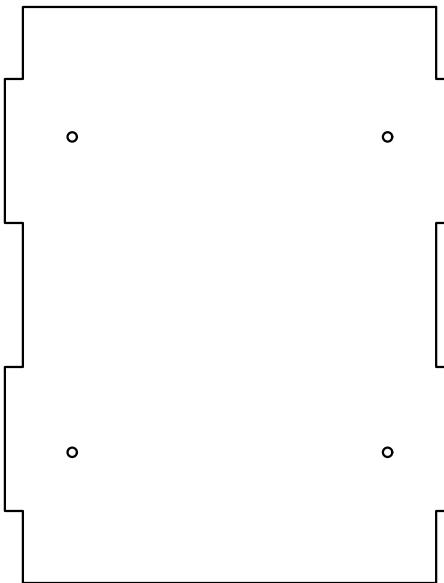
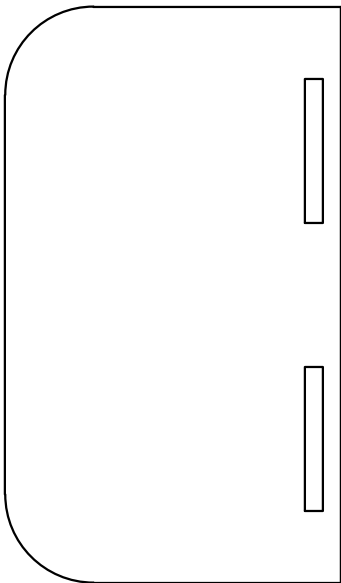
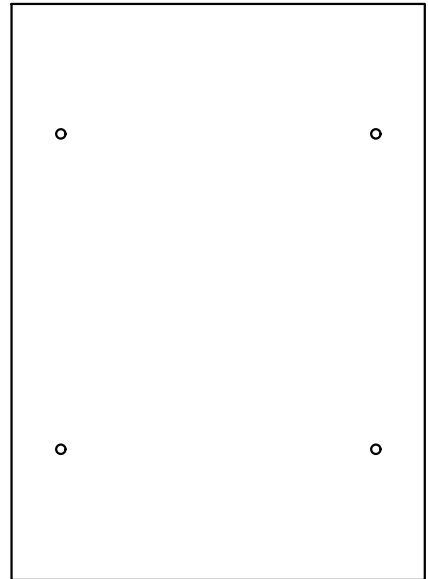
FT Legacy: Wood Parts



LANDING GEAR MOUNT
HOBBY GRADE PLYWOOD
3/32" (2.4 mm) THICK



GLUE ASSEMBLY TOGETHER
USING CA OR INSTANT GLUE





FT Legacy: VINYL WINDOWS



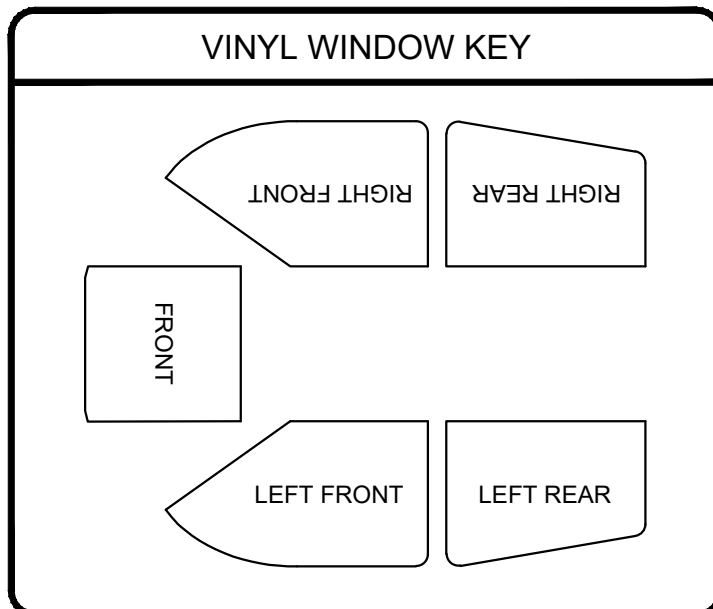
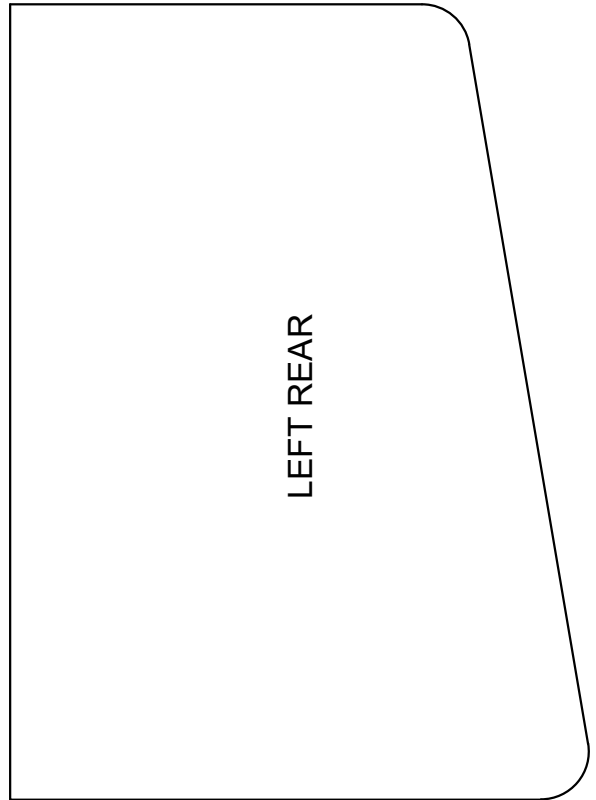
RIGHT FRONT

LEFT FRONT

FRONT

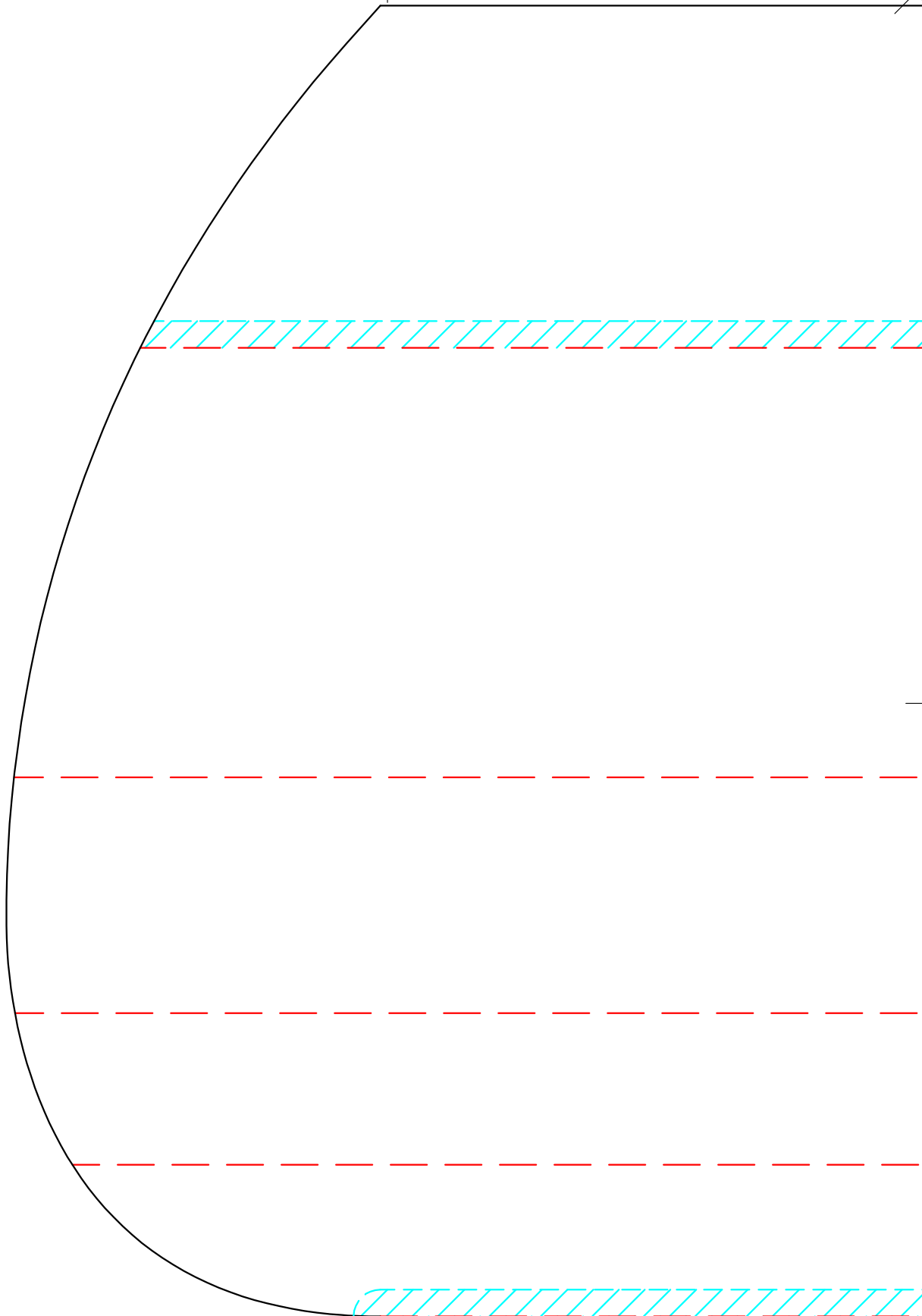


FT Legacy: VINYL WINDOWS



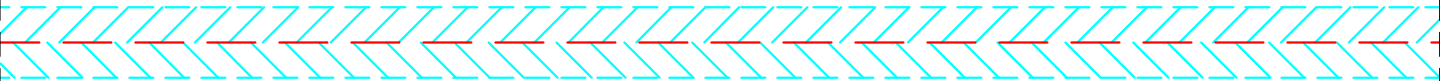


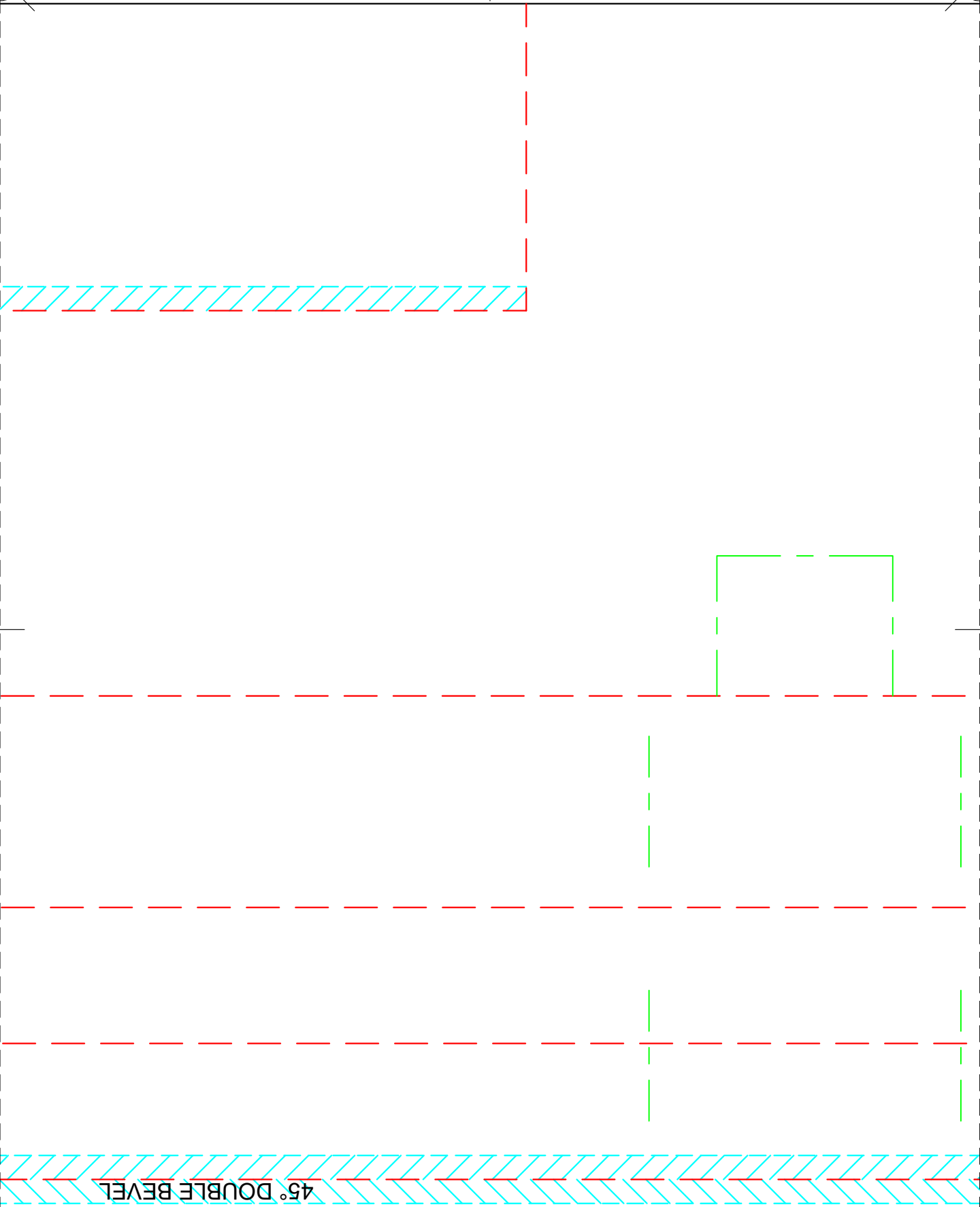
IN
CM





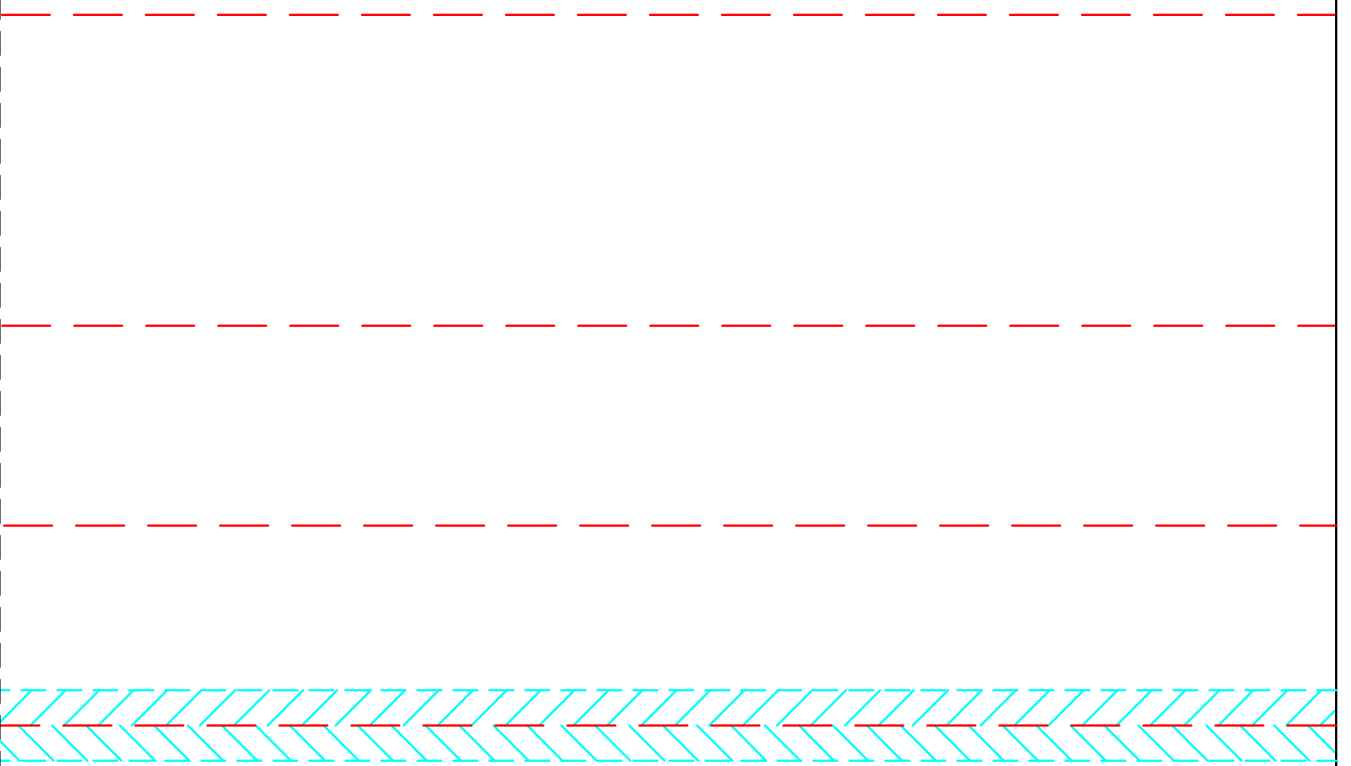
45° SINGLE BEVEL

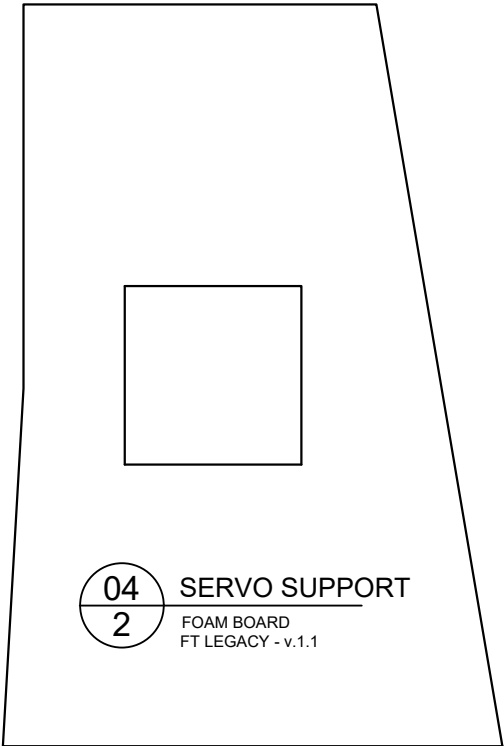






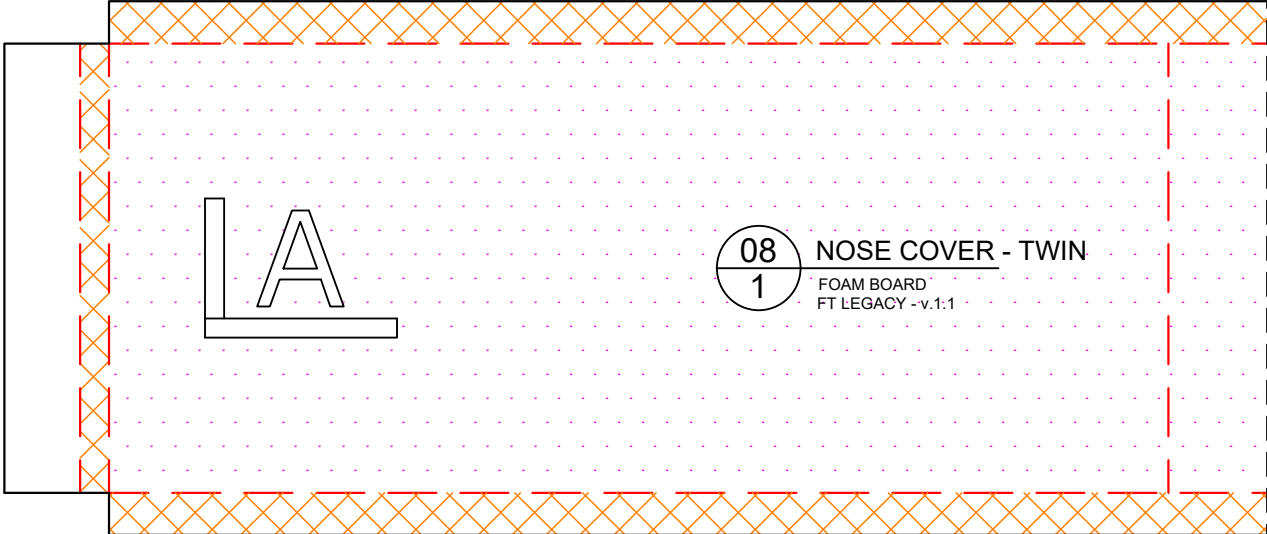
IN
CM





04
2

SERVO SUPPORT
FOAM BOARD
FT LEGACY - v.1.1

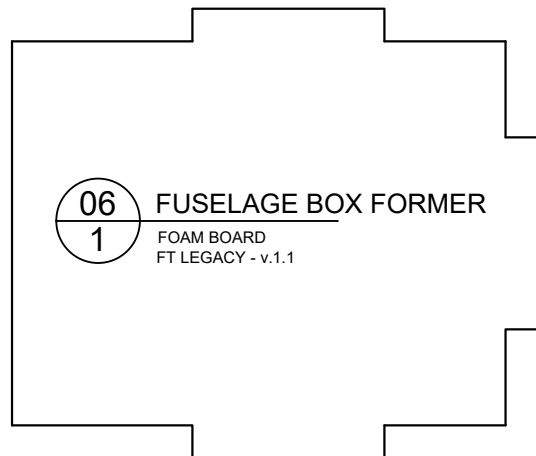
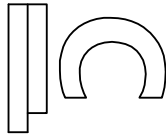


08
1

NOSE COVER - TWIN
FOAM BOARD
FT LEGACY - v.1.1



15 LEFT WING
1 FOAM BOARD
FT LEGACY - v.1.1



06 FUSELAGE BOX FORMER
1 FOAM BOARD
FT LEGACY - v.1.1





REMOVE AFTER
ASSEMBLY

REMOVE AFTER
ASSEMBLY



CUT OPEN AFTER ASSEMBLY
(OPTIONAL BOMB BAY DOOR)

10
1

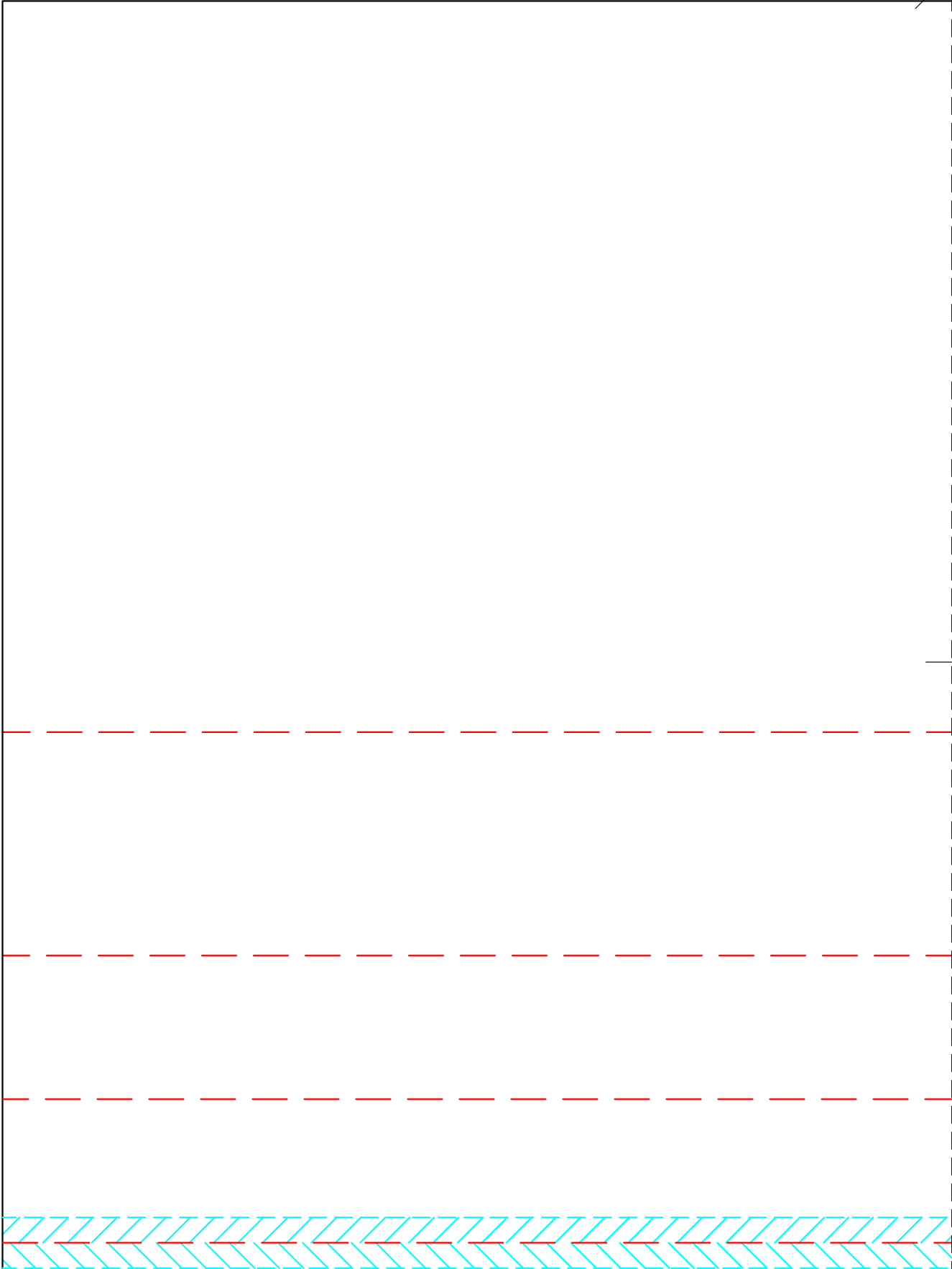
BOMB BAY DOOR

FOAM BOARD
FT LEGACY - v.1.1



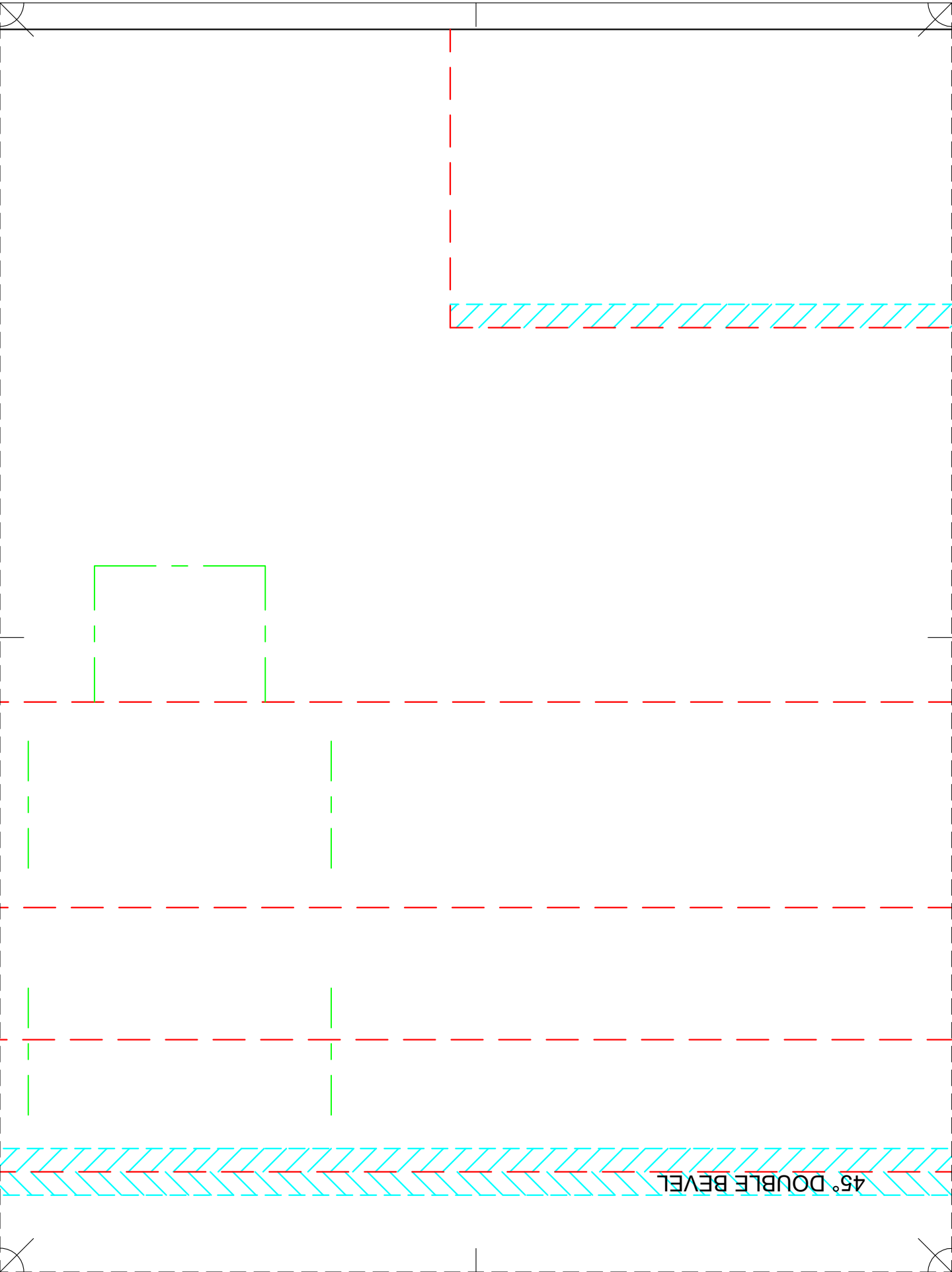


IN
CM





IN
CM





IN
CM

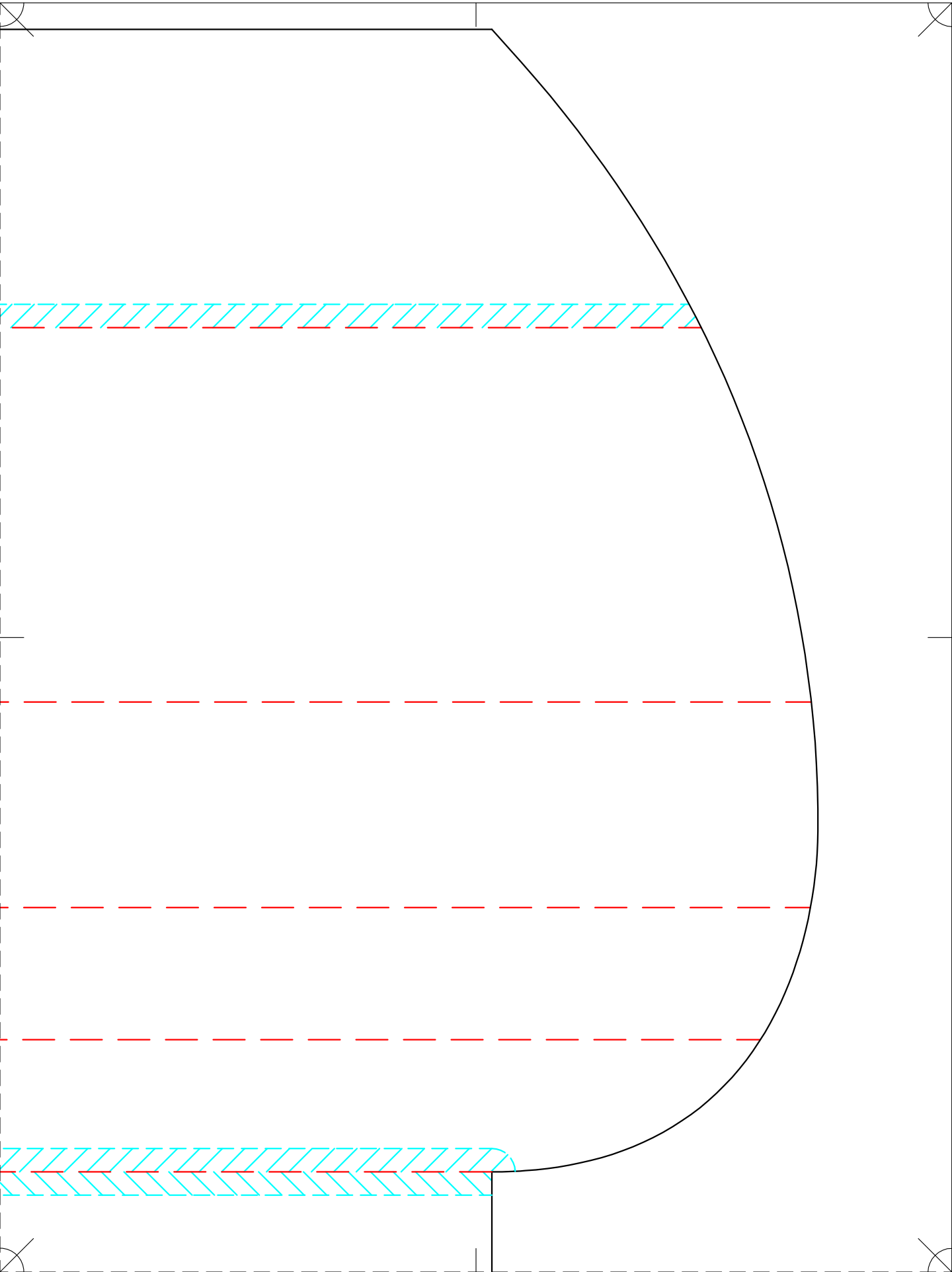


45° SINGLE BEVEL



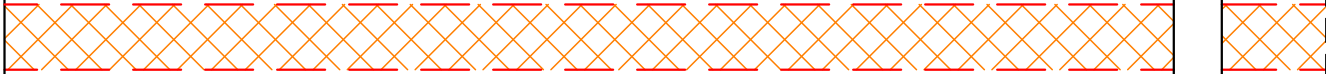


IN
CM

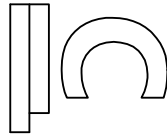


REMOVE AFTER
ASSEMBLY

REMOVE AFTER
ASSEMBLY

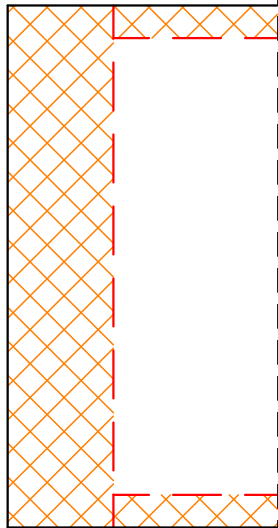
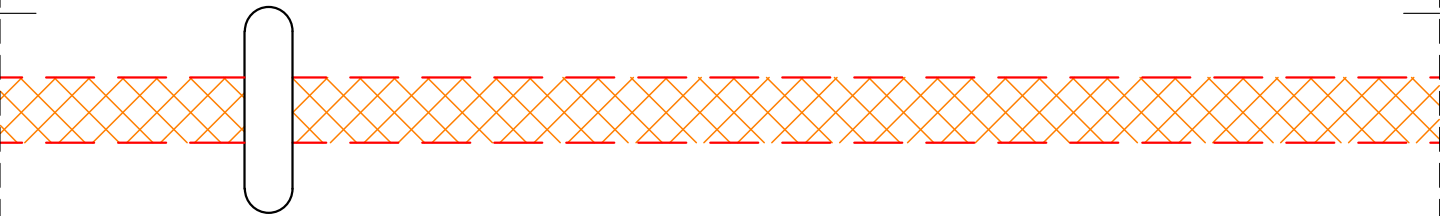
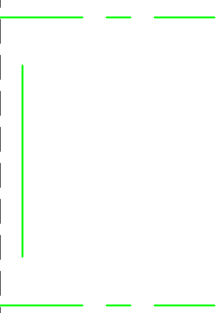


16 RIGHT WING
1 FOAM BOARD
FT LEGACY - v.1.1



13 HORIZONTAL STABILIZER SPAR
1 FOAM BOARD
FT LEGACY - v.1.1





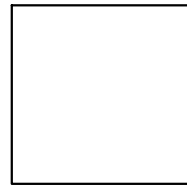
IN
CM



04
2

SERVO SUPPORT

FOAM BOARD
FT LEGACY - v.1.1



22
2

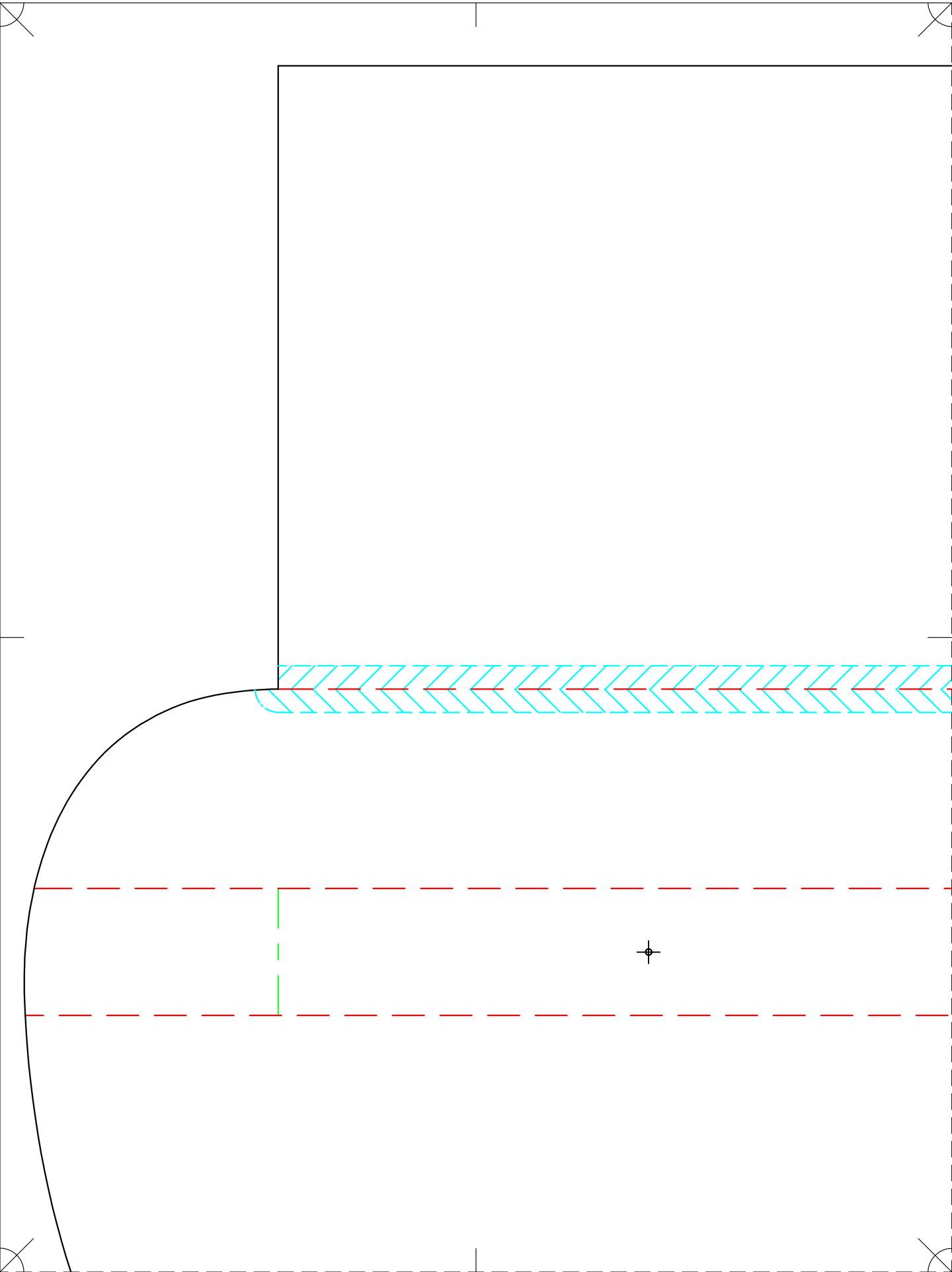
NACELLE BOTTOM PLATE

FOAM BOARD
FT LEGACY - v.1.1



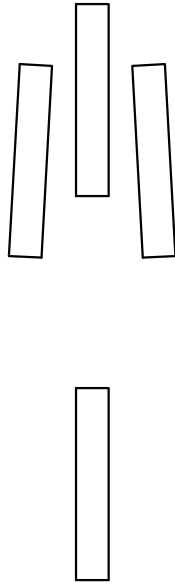


IN
CM





IN
CM



45° DOUBLE BEVEL

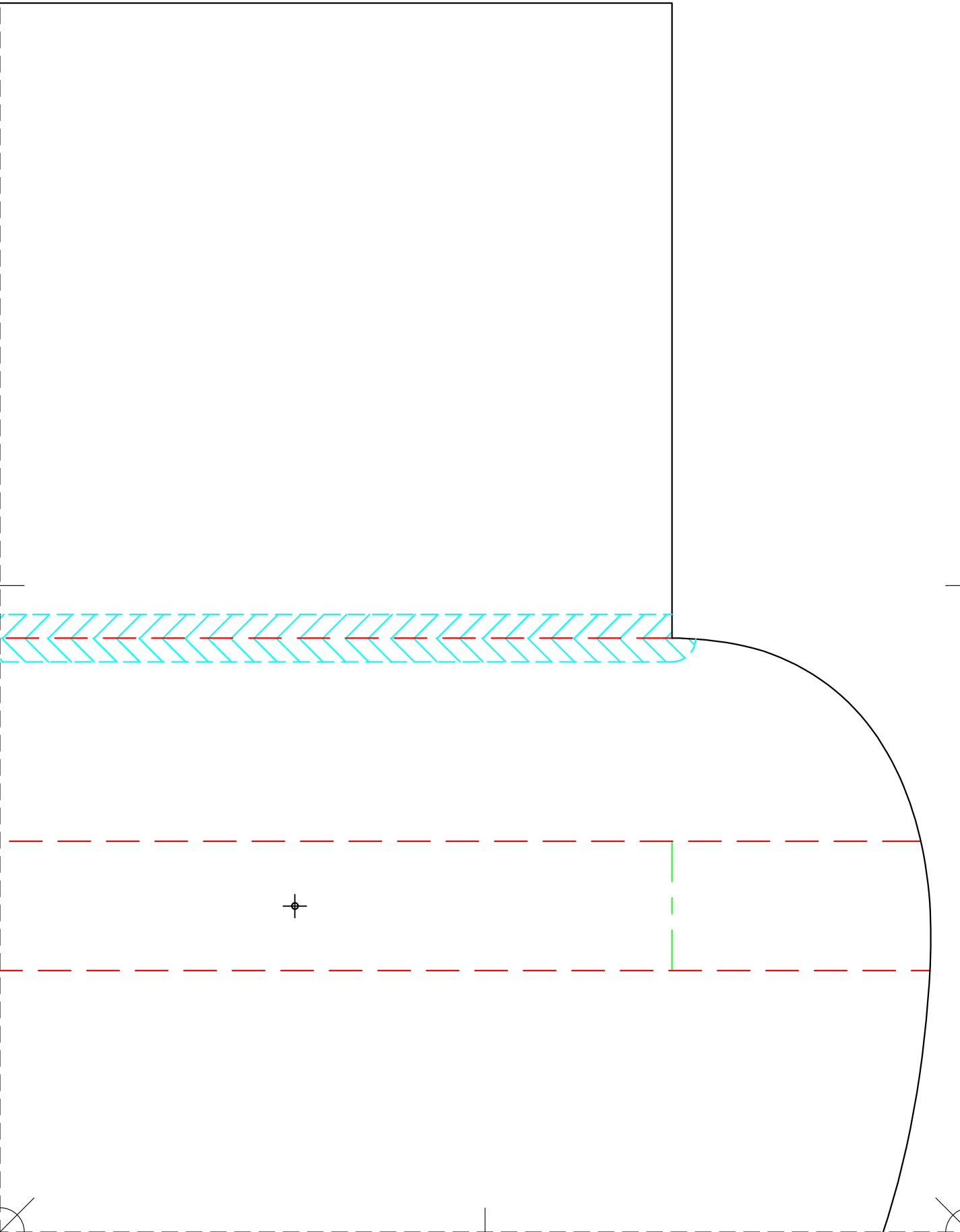
12
1

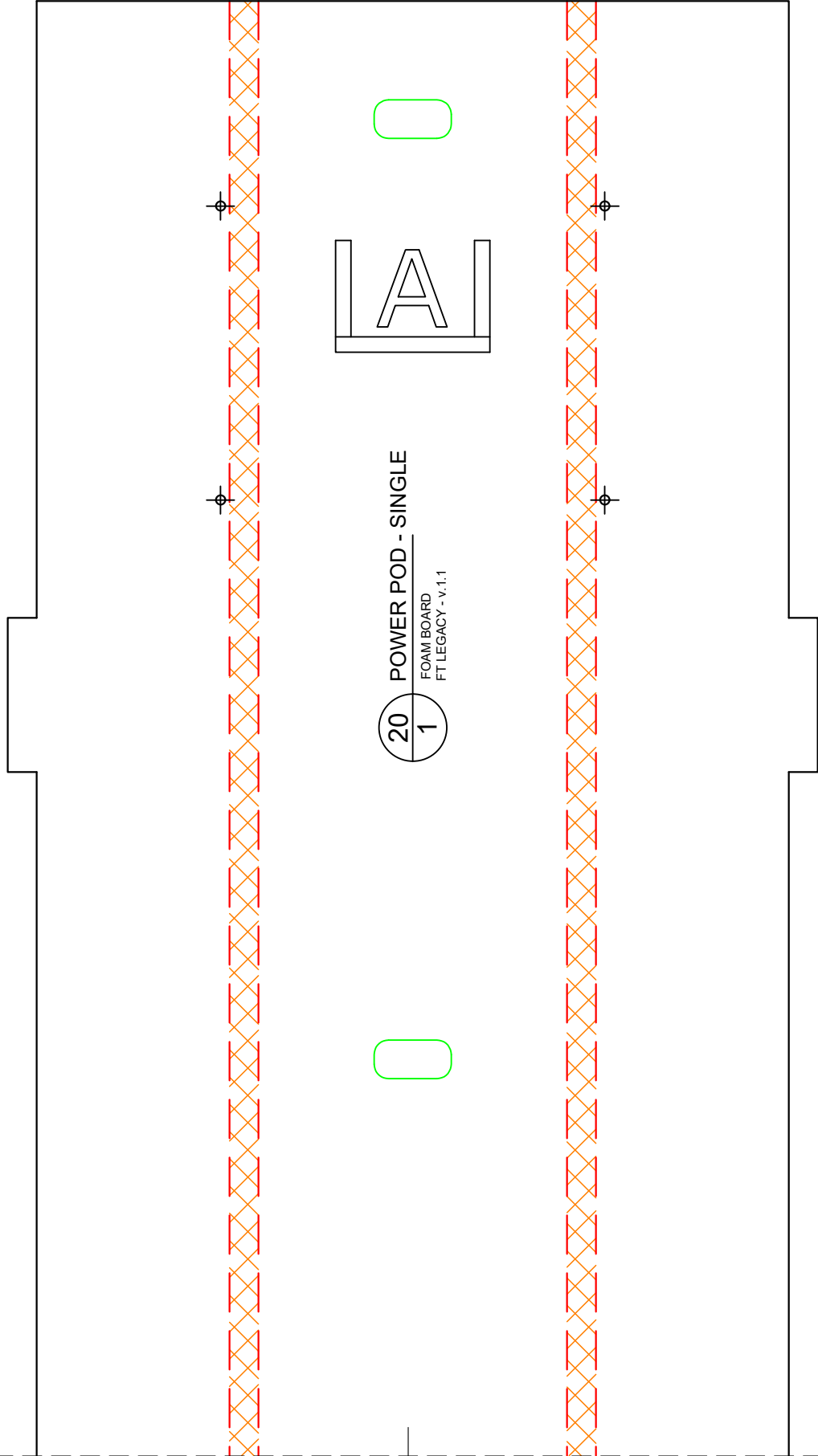
HORIZONTAL STABILIZER

FOAM BOARD
FT LEGACY - v.1.1



IN
CM





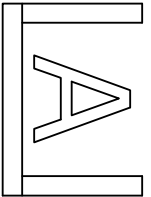
20
1
POWER POD - SINGLE
FOAM BOARD
FT LEGACY - v.1.1

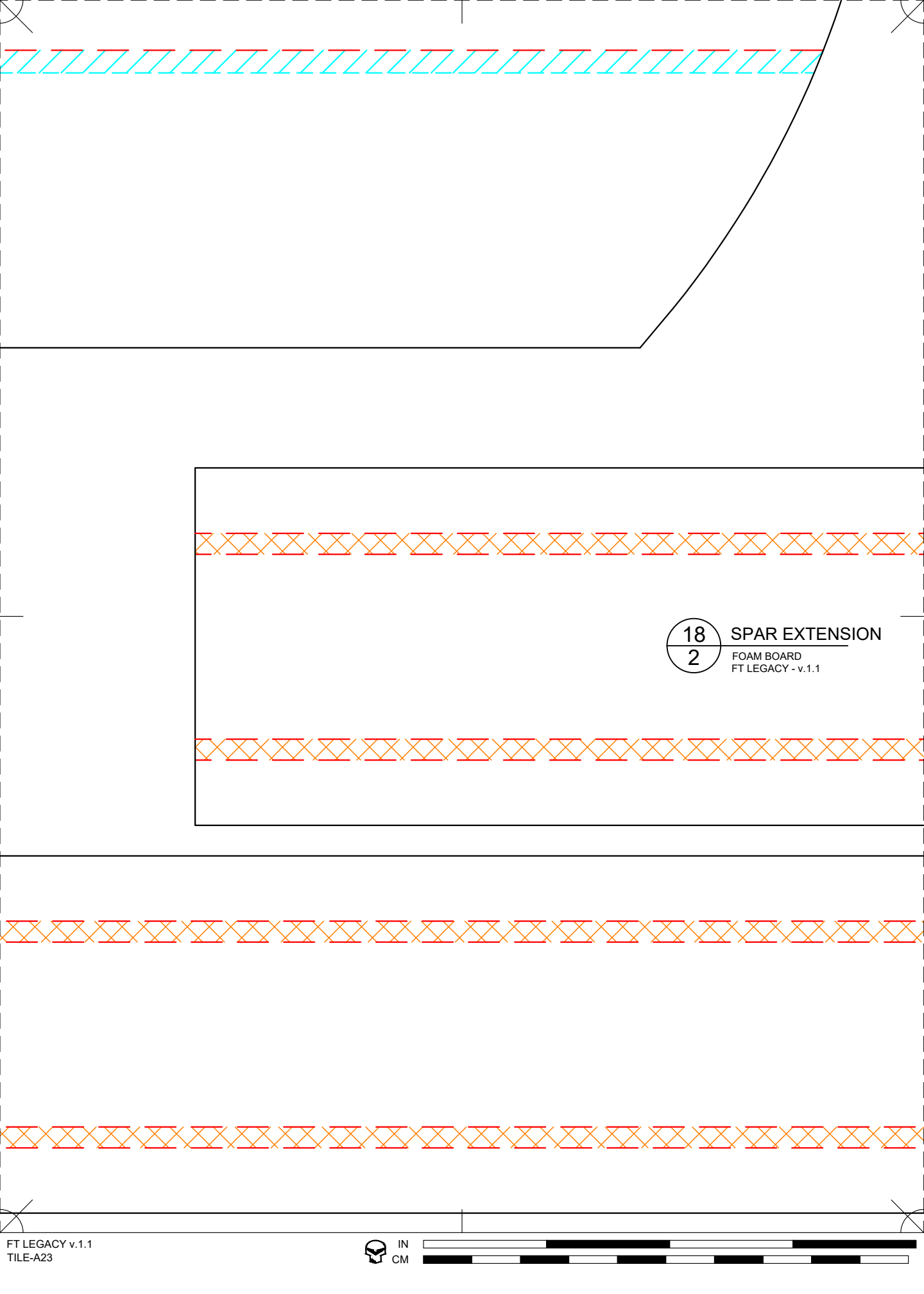


45° SINGLE BEVEL

18
2 SPAR EXTENSION
FOAM BOARD
FT LEGACY - v.1.1

17
1 MAIN SPAR
FOAM BOARD
FT LEGACY - v.1.1

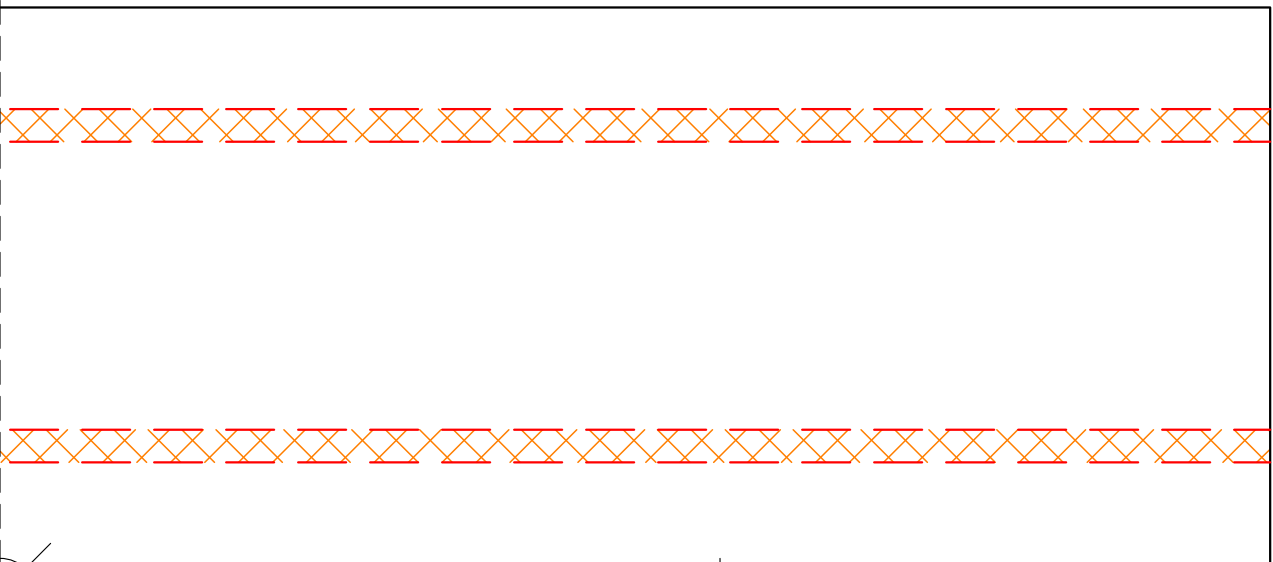
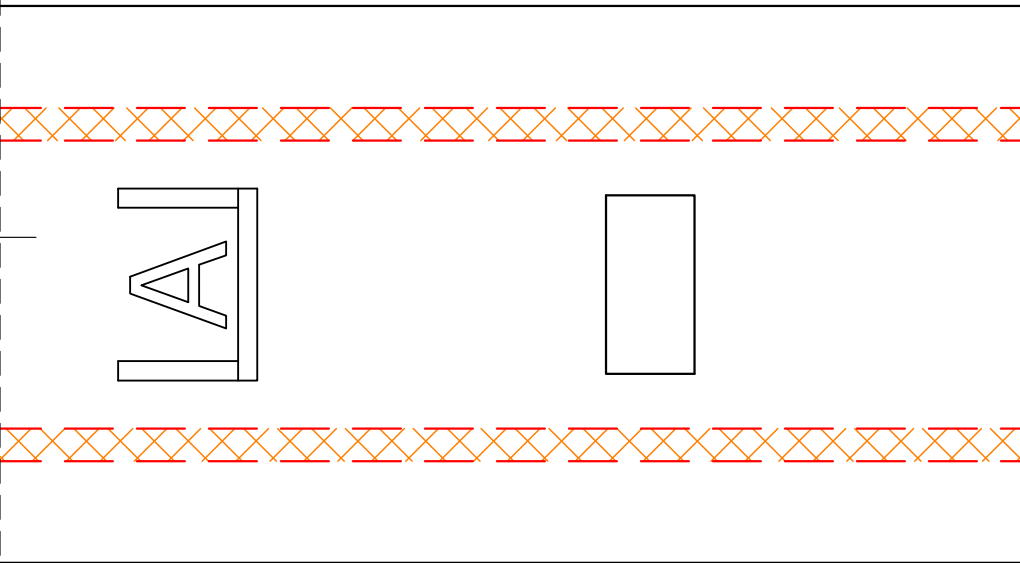
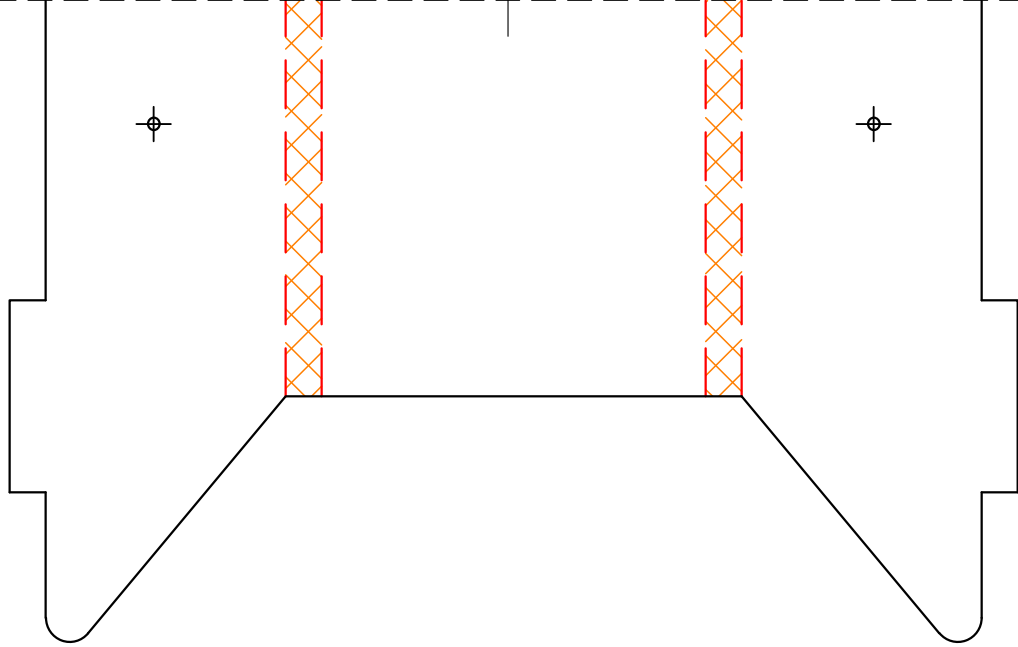




18
2

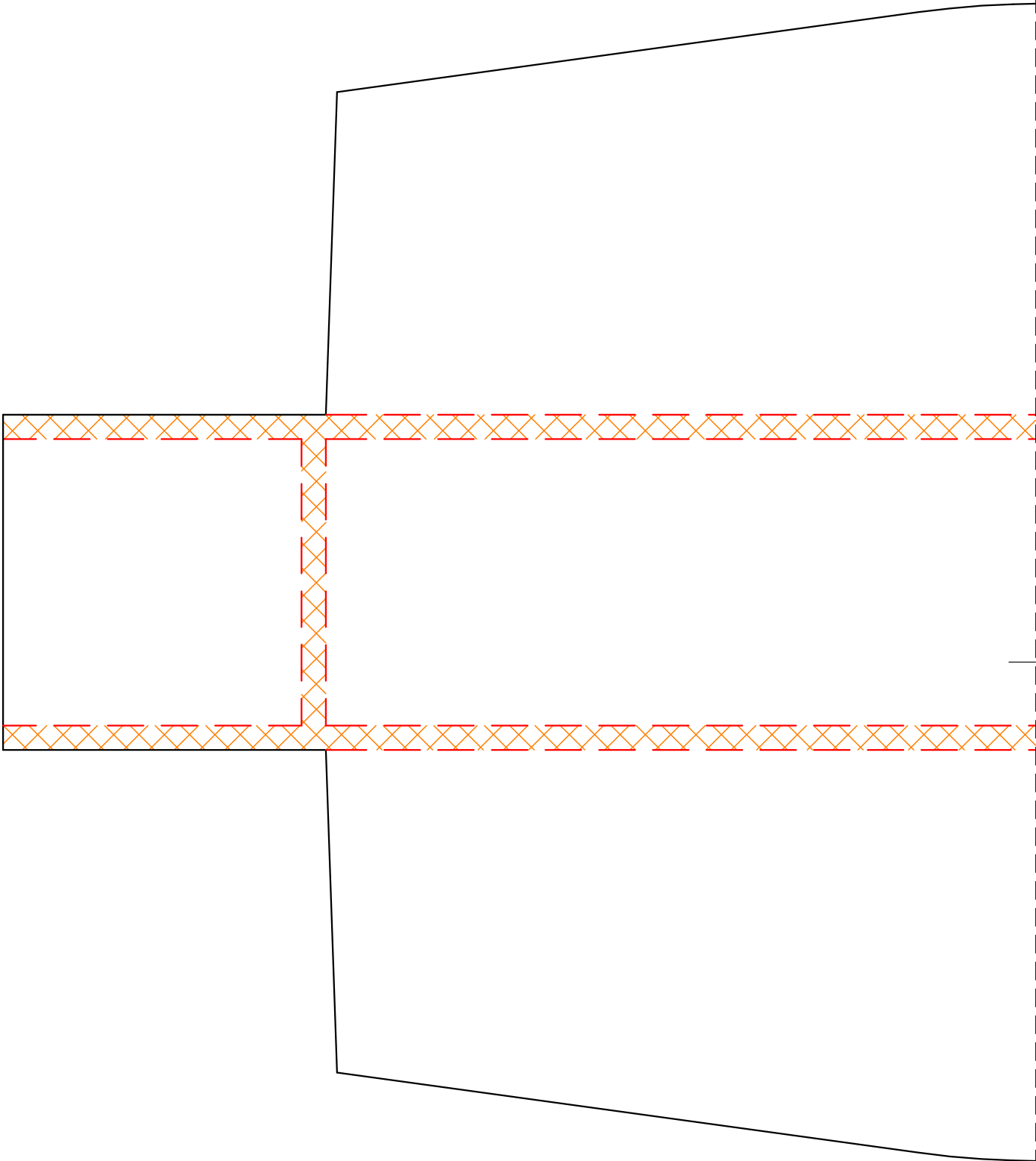
SPAR EXTENSION
FOAM BOARD
FT LEGACY - v.1.1

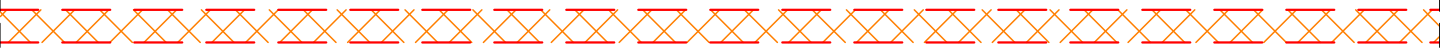
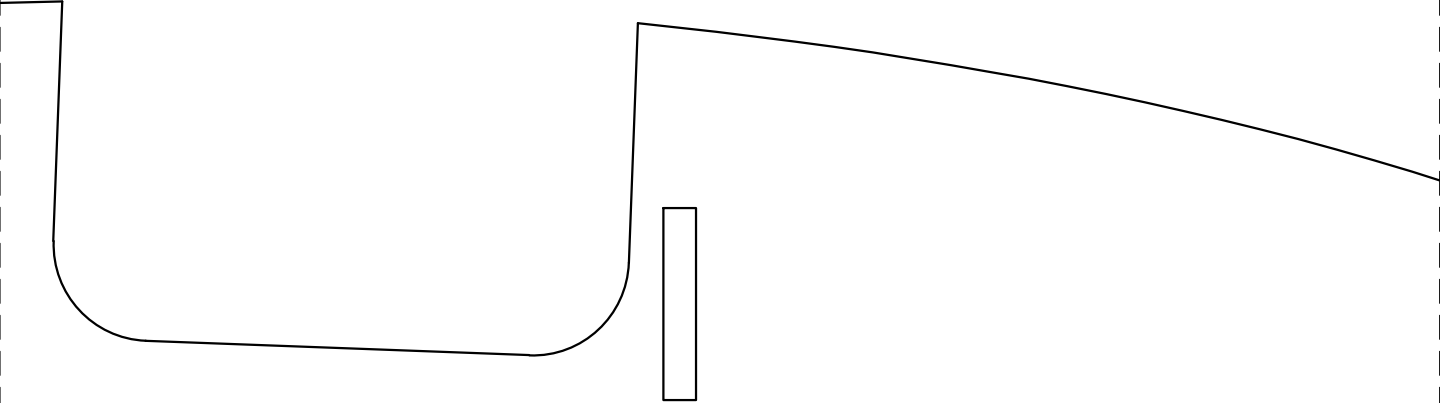






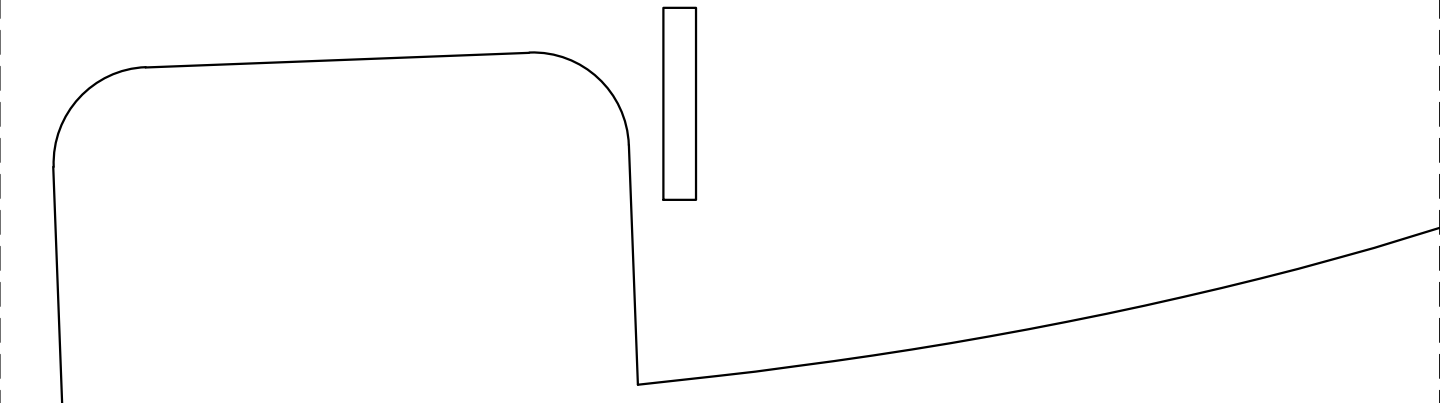
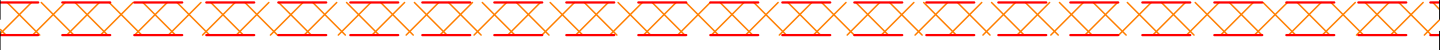
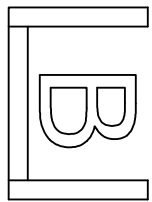
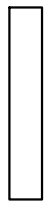
IN
CM





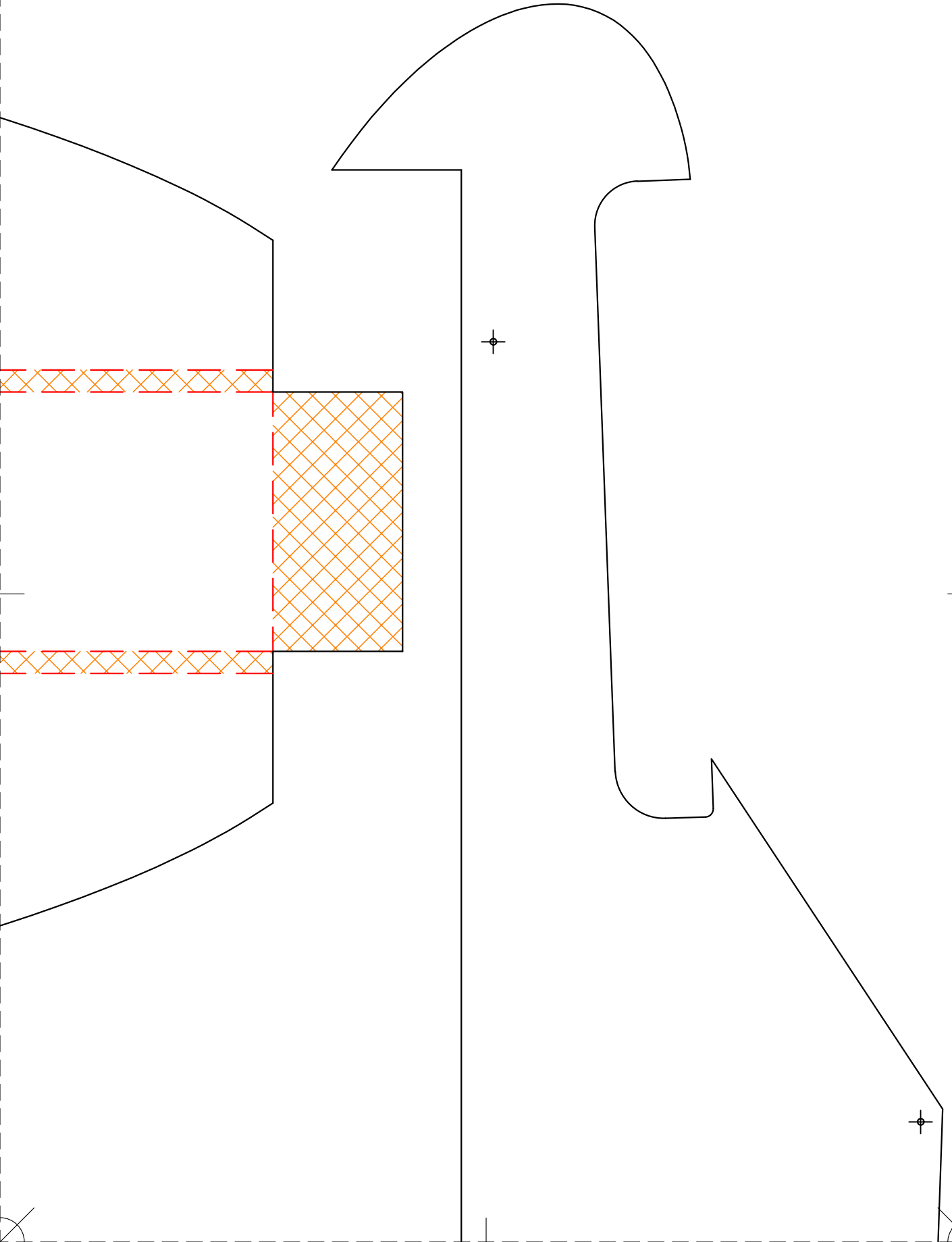
05
1

FUSELAGE BOX DOUBLER
FOAM BOARD
FT LEGACY - v.1.1



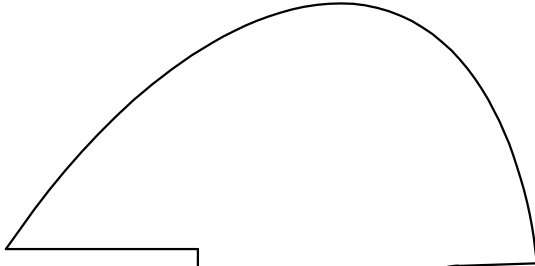
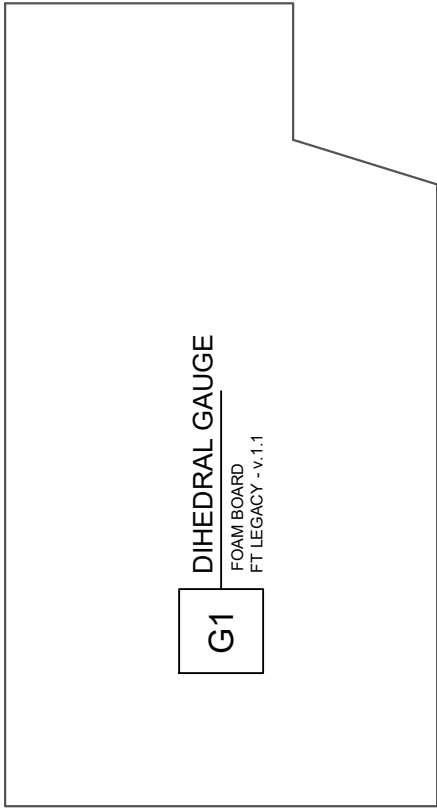


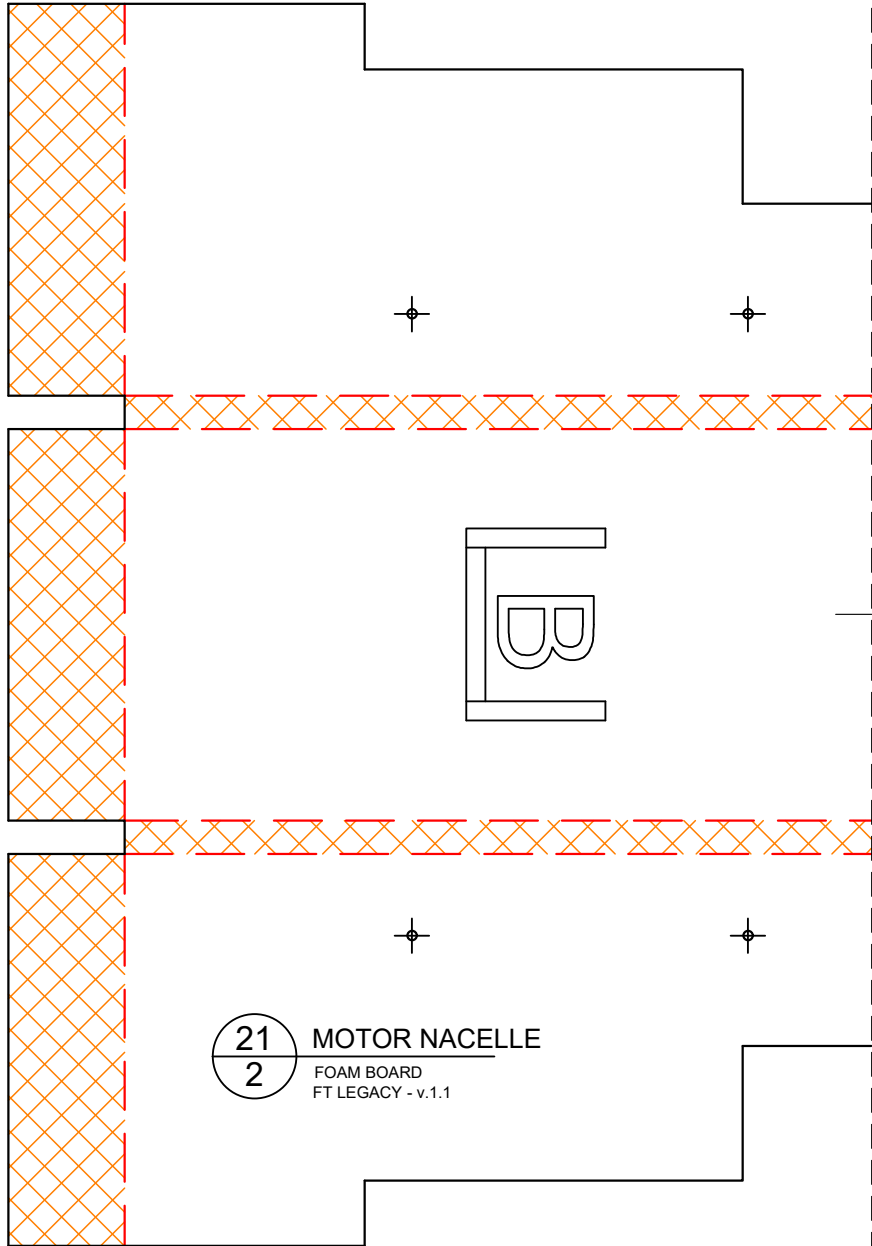
IN
CM





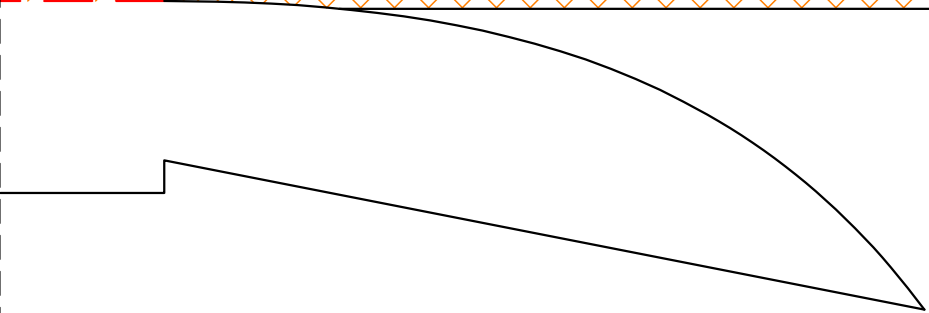
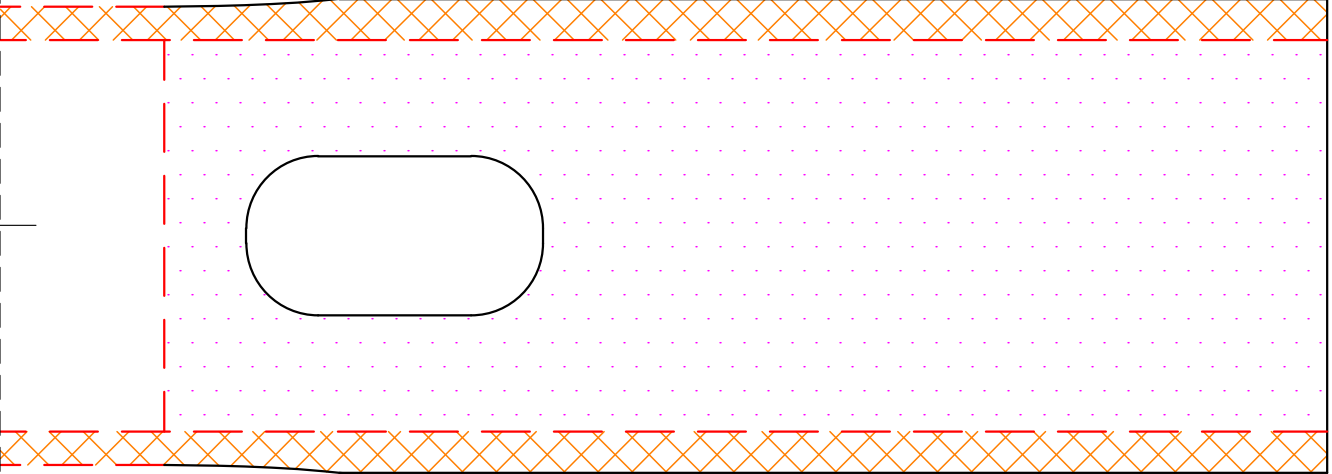
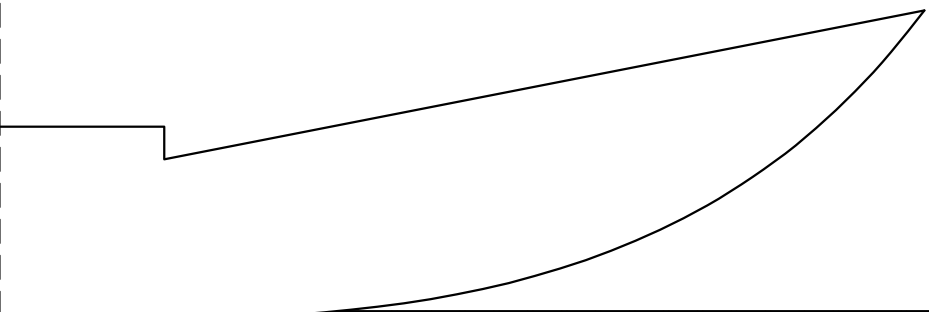
IN
CM





21
2 MOTOR NACELLE
FOAM BOARD
FT LEGACY - v.1.1



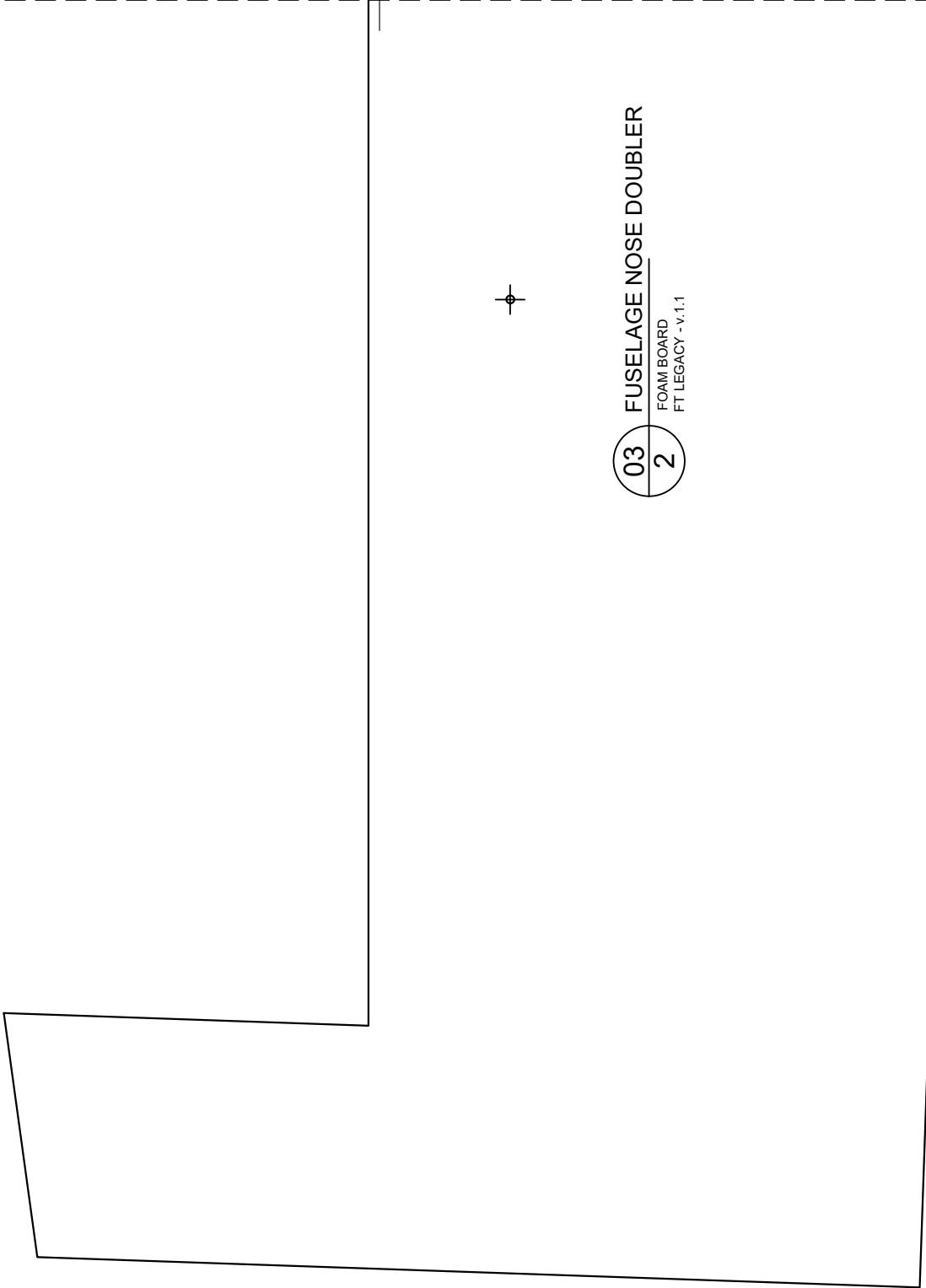




03 FUSELAGE NOSE DOUBLER

2
FOAM BOARD
FT LEGACY - v.1.1





03 FUSELAGE NOSE DOUBLER
FOAM BOARD
FT LEGACY - v.1.1





IN
CM

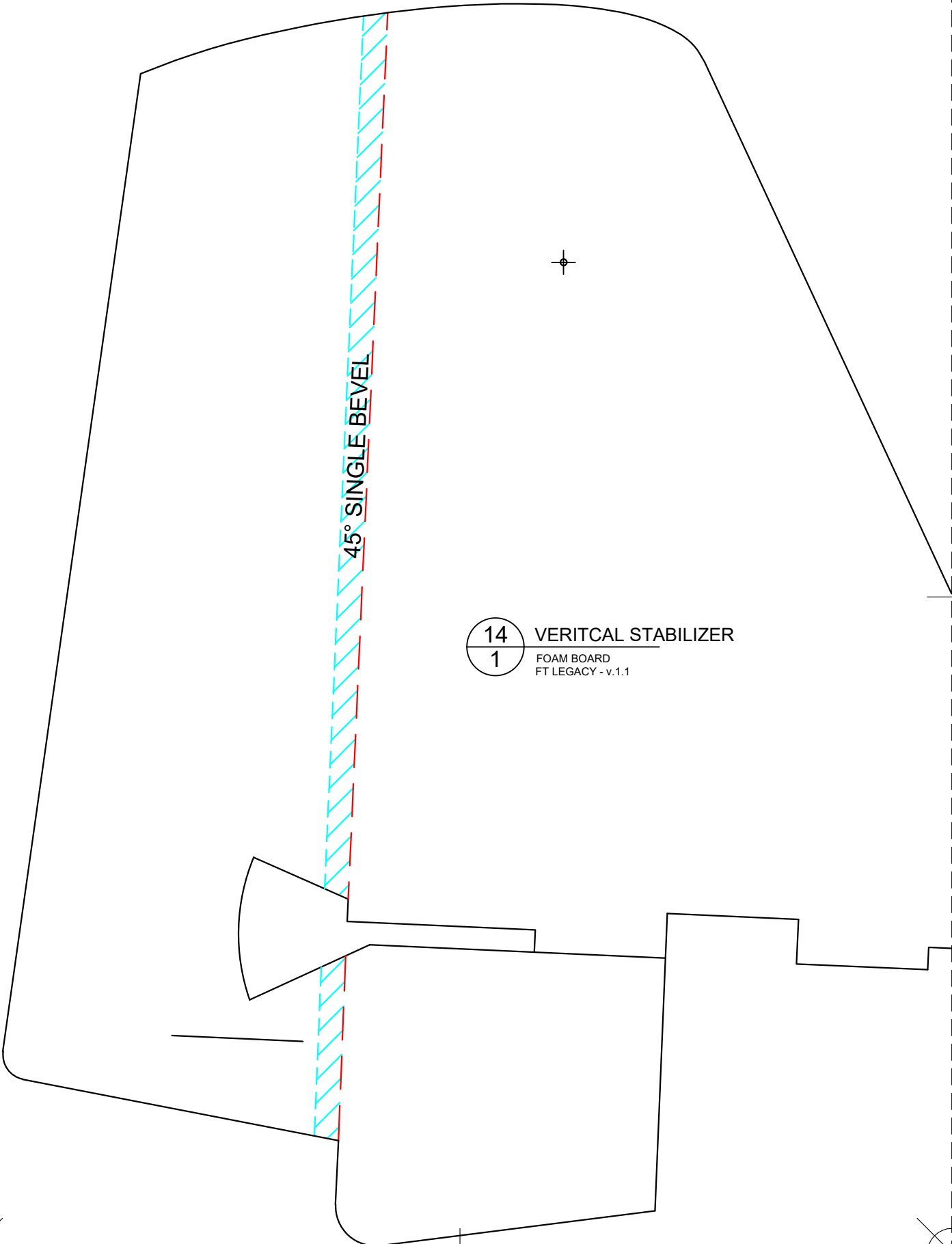


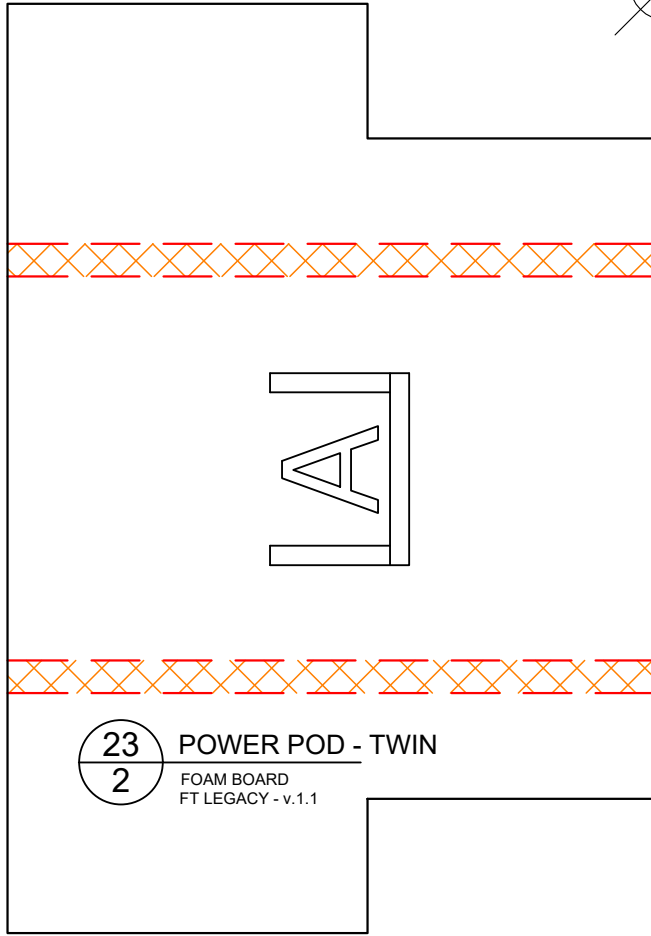
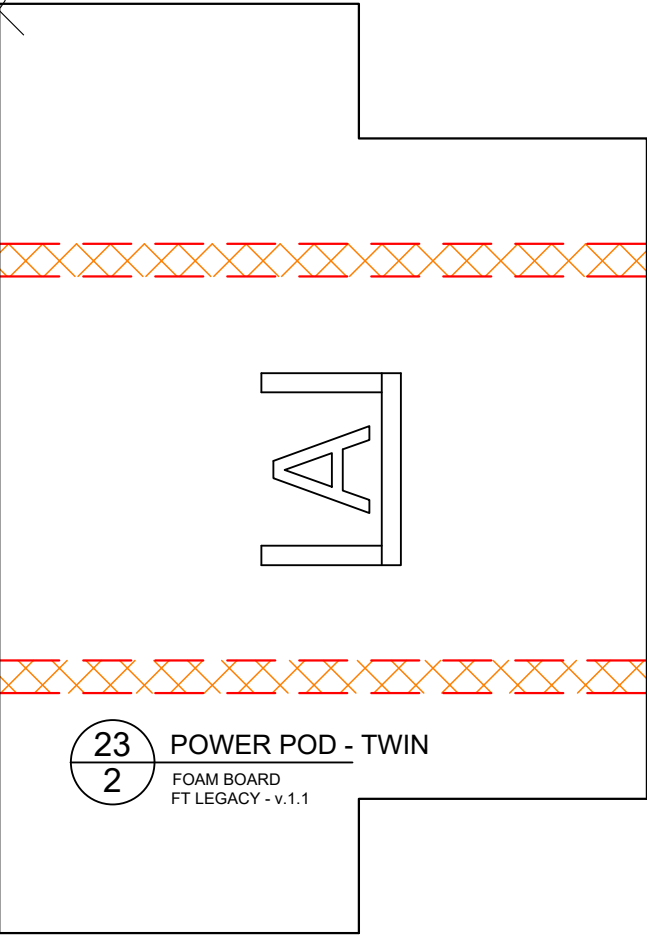
45° SINGLE BEVEL

14
1

VERTICAL STABILIZER

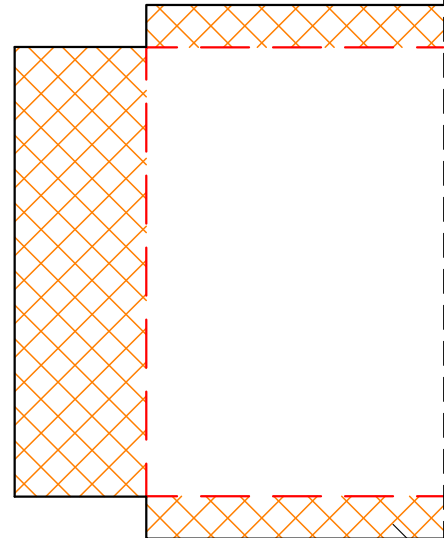
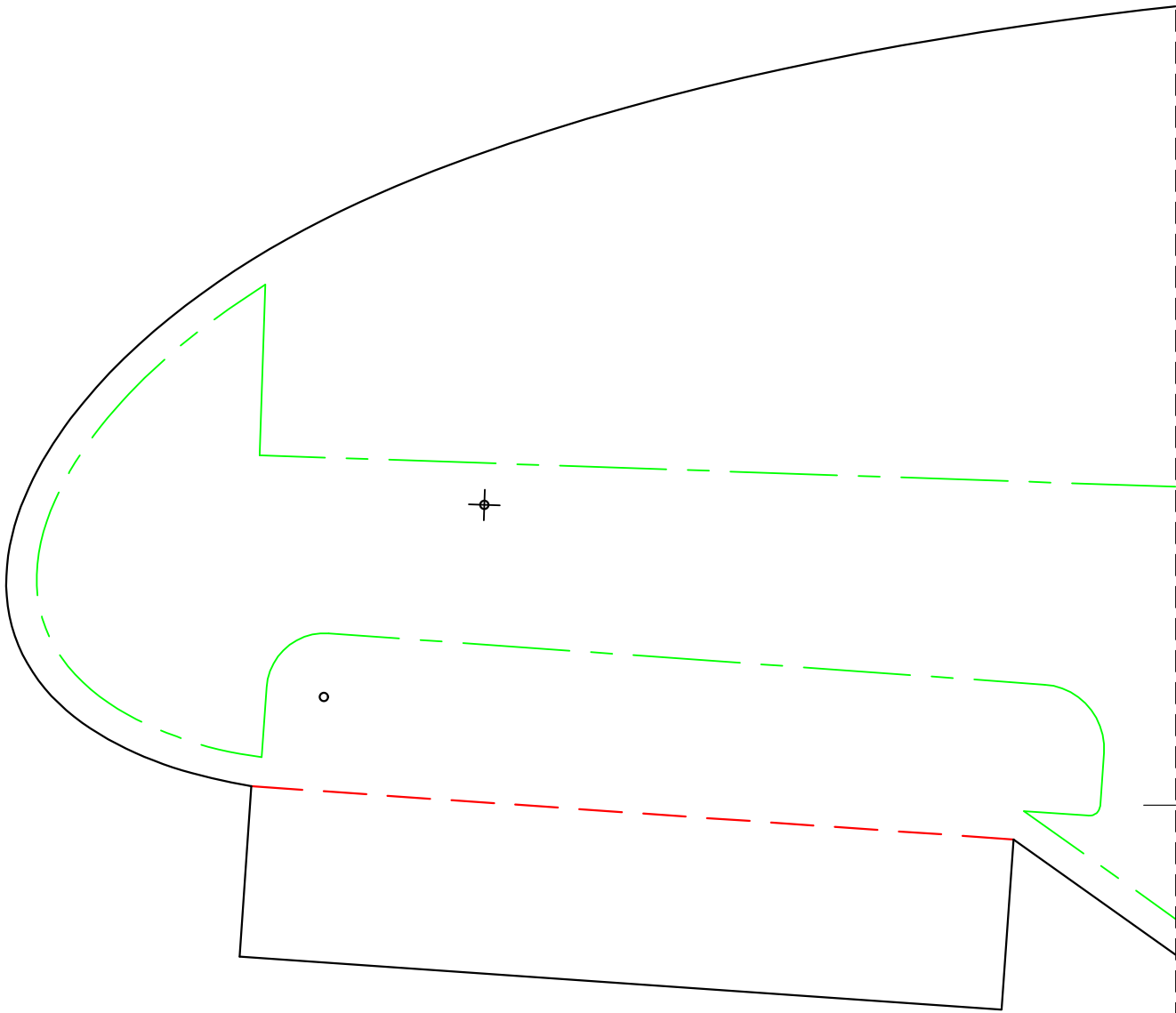
FOAM BOARD
FT LEGACY - v.1.1





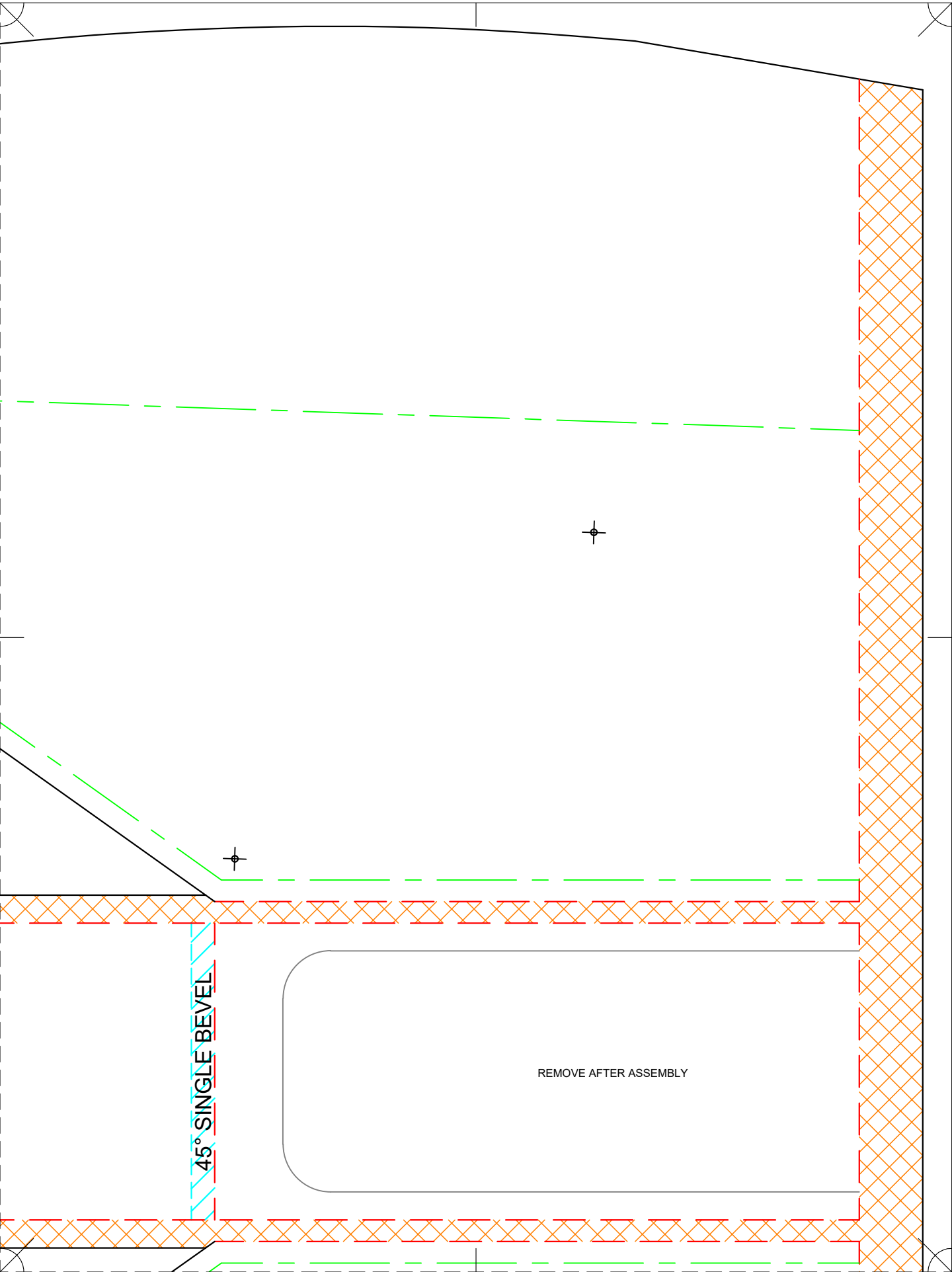


IN
CM





IN
CM



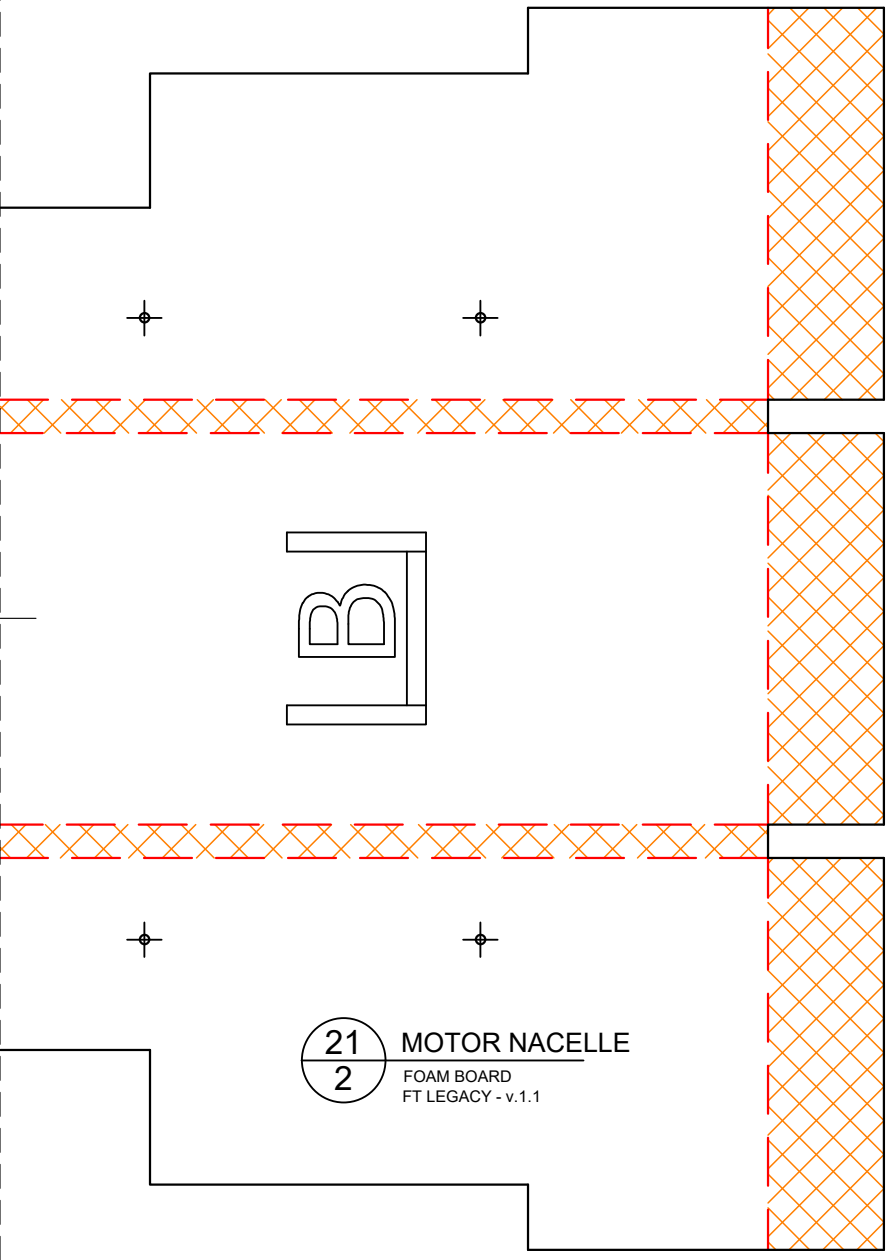
45° SINGLE BEVEL

REMOVE AFTER ASSEMBLY

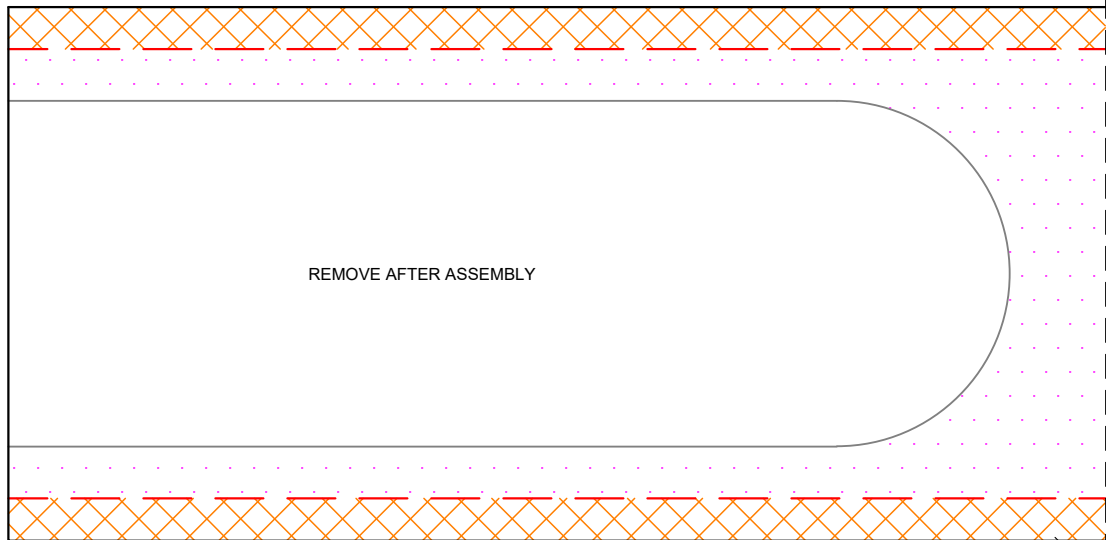
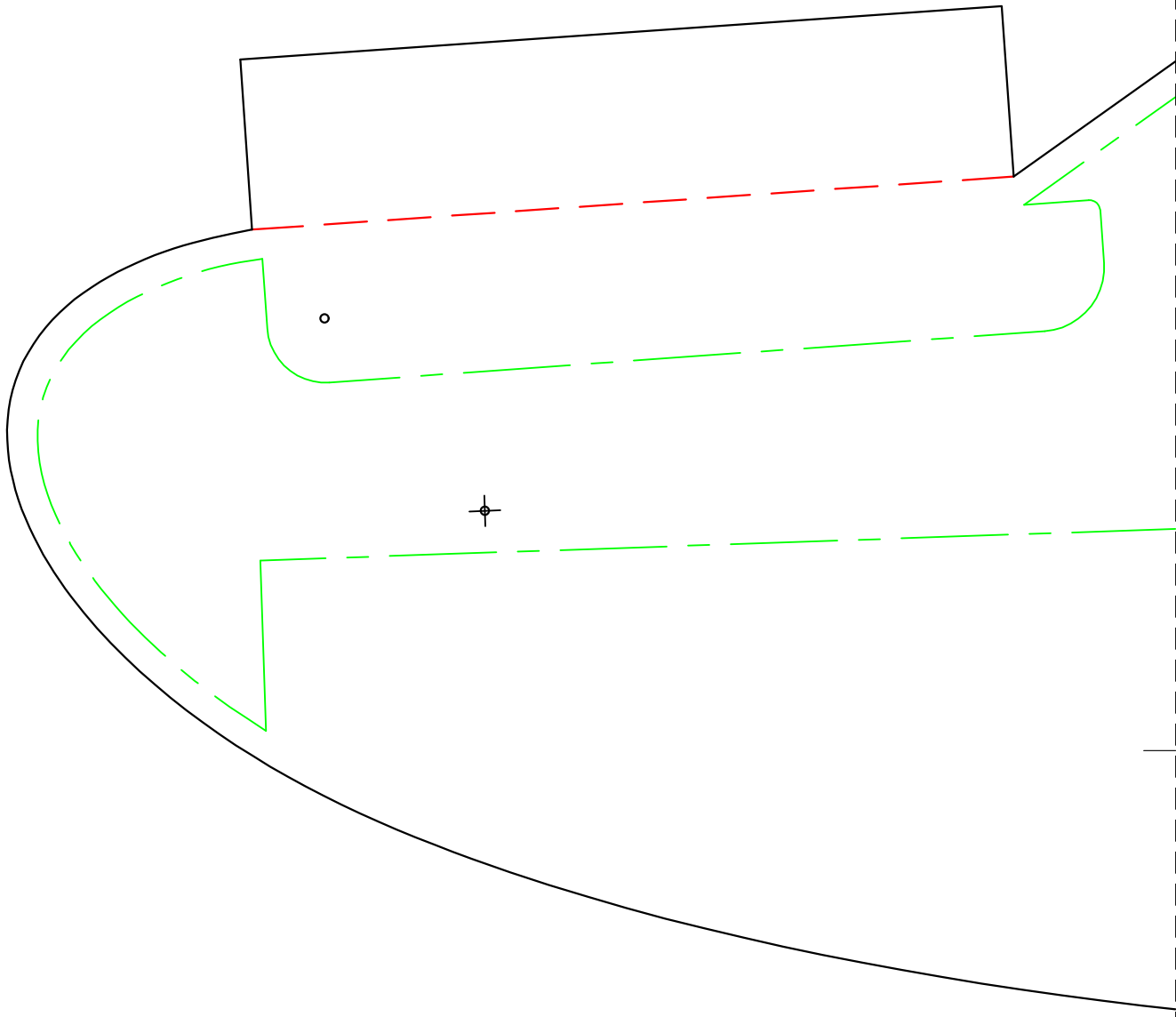


IN
CM





21 MOTOR NACELLE
2 FOAM BOARD
FT LEGACY - v.1.1



01
1

FUSELAGE FRONT

FOAM BOARD
FT LEGACY - v.1.1

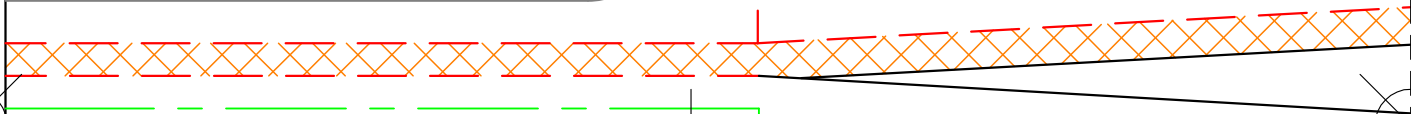
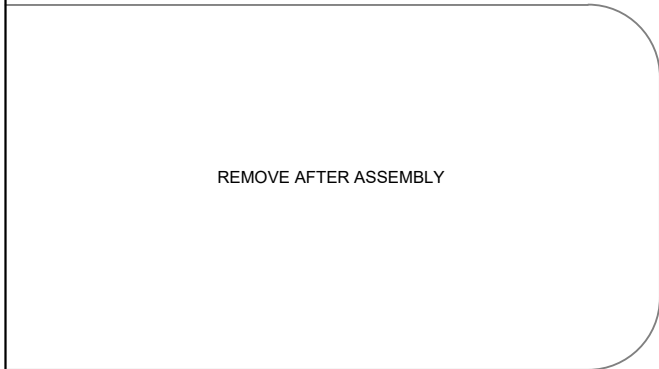
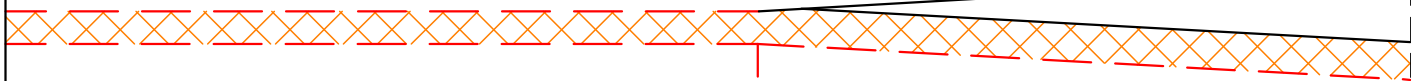
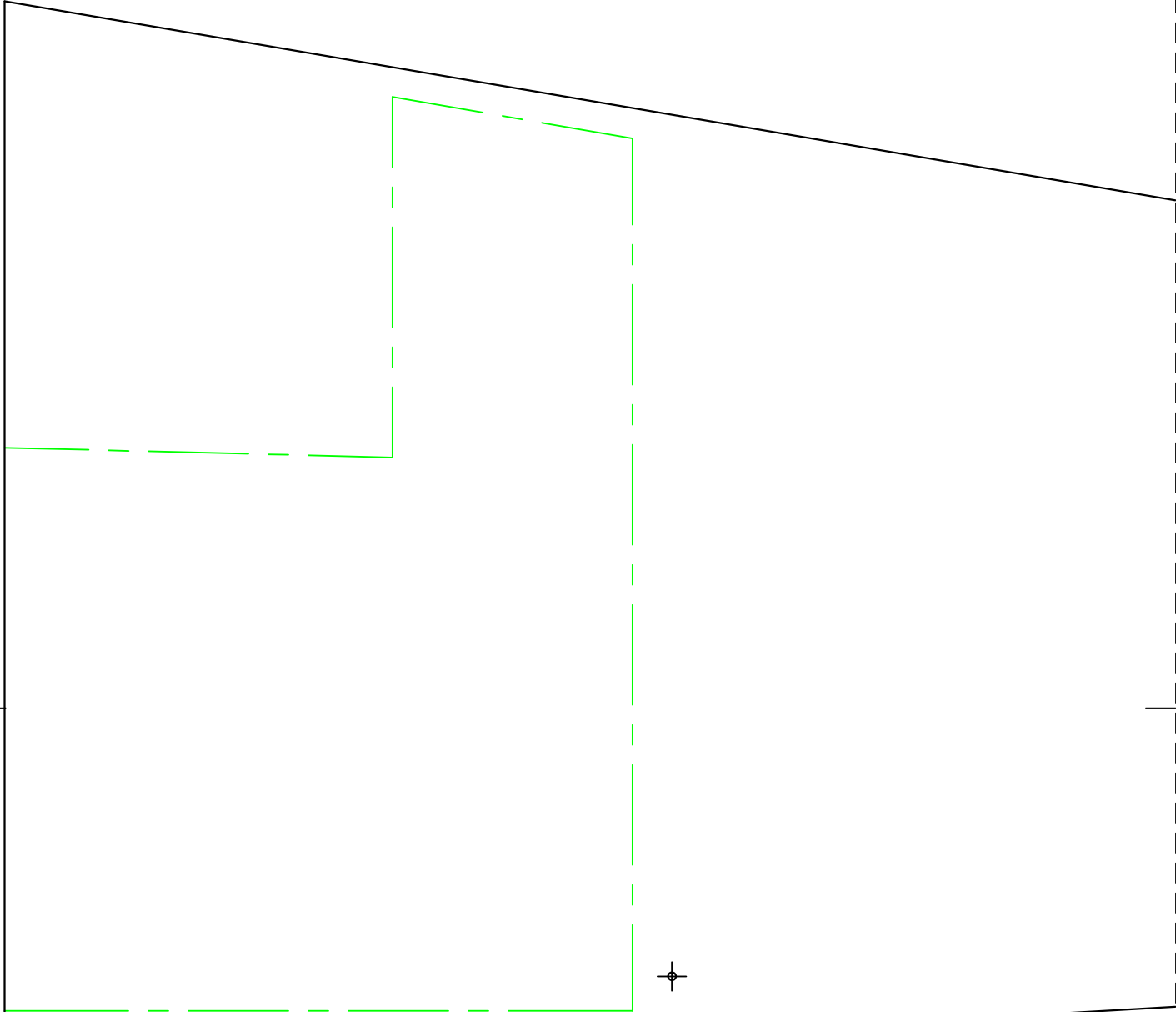


09
1

NOSE COVER - SINGLE

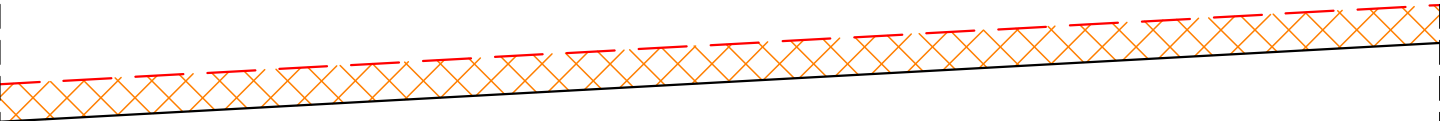
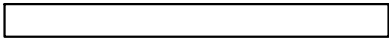
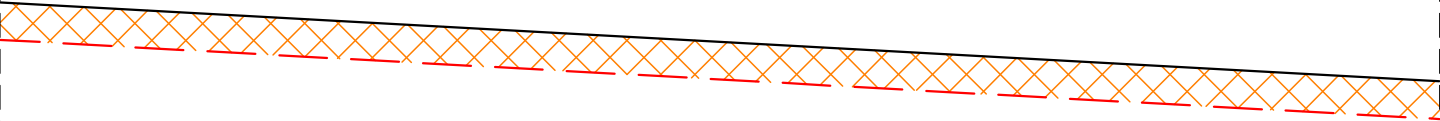
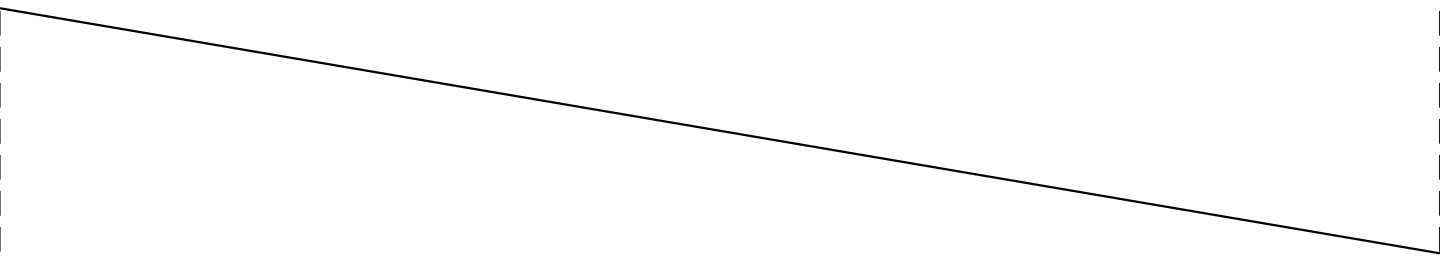
FOAM BOARD
FT LEGACY - v.1.1





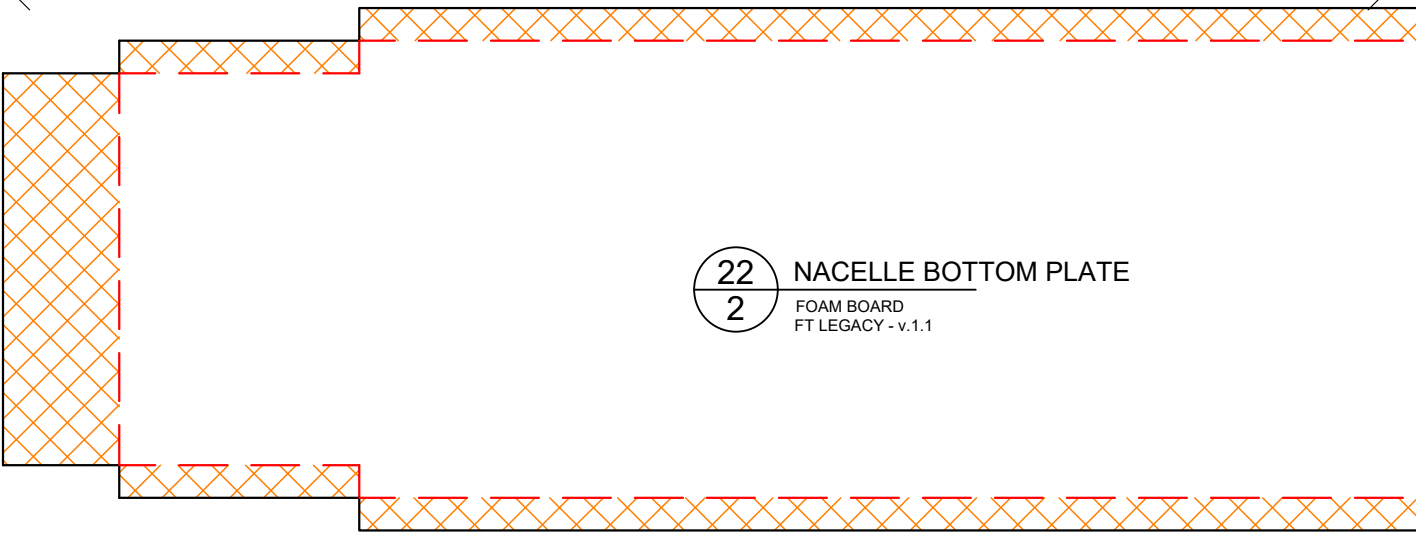


IN
CM





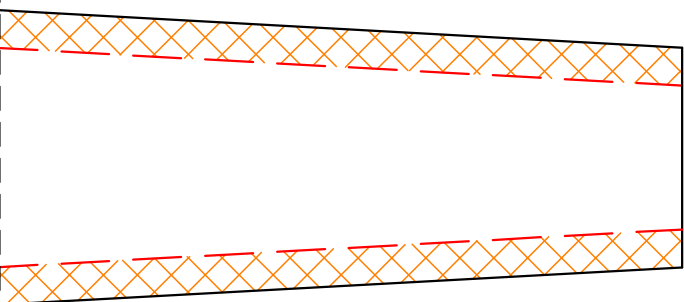
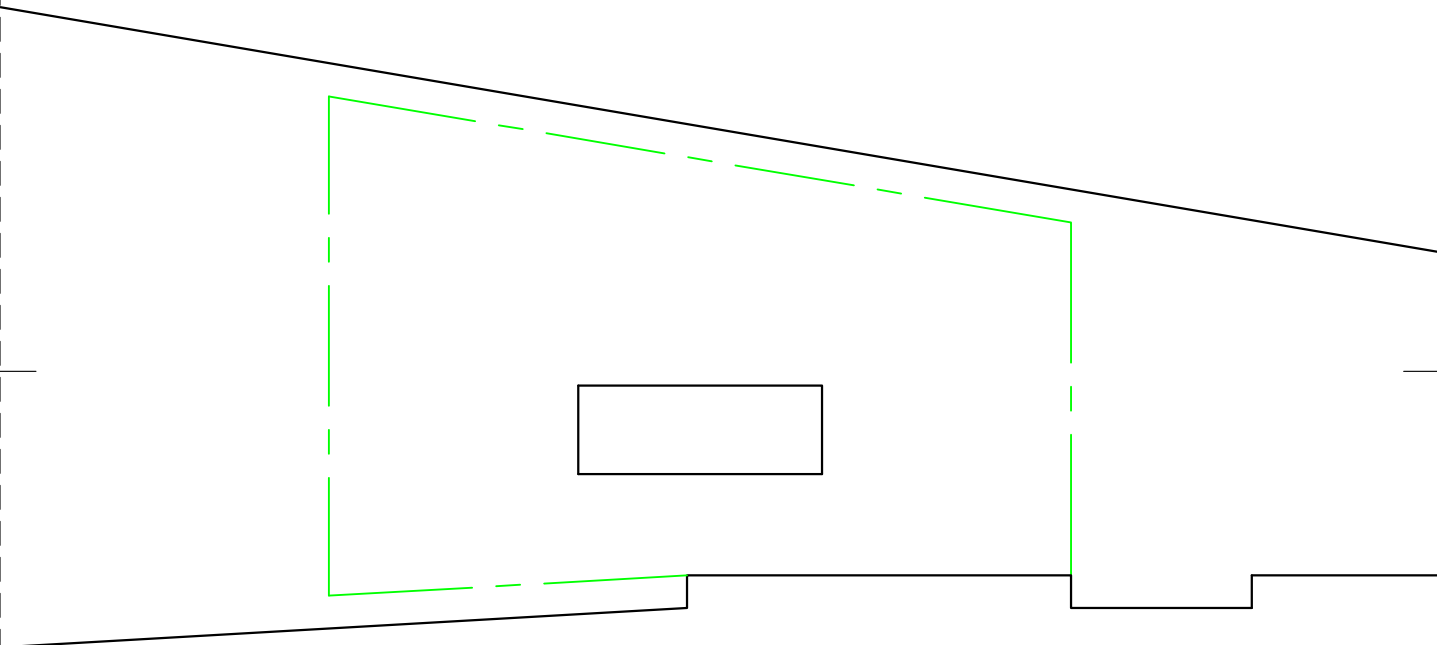
IN
CM

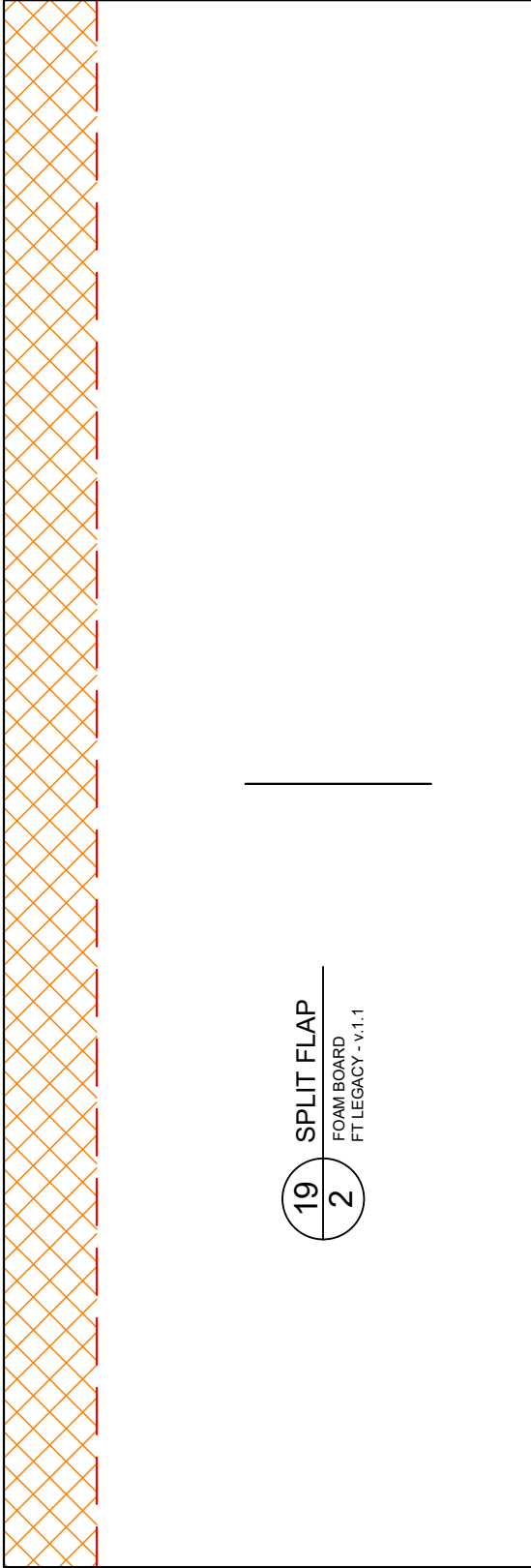
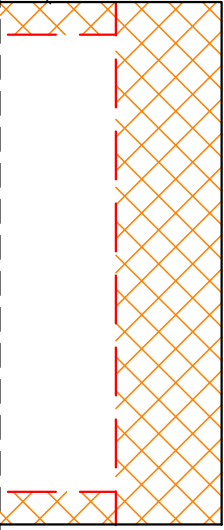


22
2

NACELLE BOTTOM PLATE

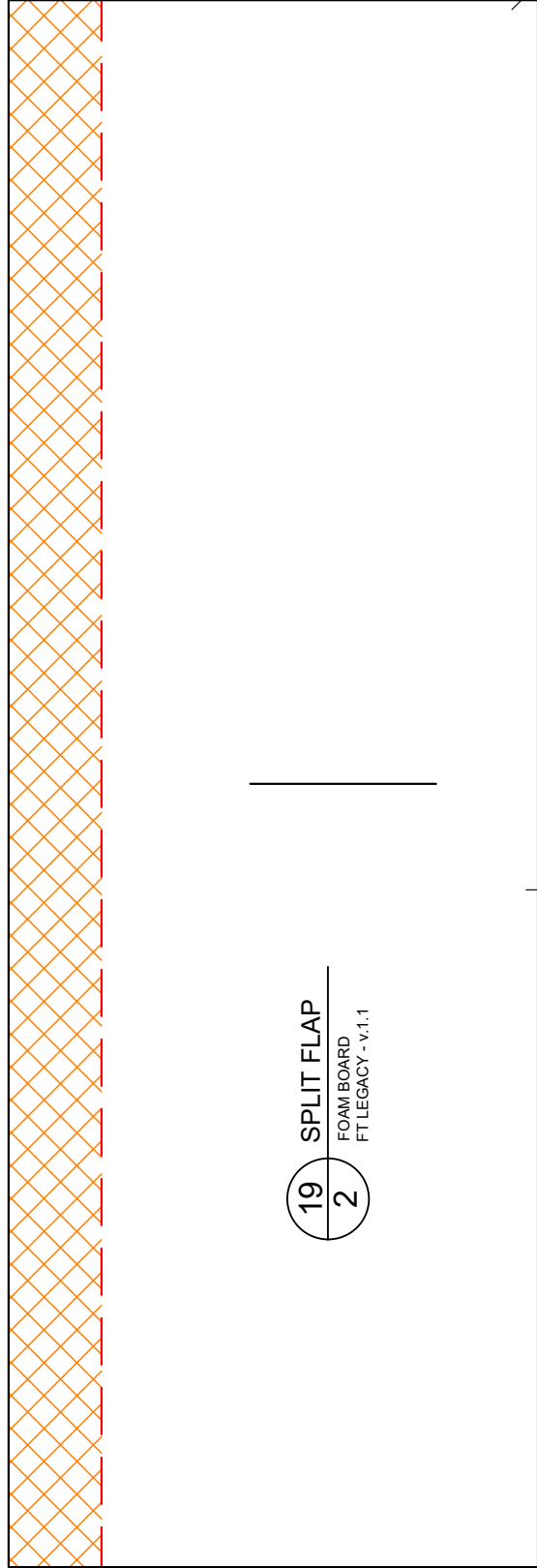
FOAM BOARD
FT LEGACY - v.1.1





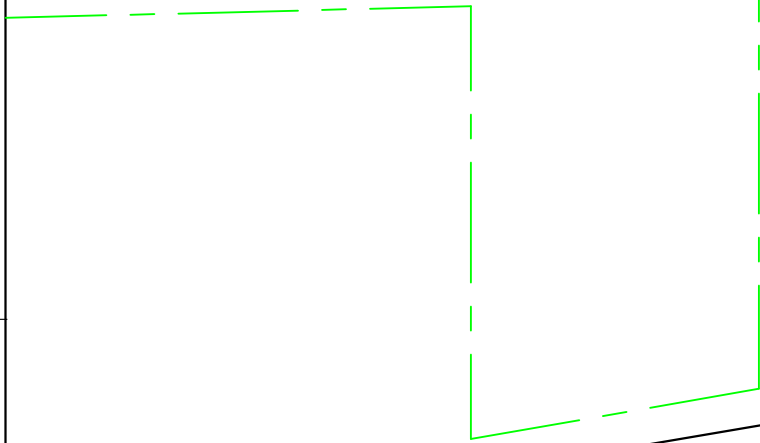
19
2

SPLIT FLAP
FOAM BOARD
FT LEGACY - v.1.1

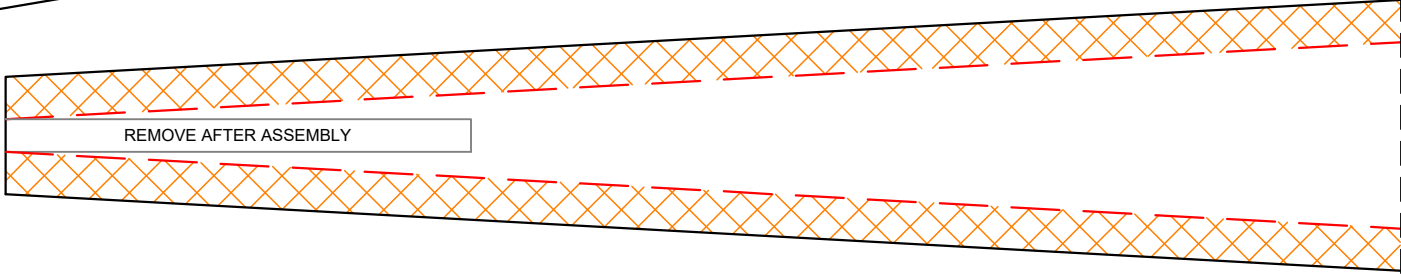


19
2

SPLIT FLAP
FOAM BOARD
FT LEGACY - v.1.1



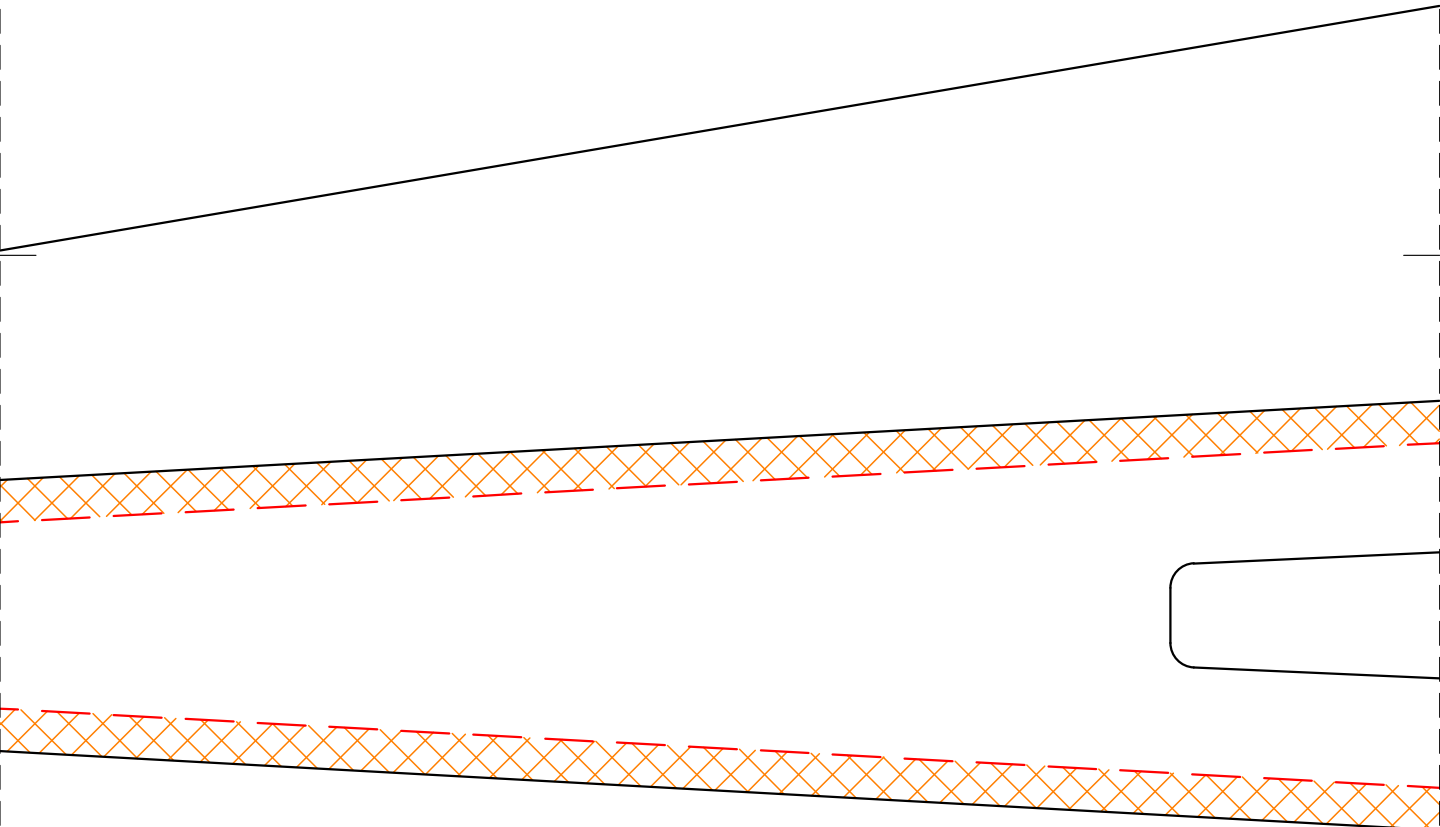
REMOVE AFTER ASSEMBLY

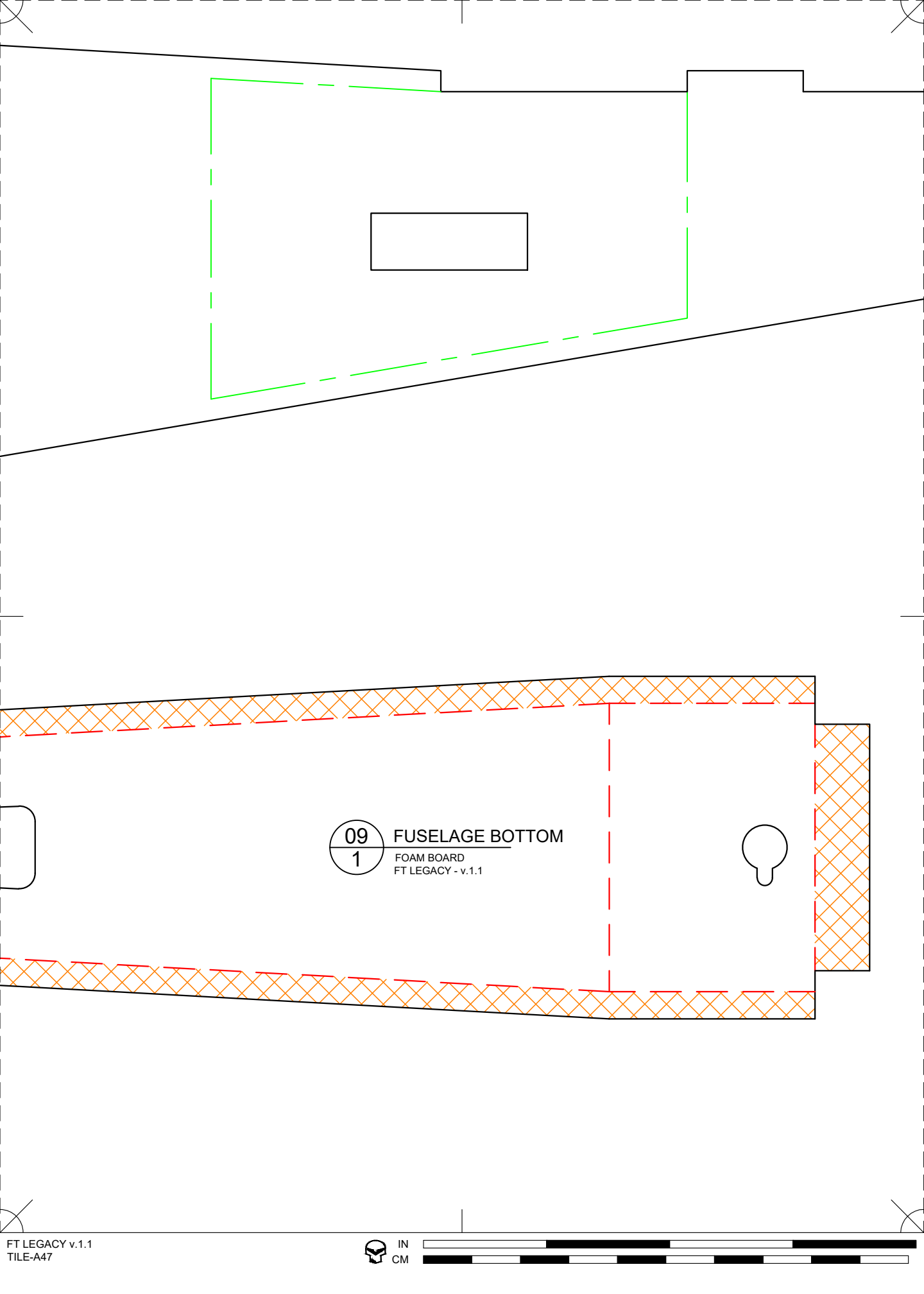


02
1

FUSELAGE REAR

FOAM BOARD
FT LEGACY - v.1.1





09
1

FUSELAGE BOTTOM

FOAM BOARD
FT LEGACY - v.1.1



