



www.flitetest.com



# FT Legacy

Designed By: Josh Bixler  
Drawing By: Dan Sponholz  
Version: 1.1  
Date: 2018.11.20

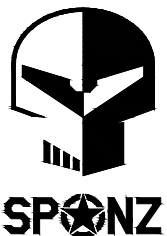


## GENERAL SPECIFICATIONS:

LENGTH:	39.50 in		1003 mm
CG:	2.50 in		64 mm
WINGSPAN:	56.50 in		1435 mm
WING AREA:	497.1 in <sup>2</sup>		32.1 dm <sup>2</sup>
DRY WEIGHT:	39.2 oz.		1111 g
ALL UP WEIGHT:	52.0 oz.		1475 g
WING LOADING:	15.1 oz/ft <sup>2</sup>		46 g/dm <sup>2</sup>
WCL:	8.1		
THROWS:	12° - 16°		
EXPO:	30%		
CHANNELS:	3-6 [THR   RUD   ELE   AIL   FLAPS   ACC]		

## RECOMMENDED ELECTRONICS:

MOTOR:	Park 425 1000 kv min.
PROPELLER:	9x4.5 (4S) to 10x4.5 (3S)
ESC:	30 amp min.
SERVOS:	(2-7) 9 gram
BATTERY:	2200-3300 mAh 3S-4S



## BUILD SKILL LEVEL:

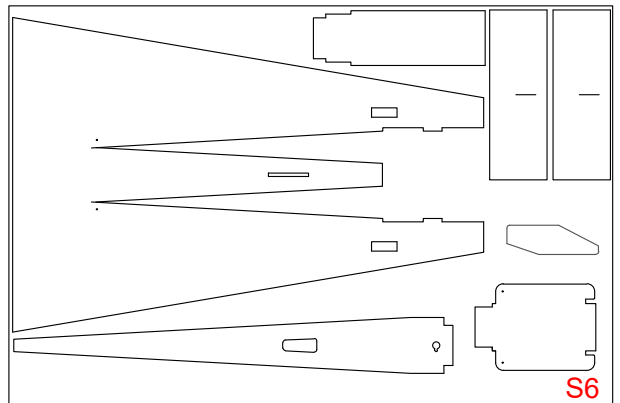
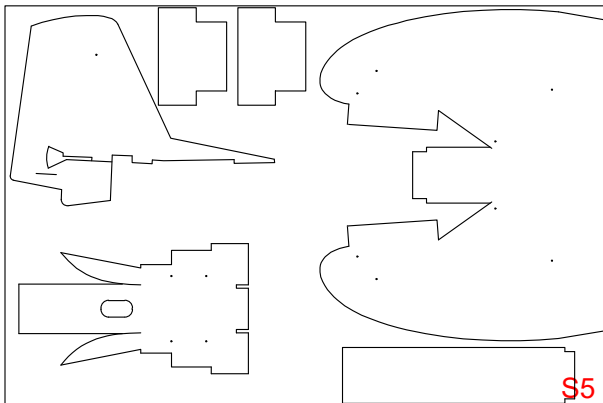
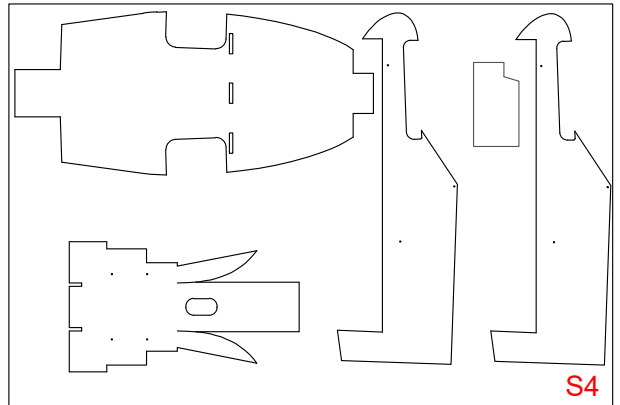
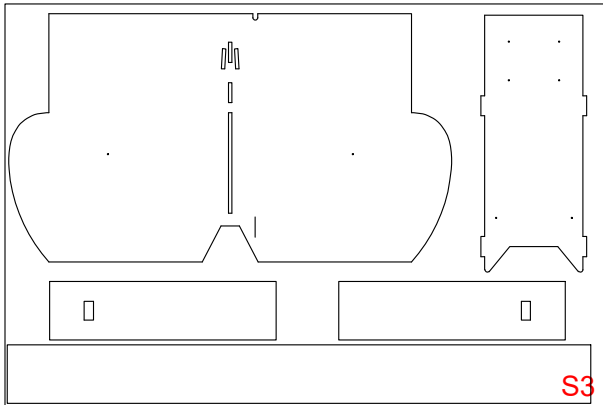
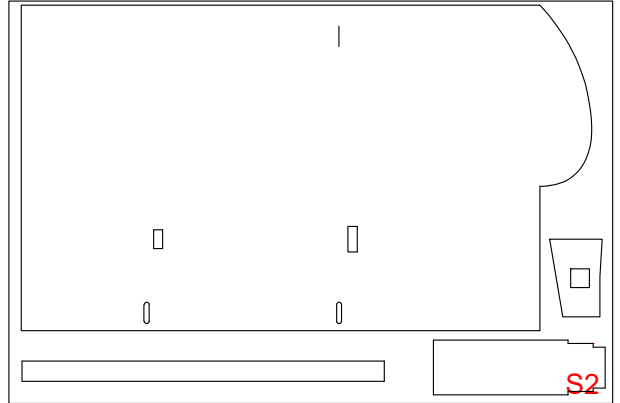
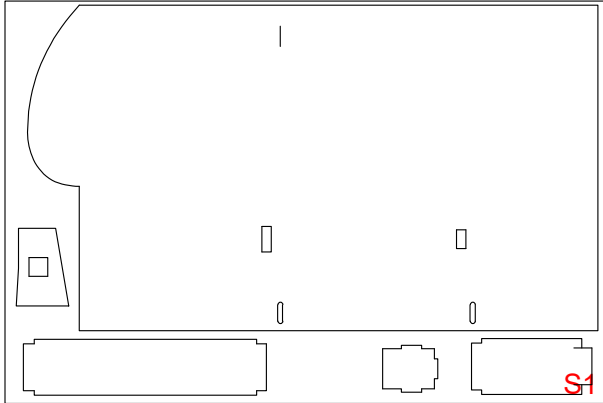


## PILOT SKILL LEVEL:



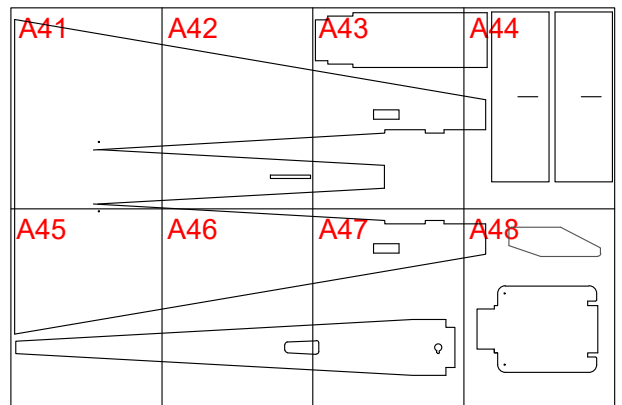
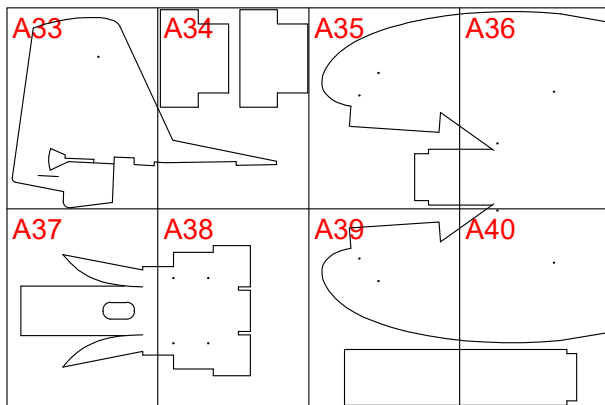
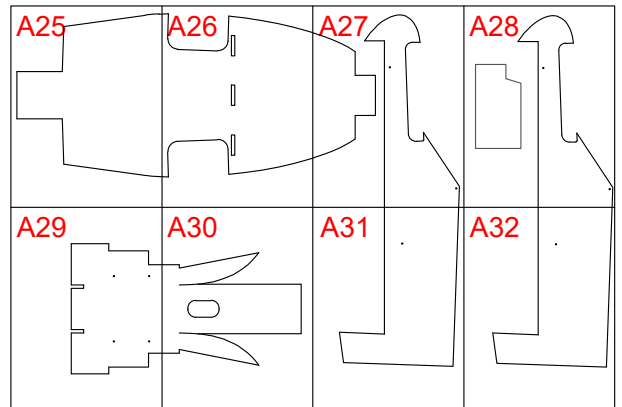
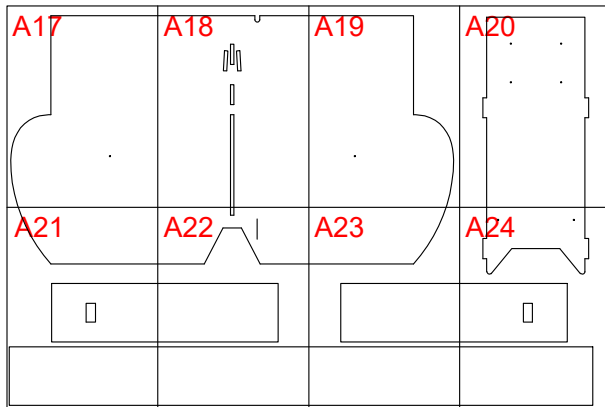
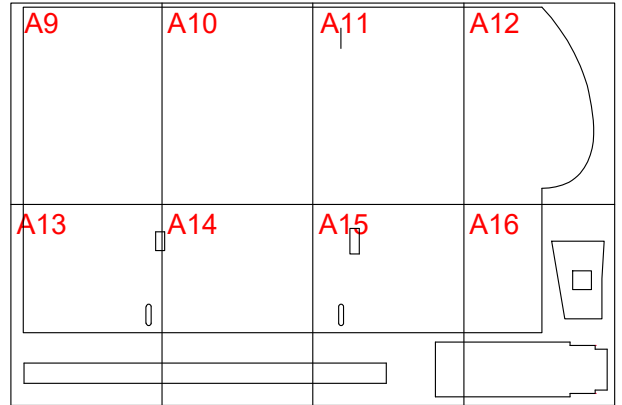
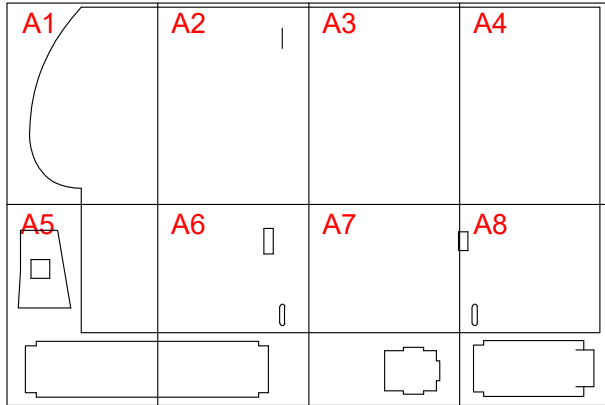


# FT Legacy: Full-Size Key



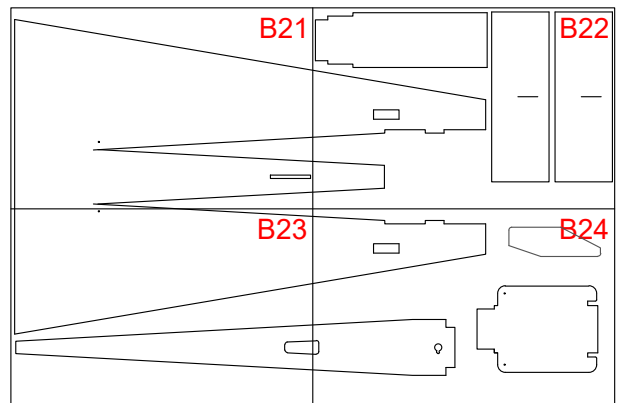
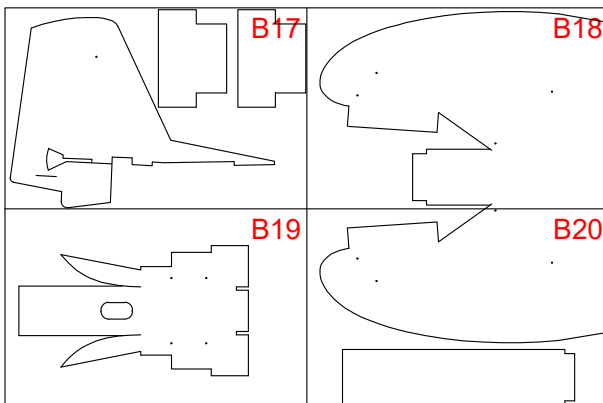
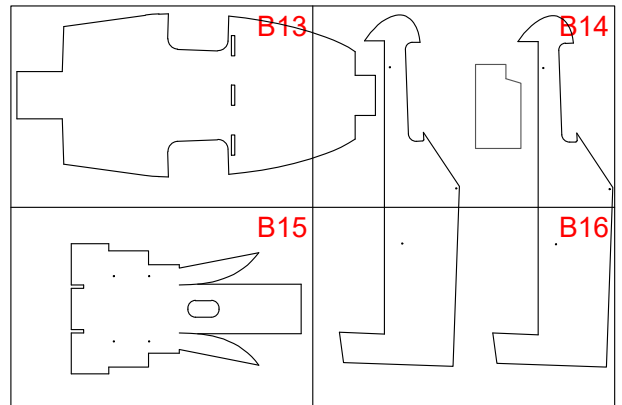
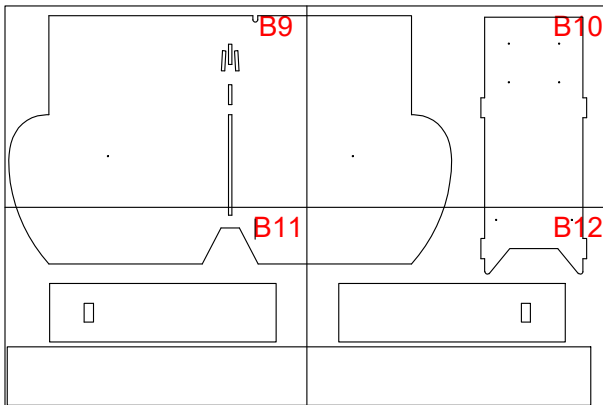
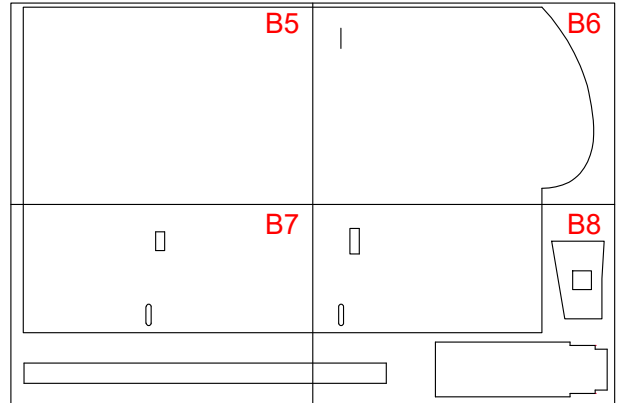
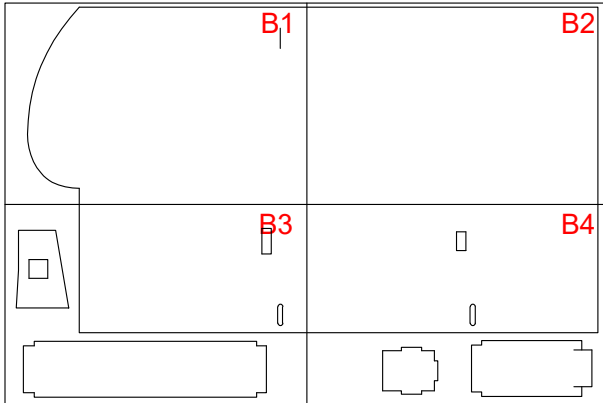


# FT Legacy: Tile A Key





# FT Legacy: Tile B Key

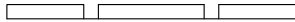
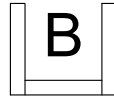
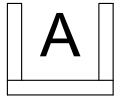




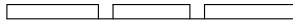
# Drawing Key



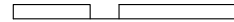
## FOLD TYPES



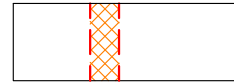
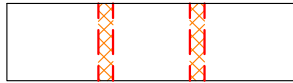
A - FOLD (ABOVE)



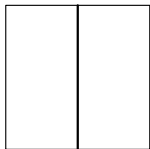
B - FOLD (BESIDE)



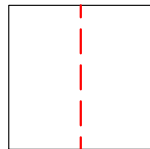
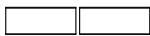
C - FOLD (COVER)



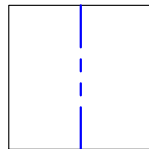
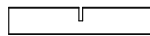
## LINE TYPE/COLOR



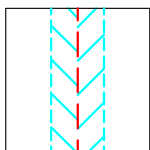
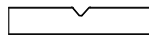
CUT



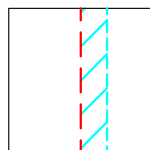
50% SCORE



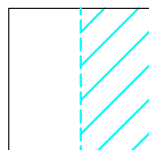
CREASE



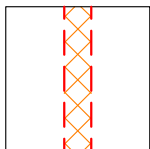
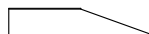
45° DOUBLE BEVEL



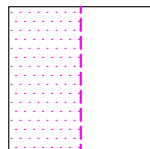
45° SINGLE BEVEL



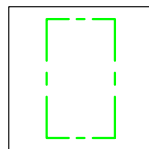
EDGE BEVEL



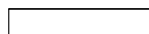
CAVITY



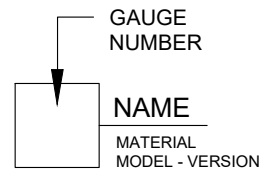
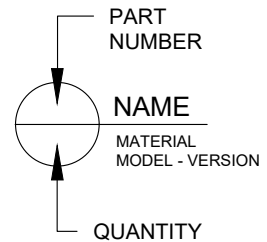
REMOVE PAPER



REFERENCE/  
OPTIONAL



## SYMBOLS



CENTER OF GRAVITY (CG)

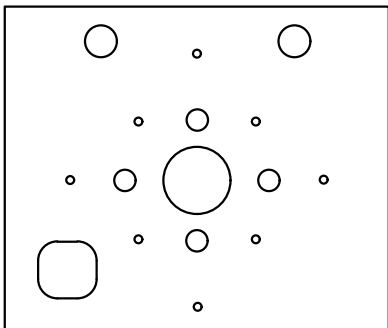
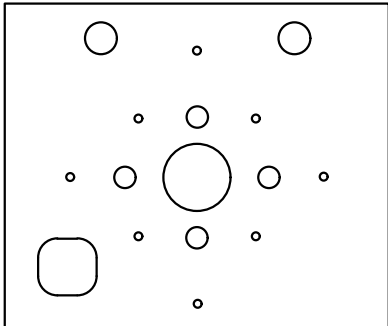
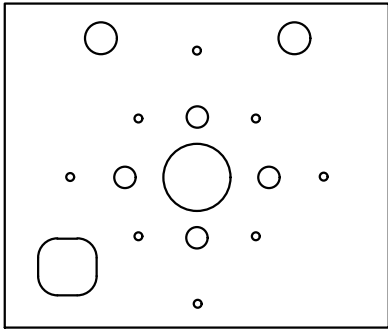


# FT Legacy: Wood Parts

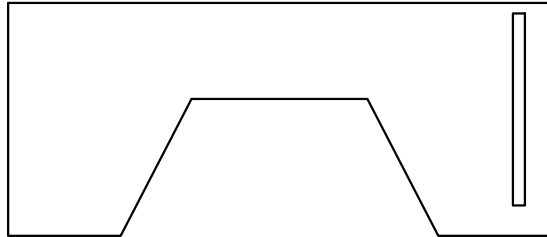


HOBBY GRADE PLYWOOD  
3/32" (2.4 mm) THICK

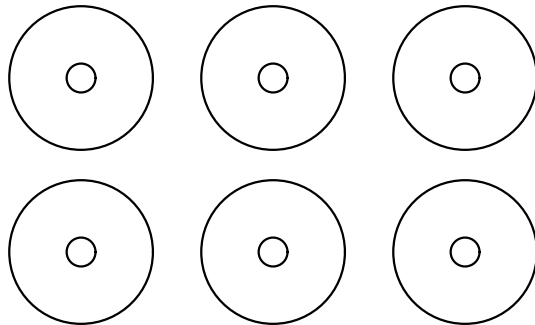
## FT STANDARD FIREWALL



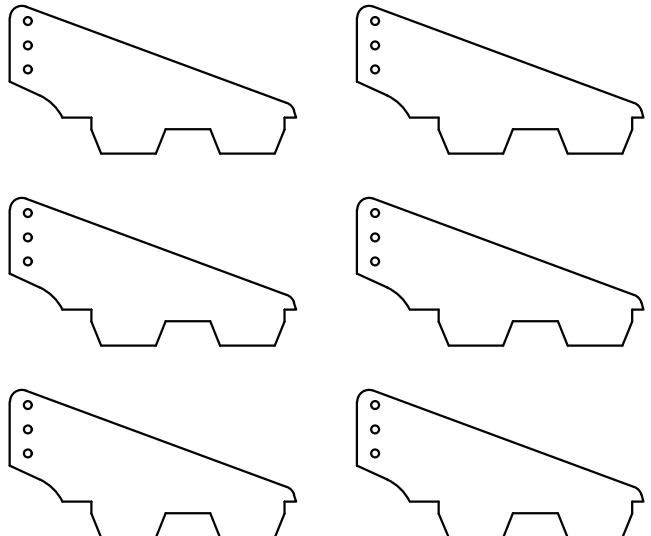
## ELEVATOR SUPPORT



## FT REINFORCEMENT DISCS



## FT STANDARD CONTROL HORN



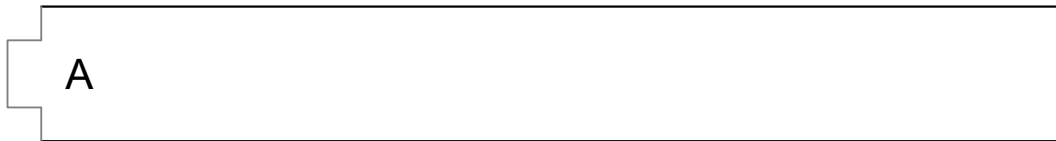
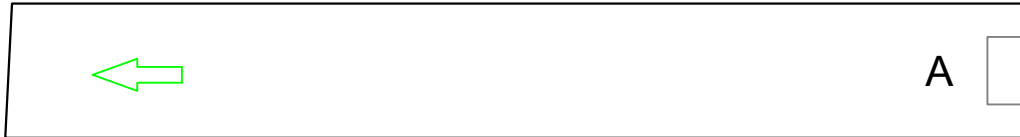


# FT Legacy: Wood Parts



HOBBY GRADE PLYWOOD  
3/32" (2.4 mm) THICK

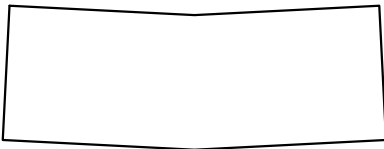
## WOOD SPAR A



## WOOD SPAR B



## WOOD SPAR JOINER

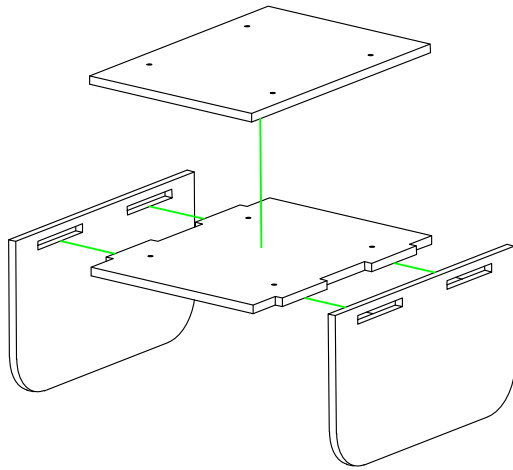




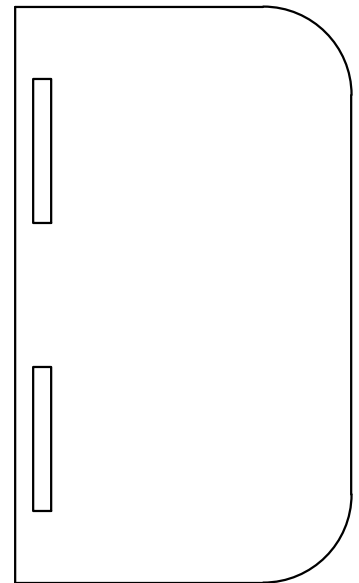
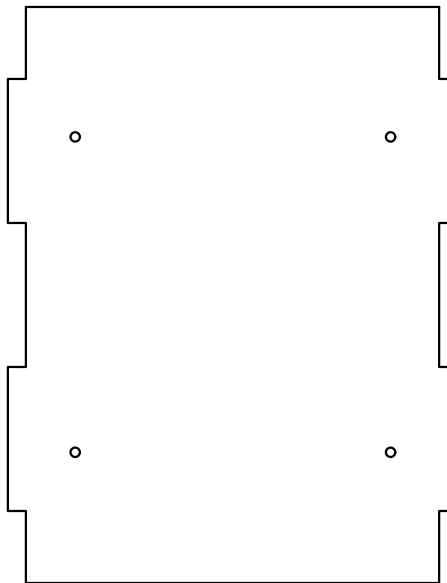
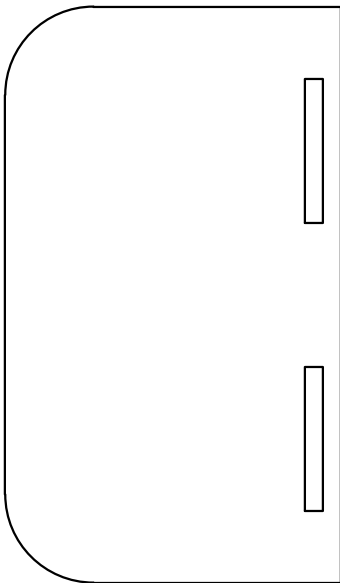
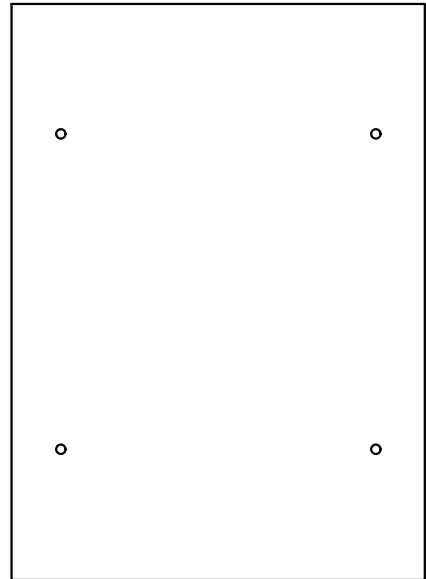
# FT Legacy: Wood Parts



LANDING GEAR MOUNT  
HOBBY GRADE PLYWOOD  
3/32" (2.4 mm) THICK



GLUE ASSEMBLY TOGETHER  
USING CA OR INSTANT GLUE







# FT Legacy: VINYL WINDOWS



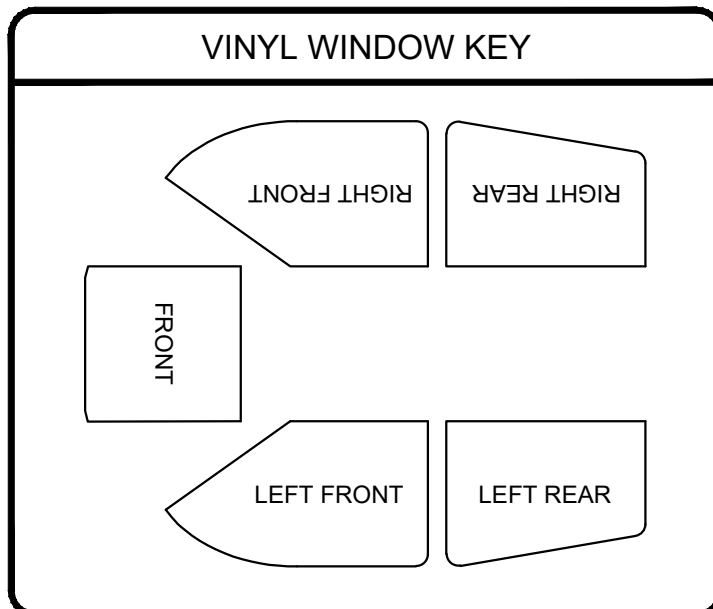
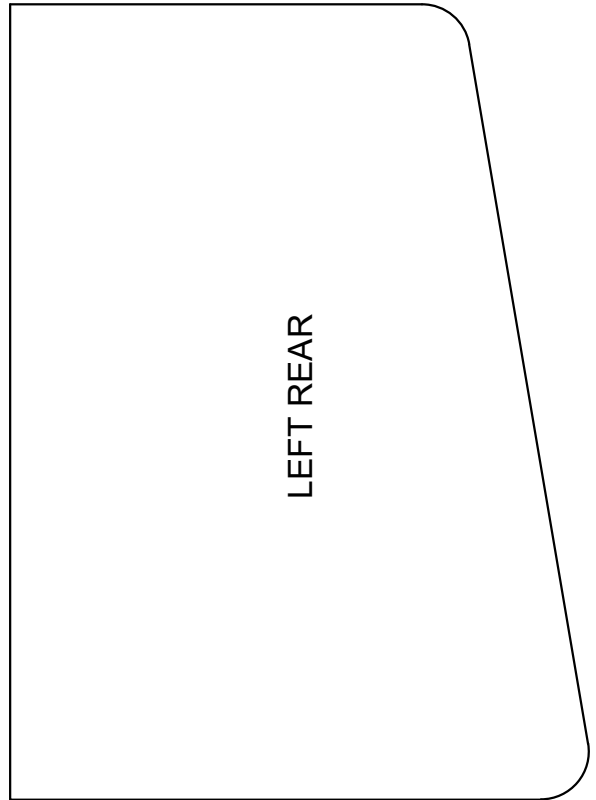
RIGHT FRONT

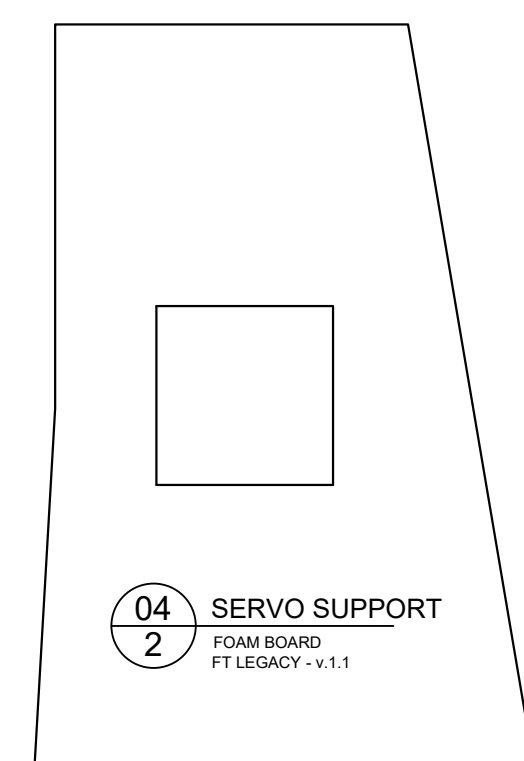
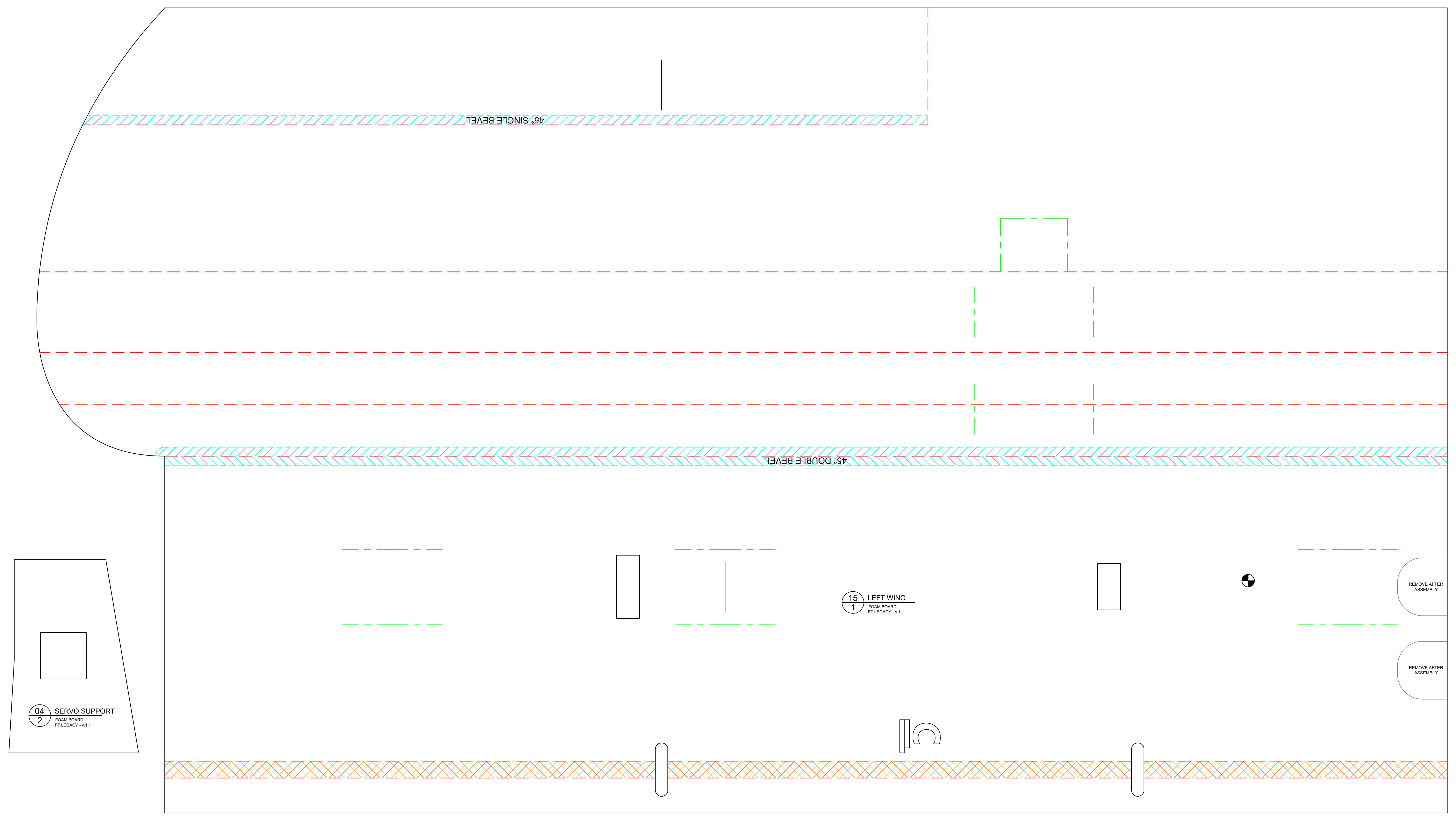
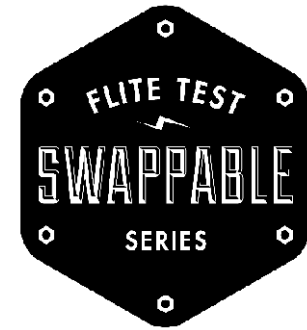
LEFT FRONT

FRONT



# FT Legacy: VINYL WINDOWS



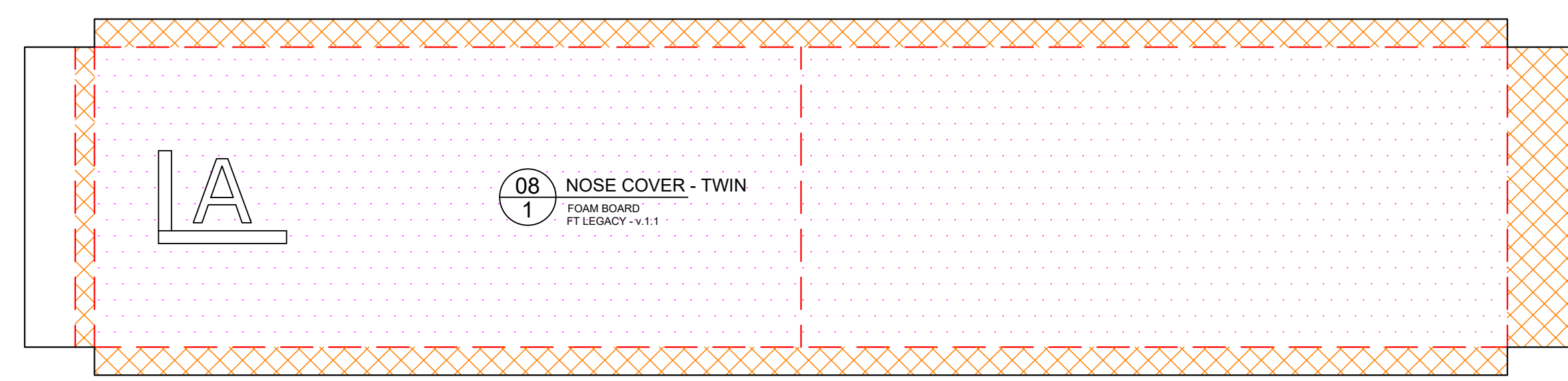


04 2 SERVO SUPPORT  
FOAM BOARD  
FT LEGACY - v.1.1

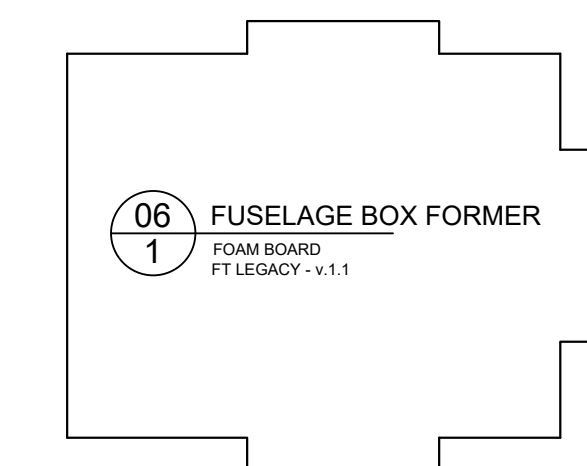
15 1 LEFT WING  
FOAM BOARD  
FT LEGACY - v.1.1

REMOVE AFTER ASSEMBLY

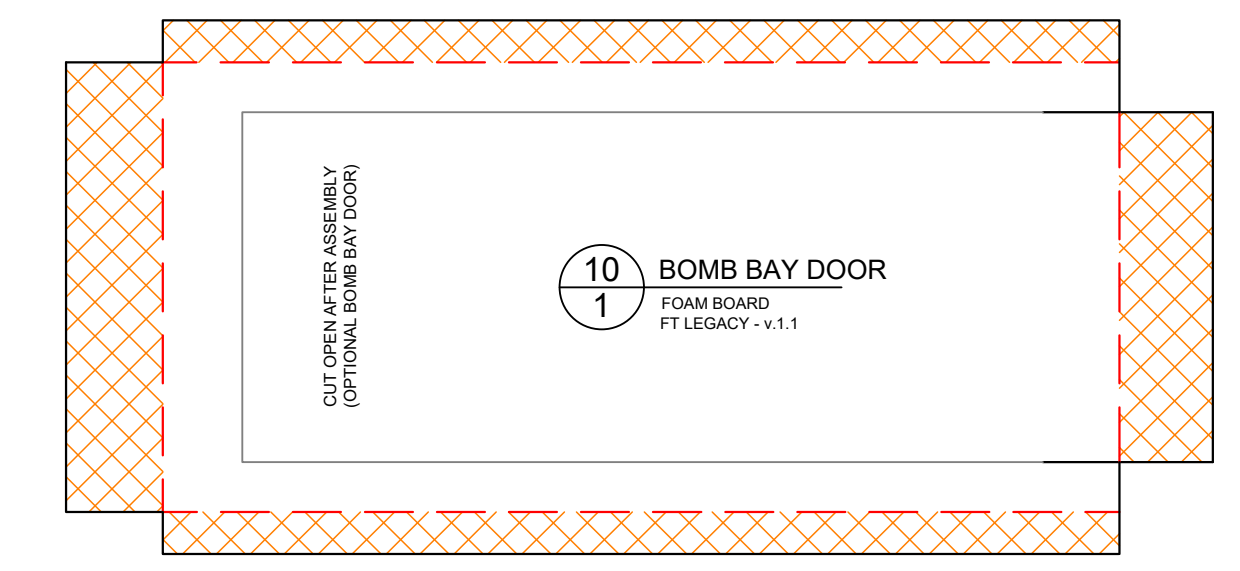
REMOVE AFTER ASSEMBLY



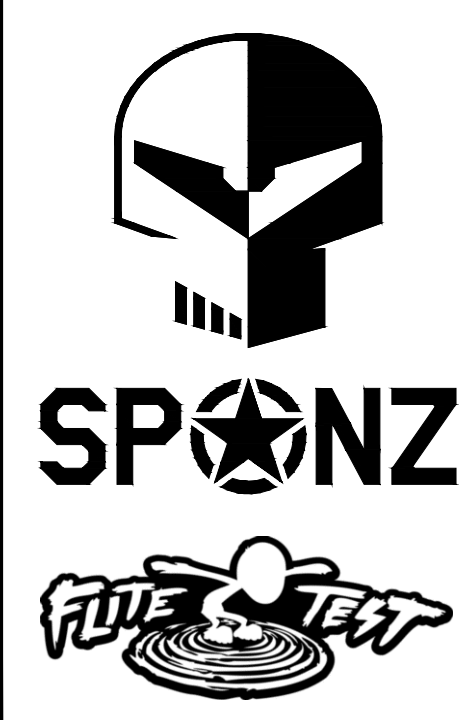
08 1 NOSE COVER - TWIN  
FOAM BOARD  
FT LEGACY - v.1.1

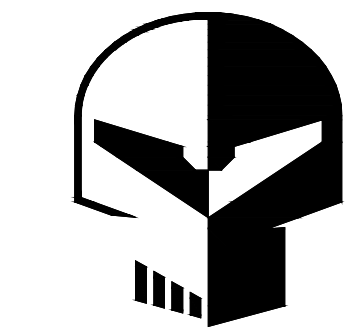
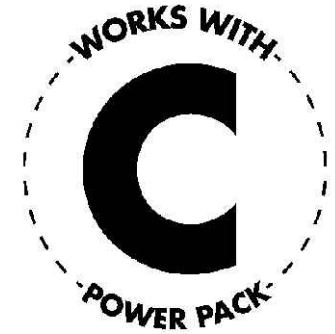
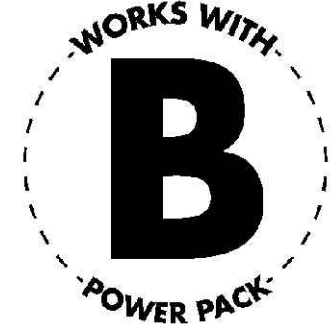


06 1 FUSELAGE BOX FORMER  
FOAM BOARD  
FT LEGACY - v.1.1



10 1 BOMB BAY DOOR  
FOAM BOARD  
FT LEGACY - v.1.1

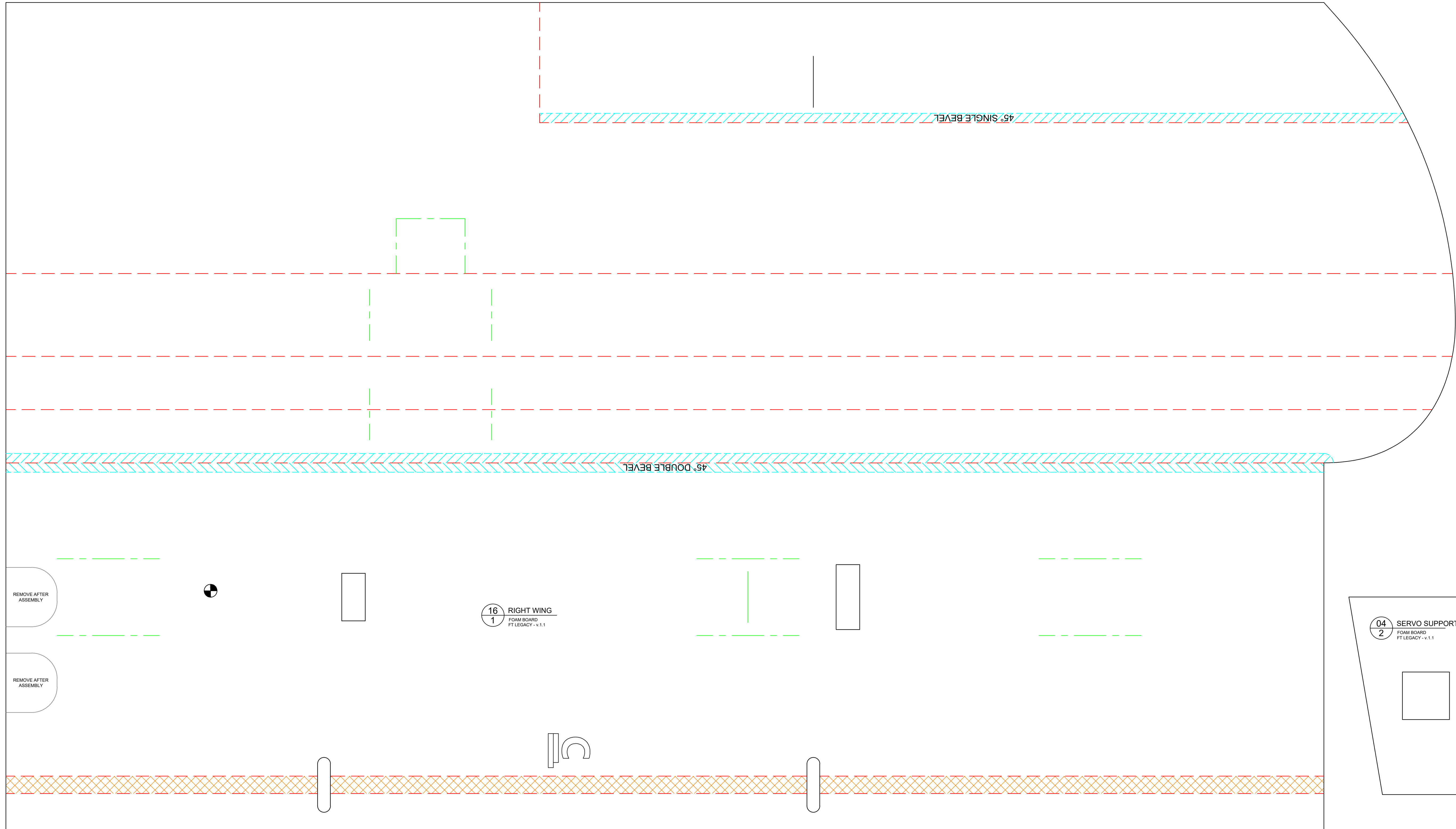




SPONZ



www.flitetest.com



REMOVE AFTER ASSEMBLY

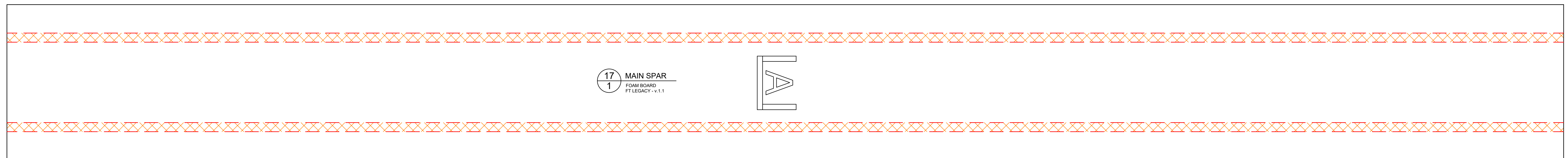
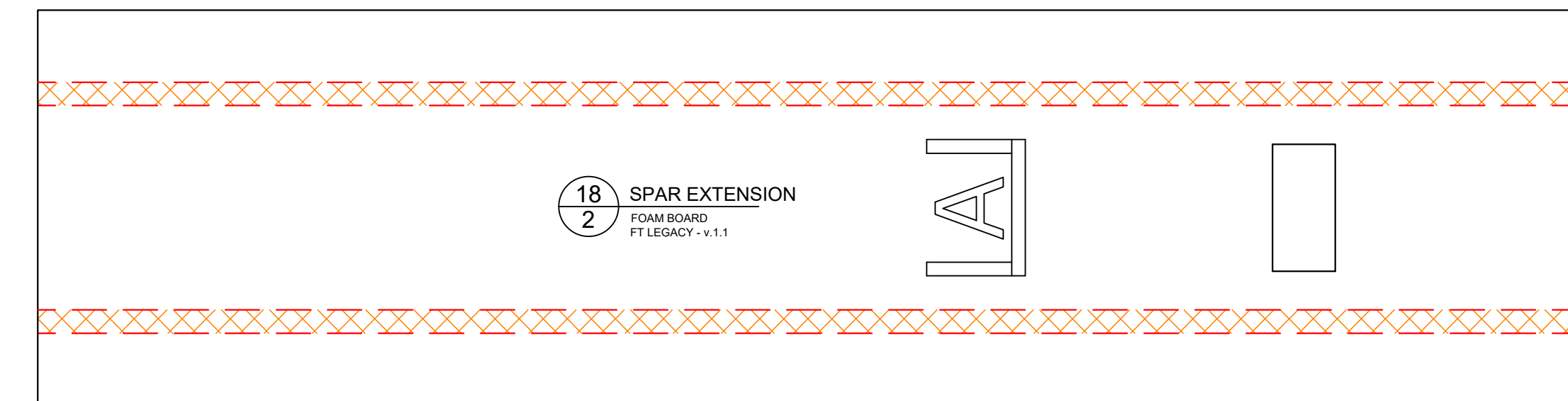
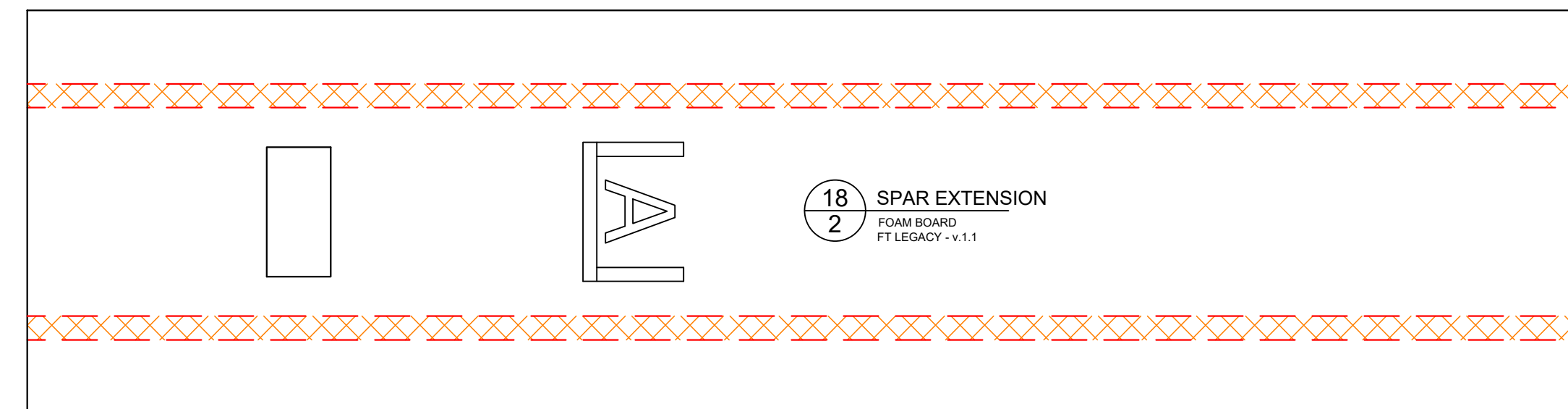
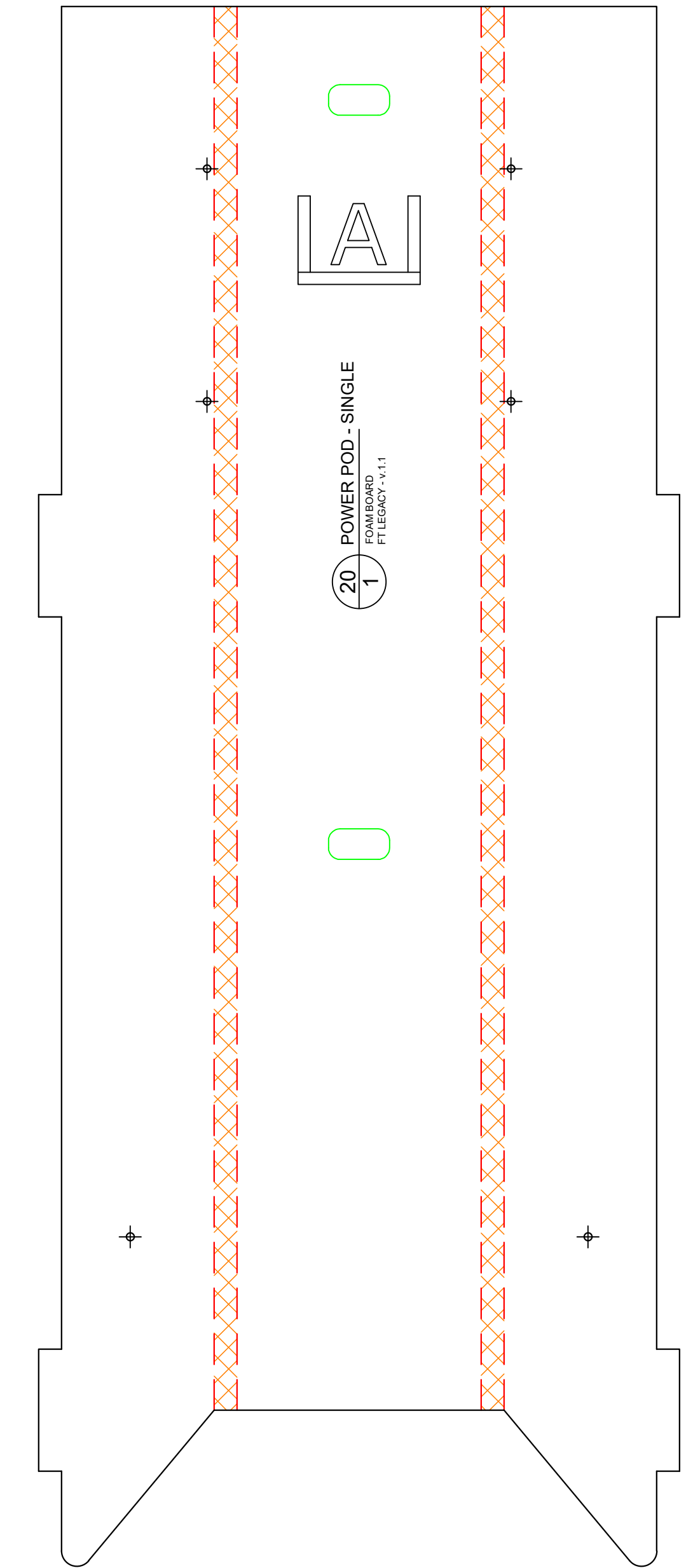
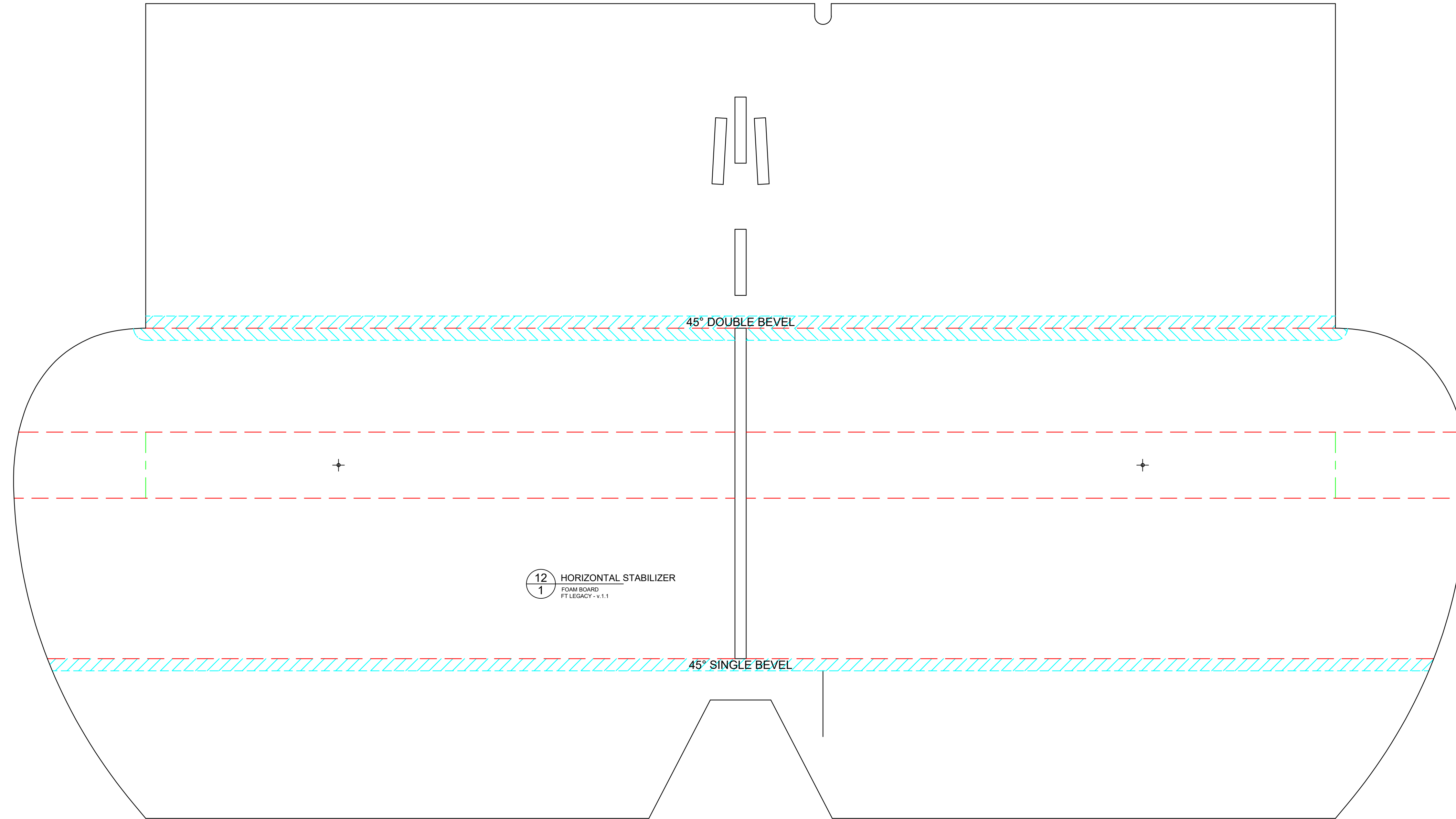
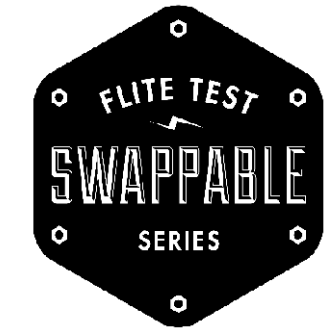
REMOVE AFTER ASSEMBLY

16 RIGHT WING  
1 FOAM BOARD  
FT LEGACY - v.1.1

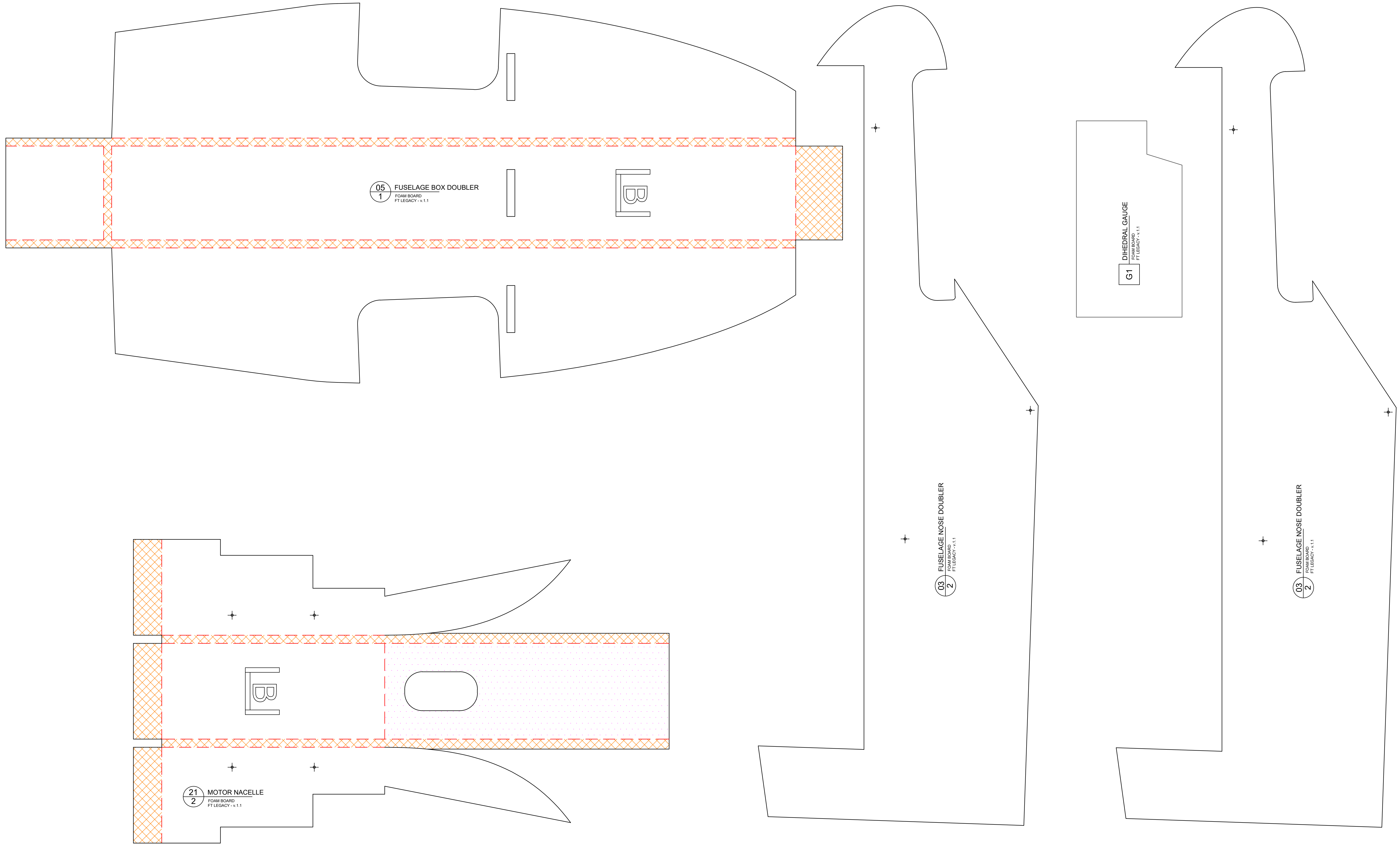
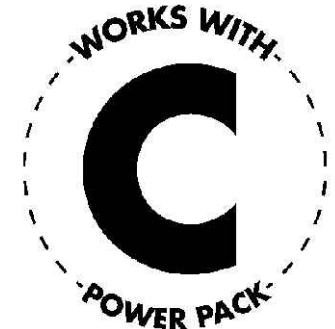
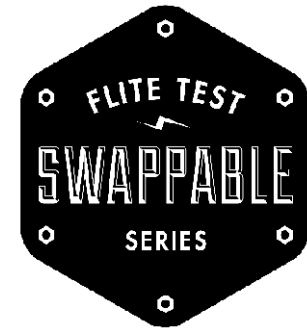
04 SERVO SUPPORT  
2 FOAM BOARD  
FT LEGACY - v.1.1

13 HORIZONTAL STABILIZER SPAR  
1 FOAM BOARD  
FT LEGACY - v.1.1

22 NACELLE BOTTOM PLATE  
2 FOAM BOARD  
FT LEGACY - v.1.1



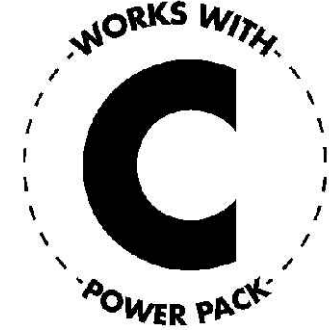
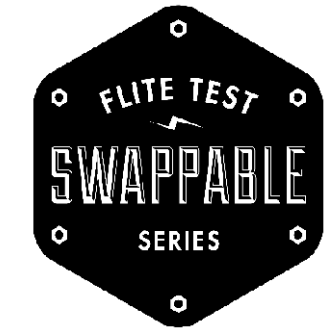




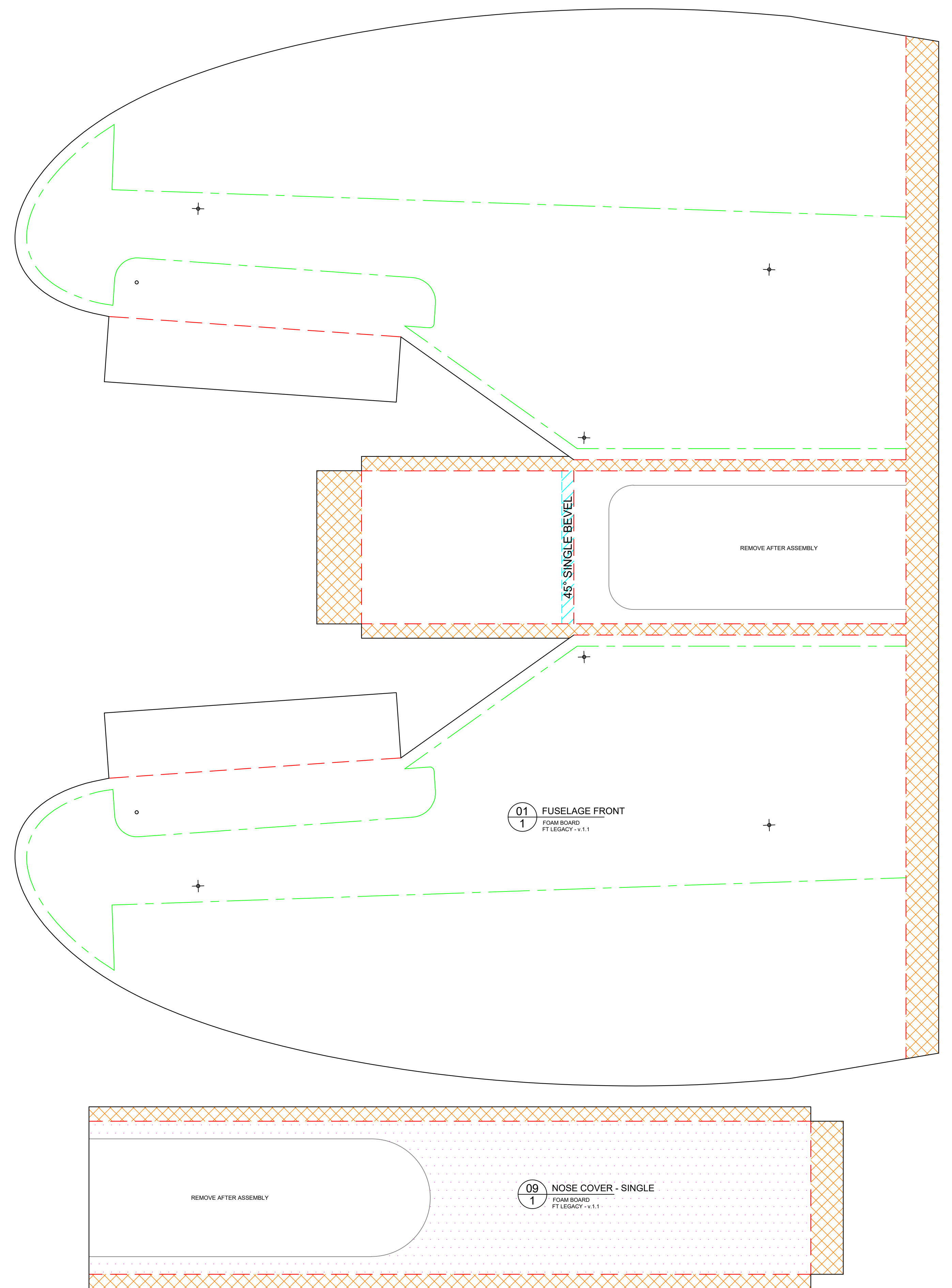
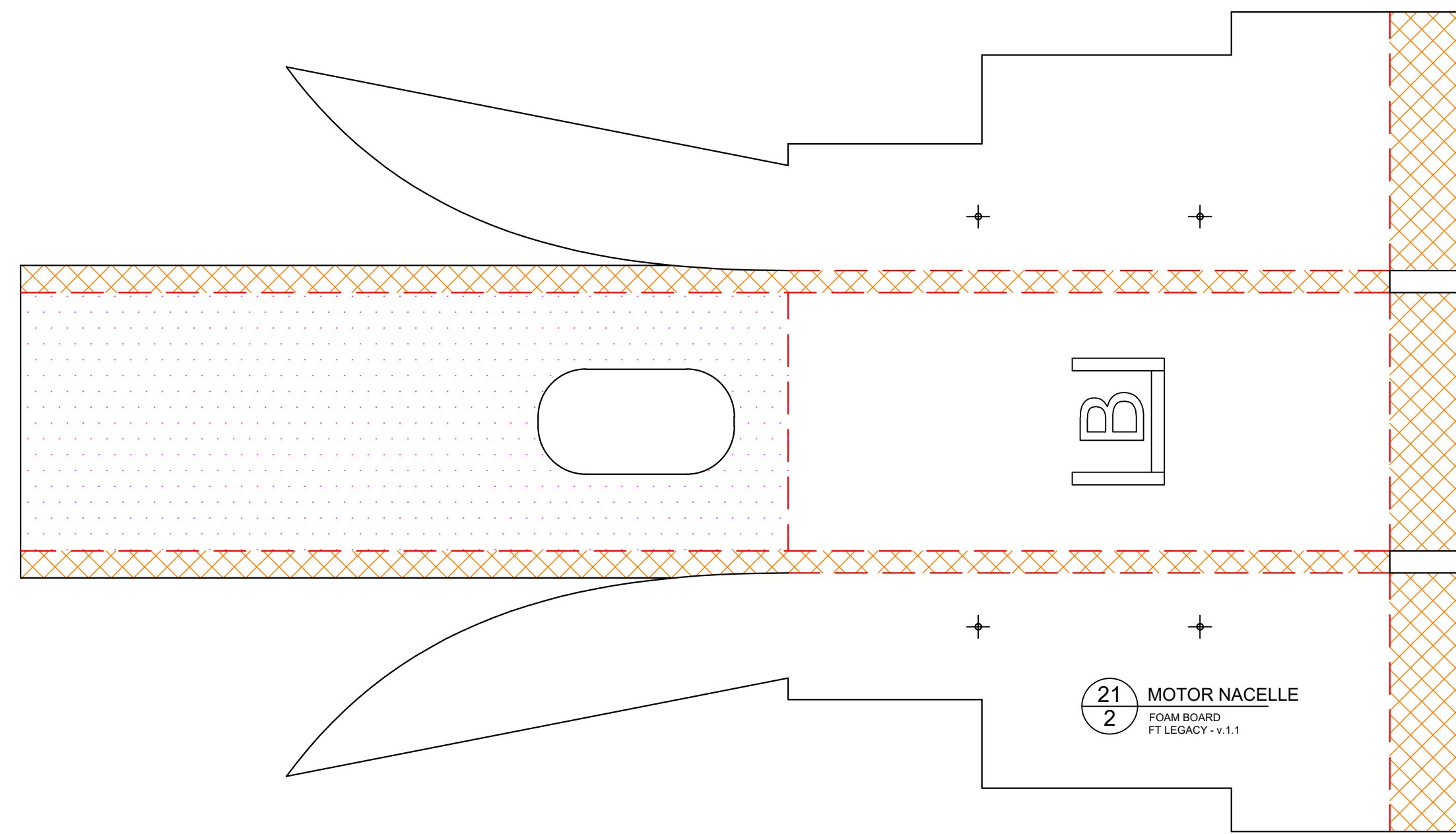
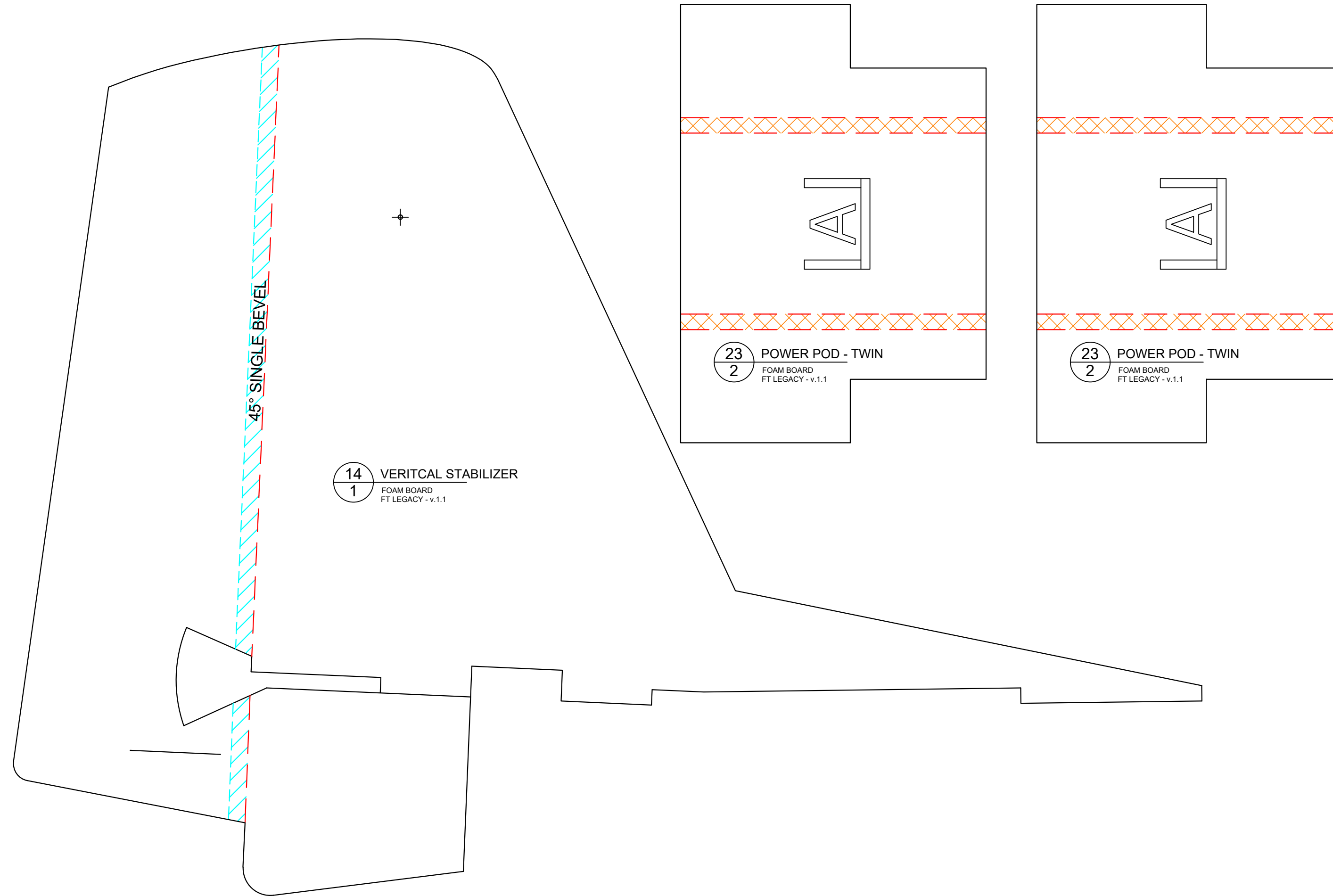
# FT Legacy



Designed By: Josh Bixler  
Drawing By: Dan Sponholz  
Version: 1.1  
Date: 2018.11.20



www.flitetest.com

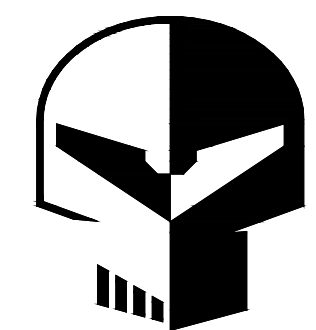
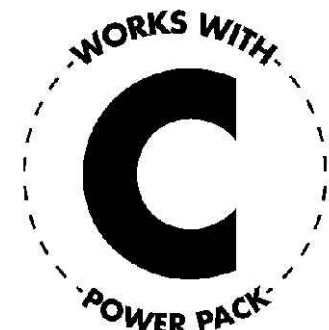
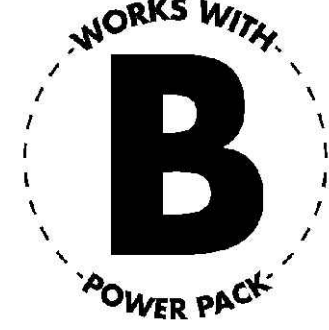




# FT Legacy



Designed By: Josh Bixler  
Drawing By: Dan Sponholz  
Version: 1.1  
Date: 2018.11.20



## SPONZ



www.flitetest.com

