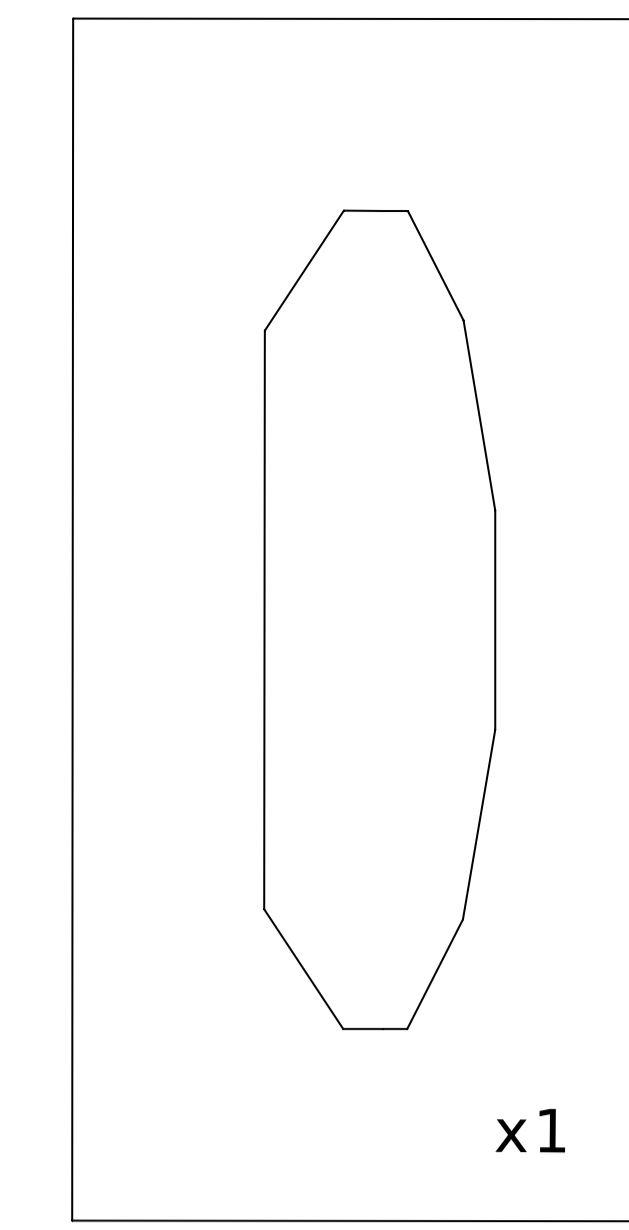
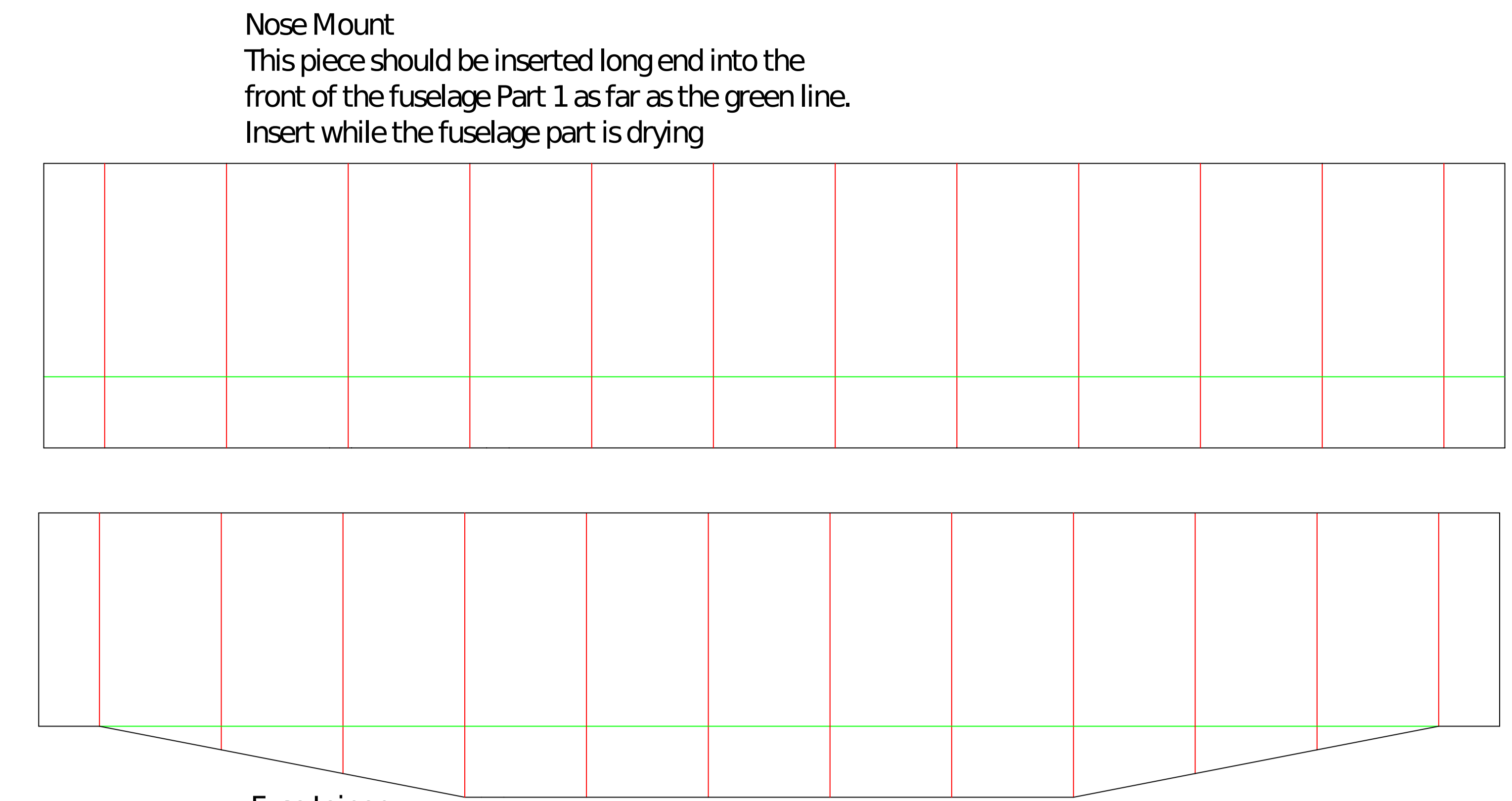


Frame 4
Back of Nose Part 3
Front and Back of Fuselage Part 1
Front of Fuselage Part 2

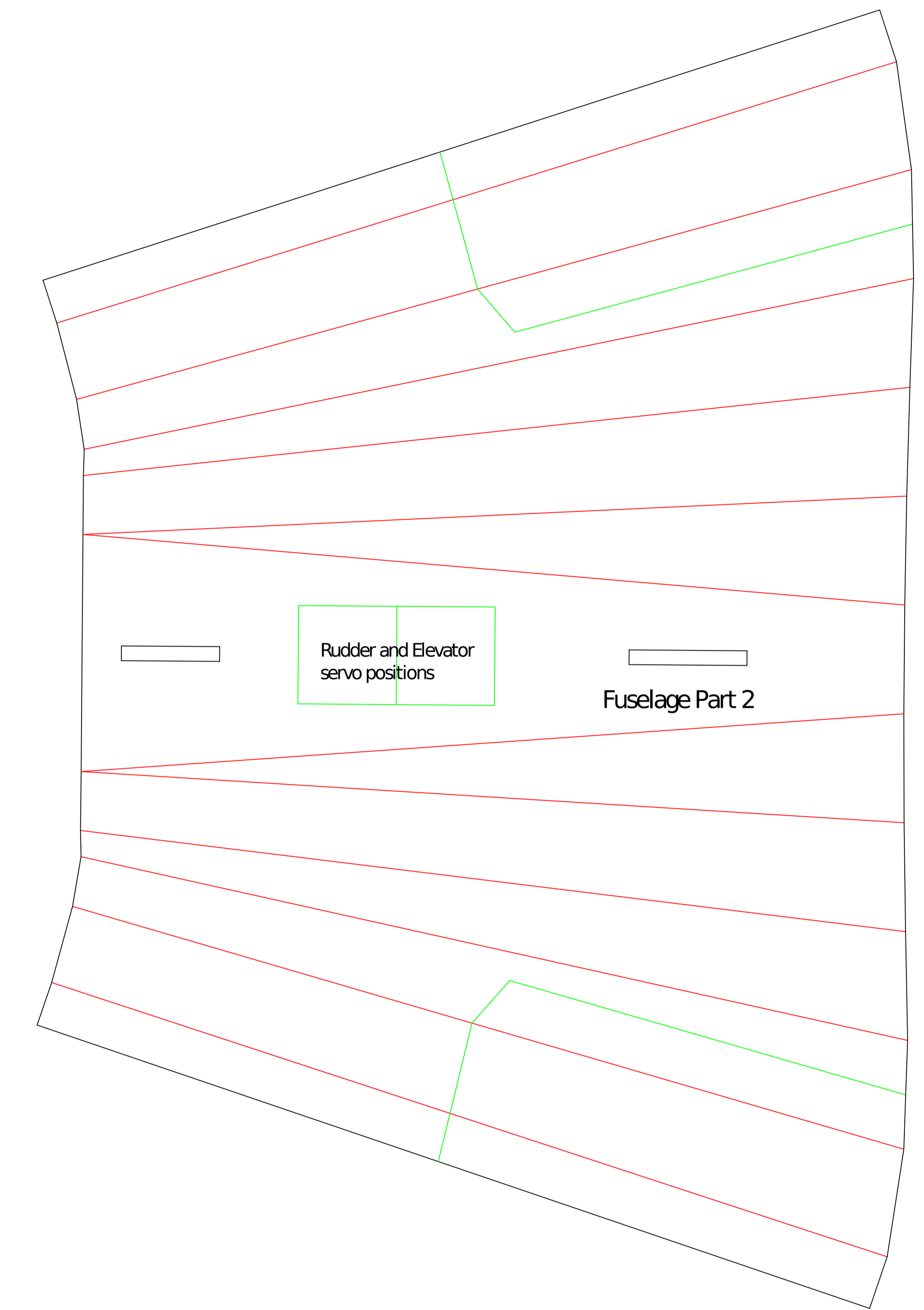
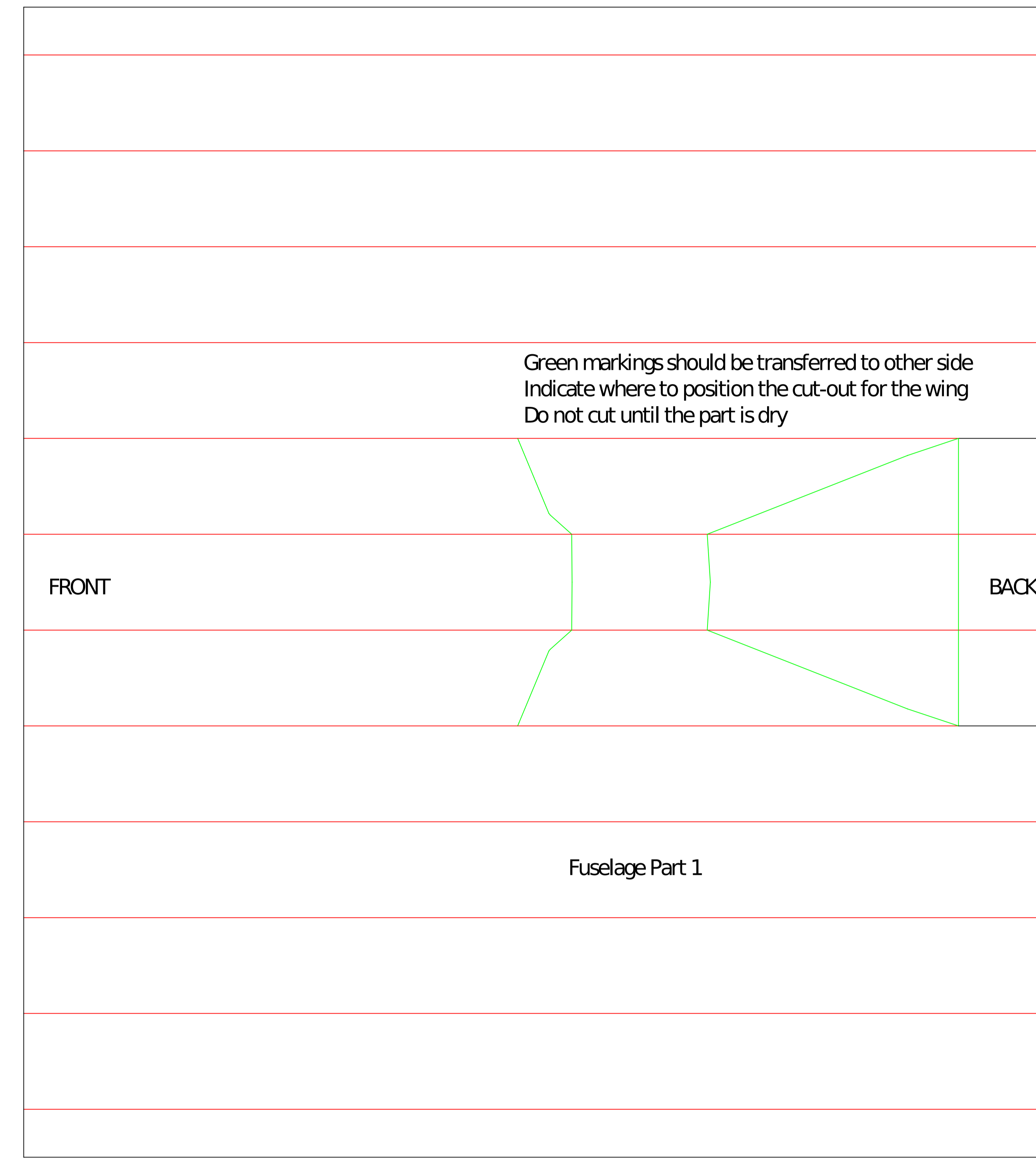


Frame 5
Back of Fuselage Part 2 Only

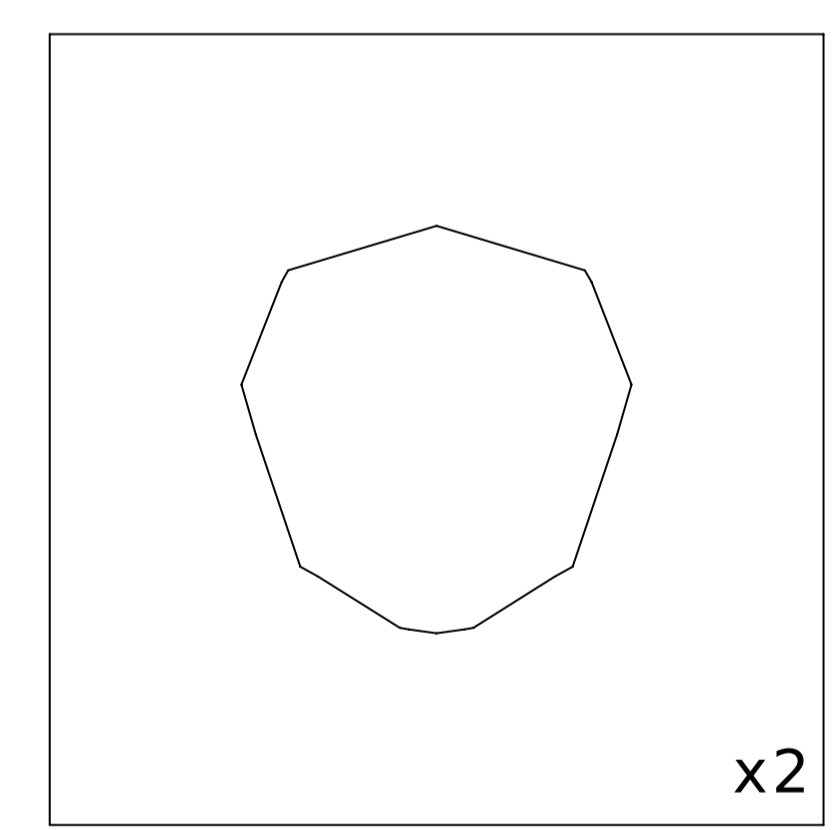


Nose Mount
This piece should be inserted long end into the front of the fuselage Part 1 as far as the green line. Insert while the fuselage part is drying

Fuse Joiner
This piece should be inserted long end into the rear of the fuselage Part 1 as far as the green line. Insert while the fuselage part is drying

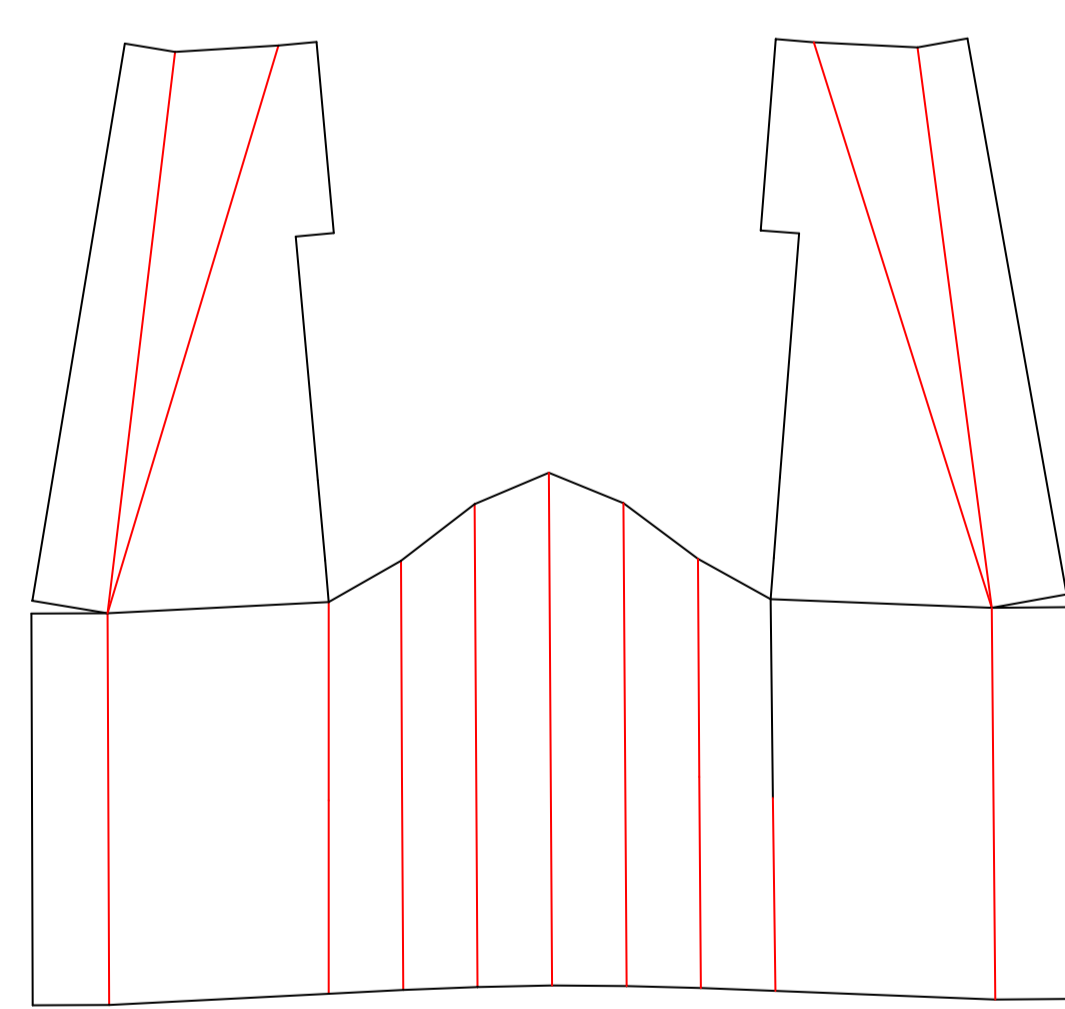
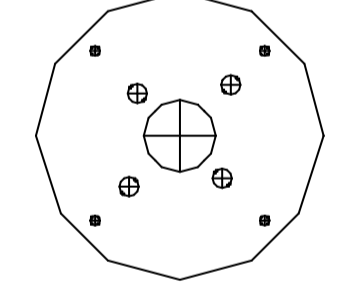


Green lines outline cargo door. Transfer to other side of foam and only cut when this piece is dry

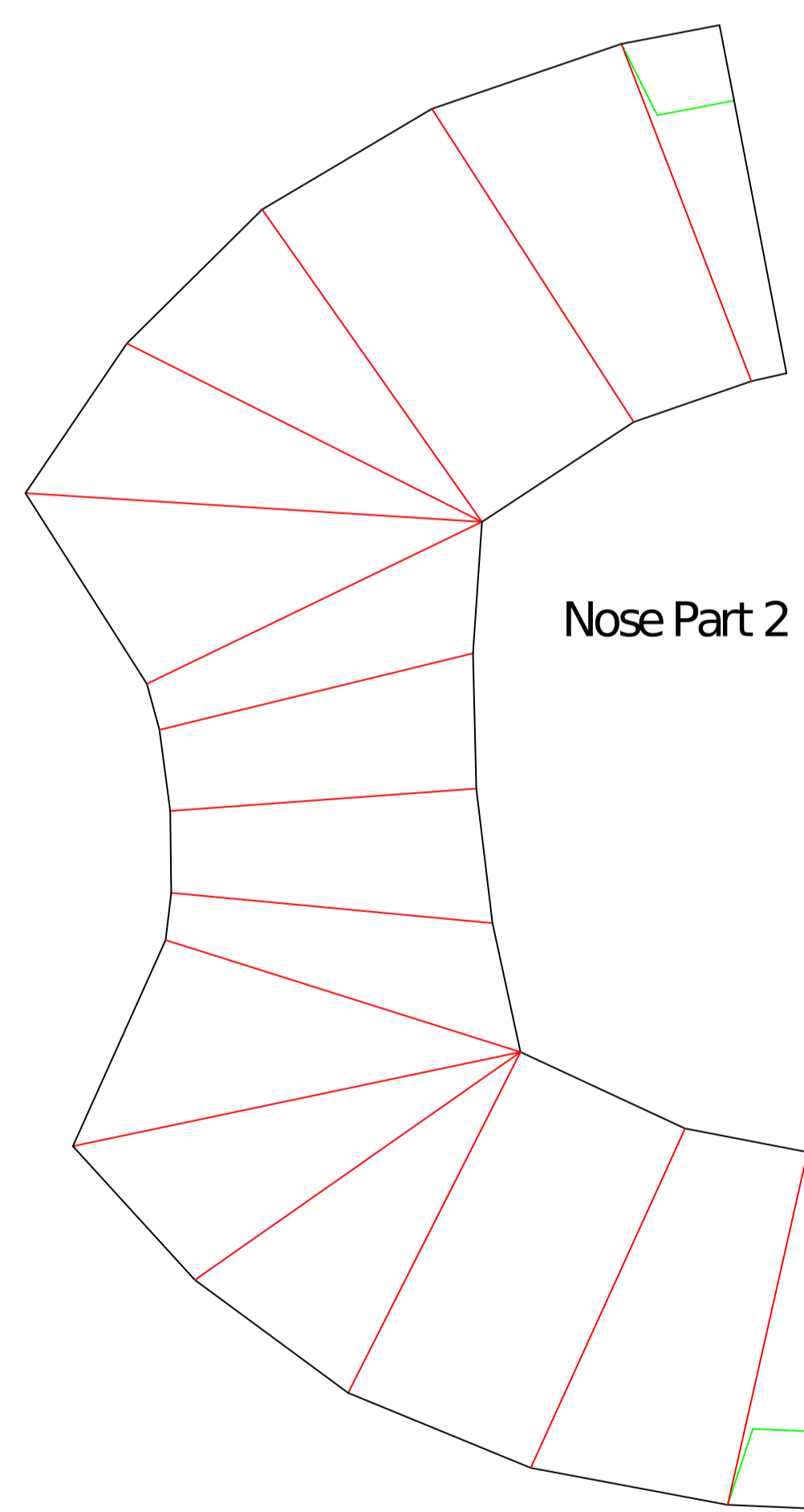


Frame 1
Back of Nose Part 1
Front of Nose Part 2

Template for 1/8" ply motor mount and firewall 8 total needed. Motor mount holes are 16mm and 19mm spacing

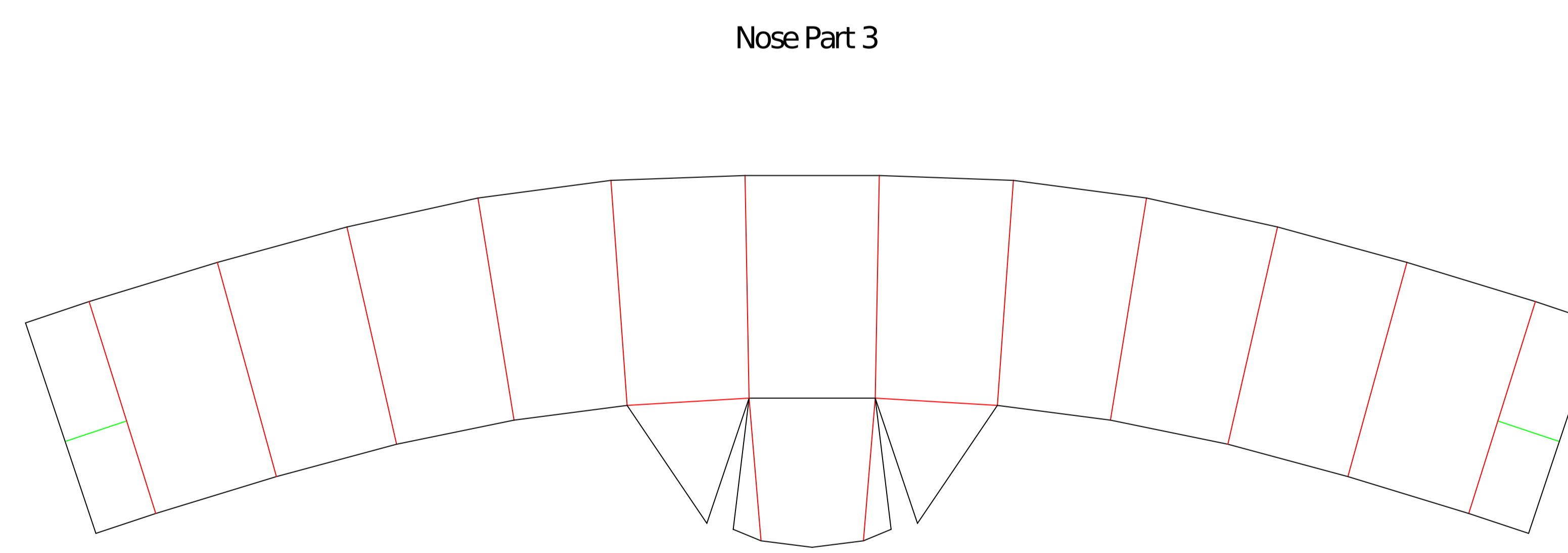


Motor Nacelle (x4)



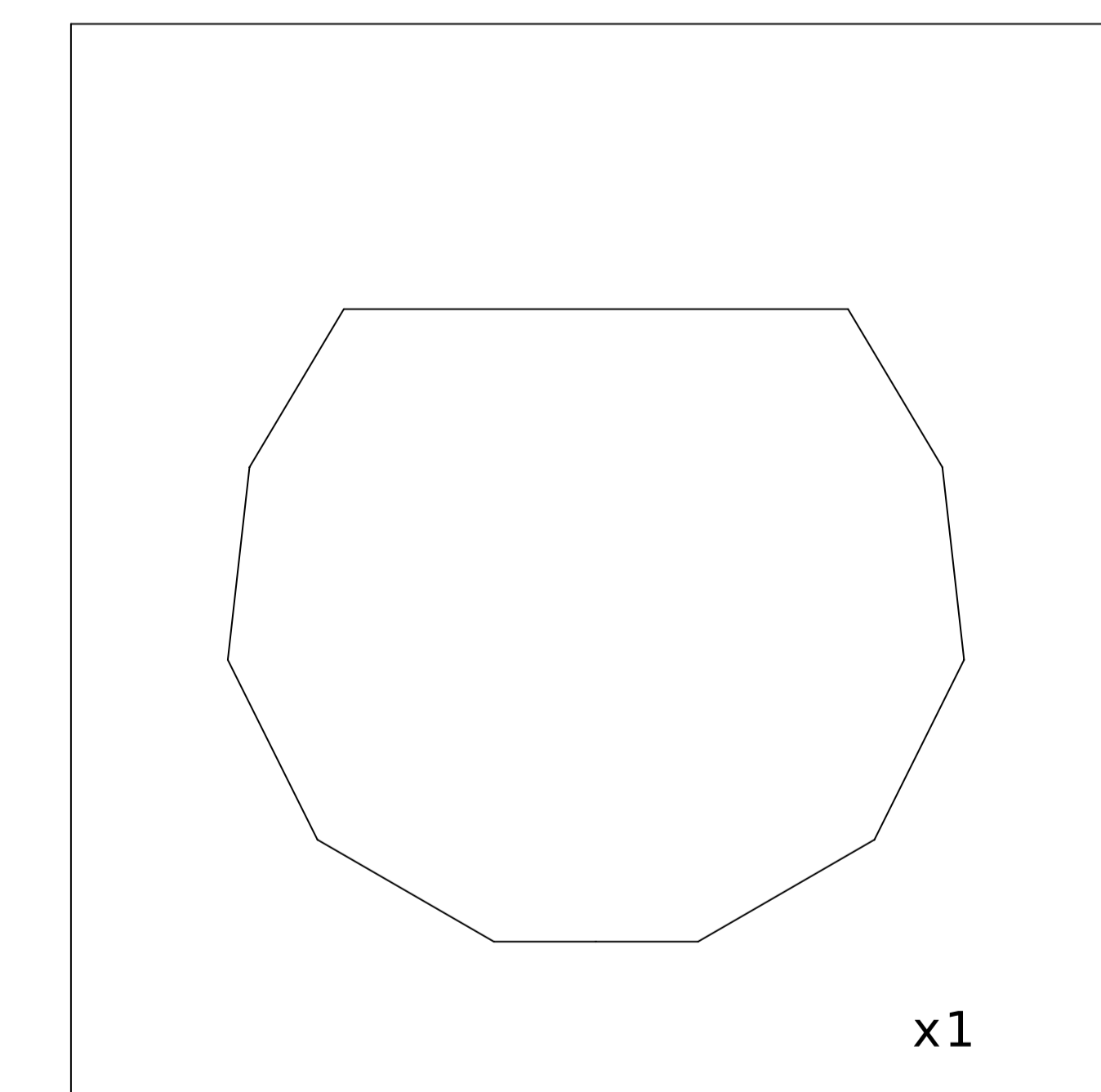
Nose Part 2

Green lines mark cutout for nose wheel if installed

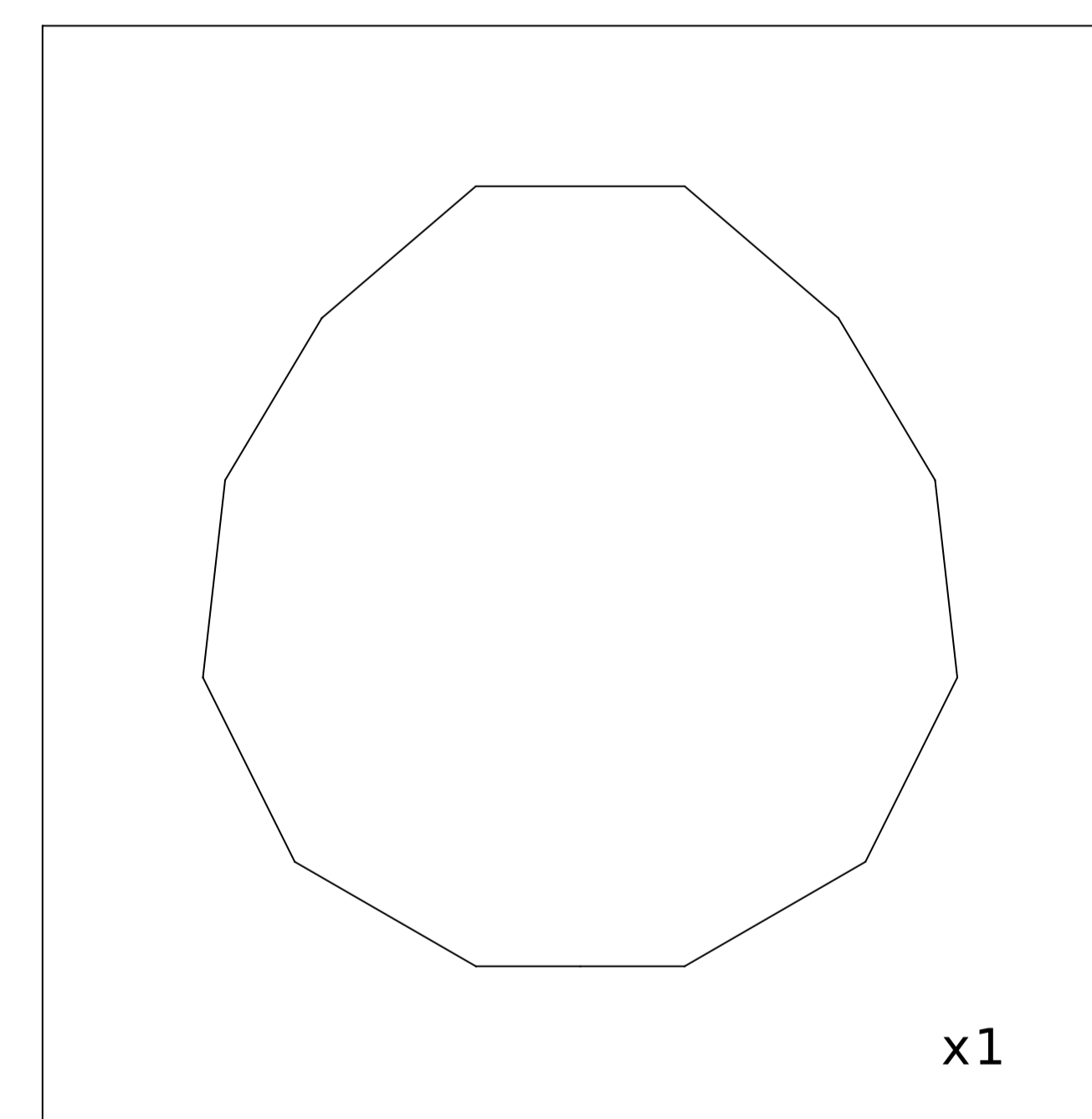


Nose Part 3

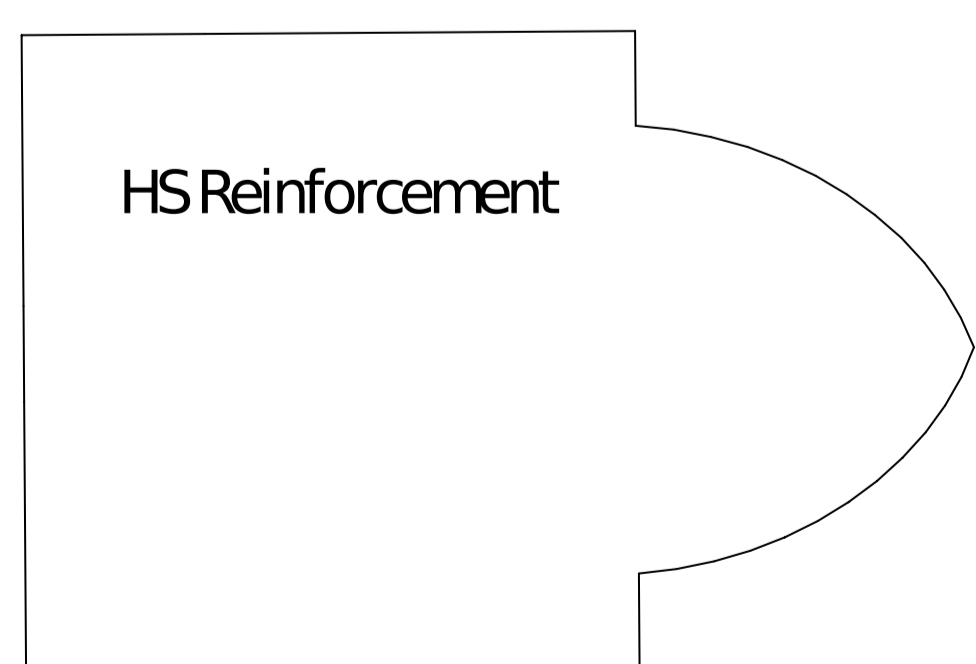
Green lines mark cutout for nose wheel if installed



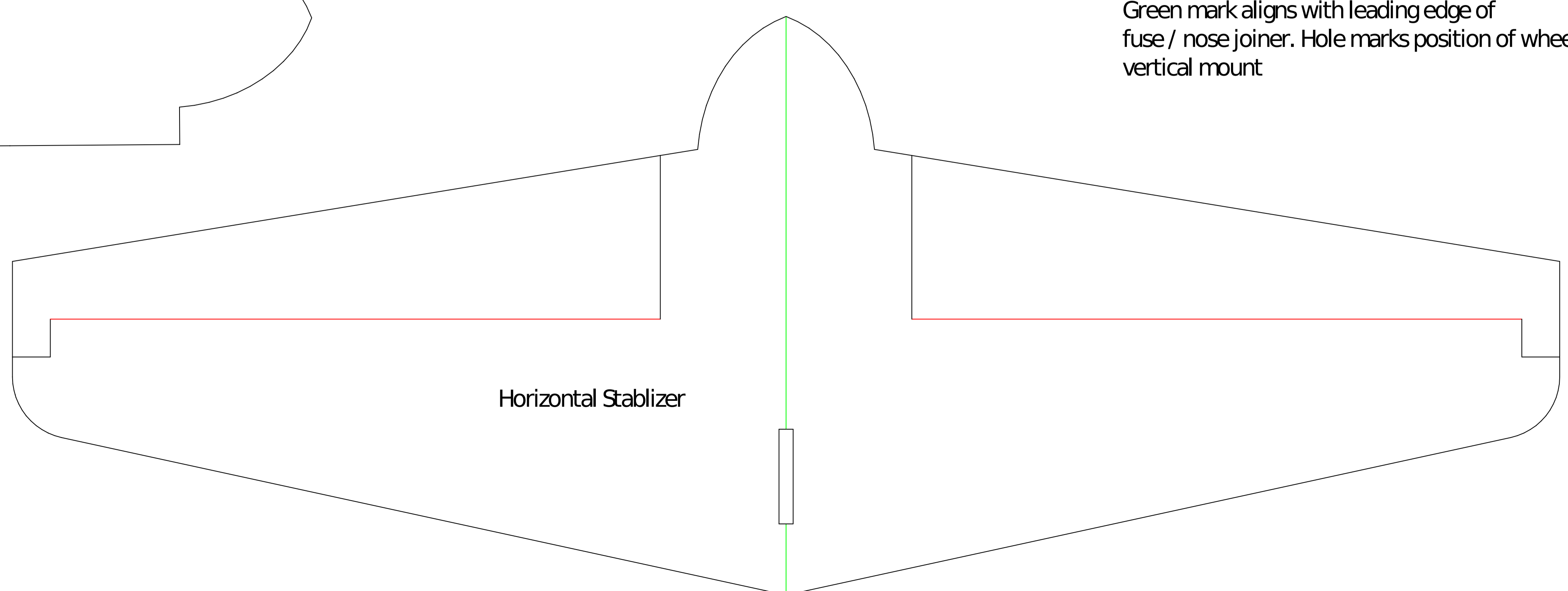
Frame 2
Back of Nose Part 2 Only



Frame 3
Front of Nose Part 3 Only



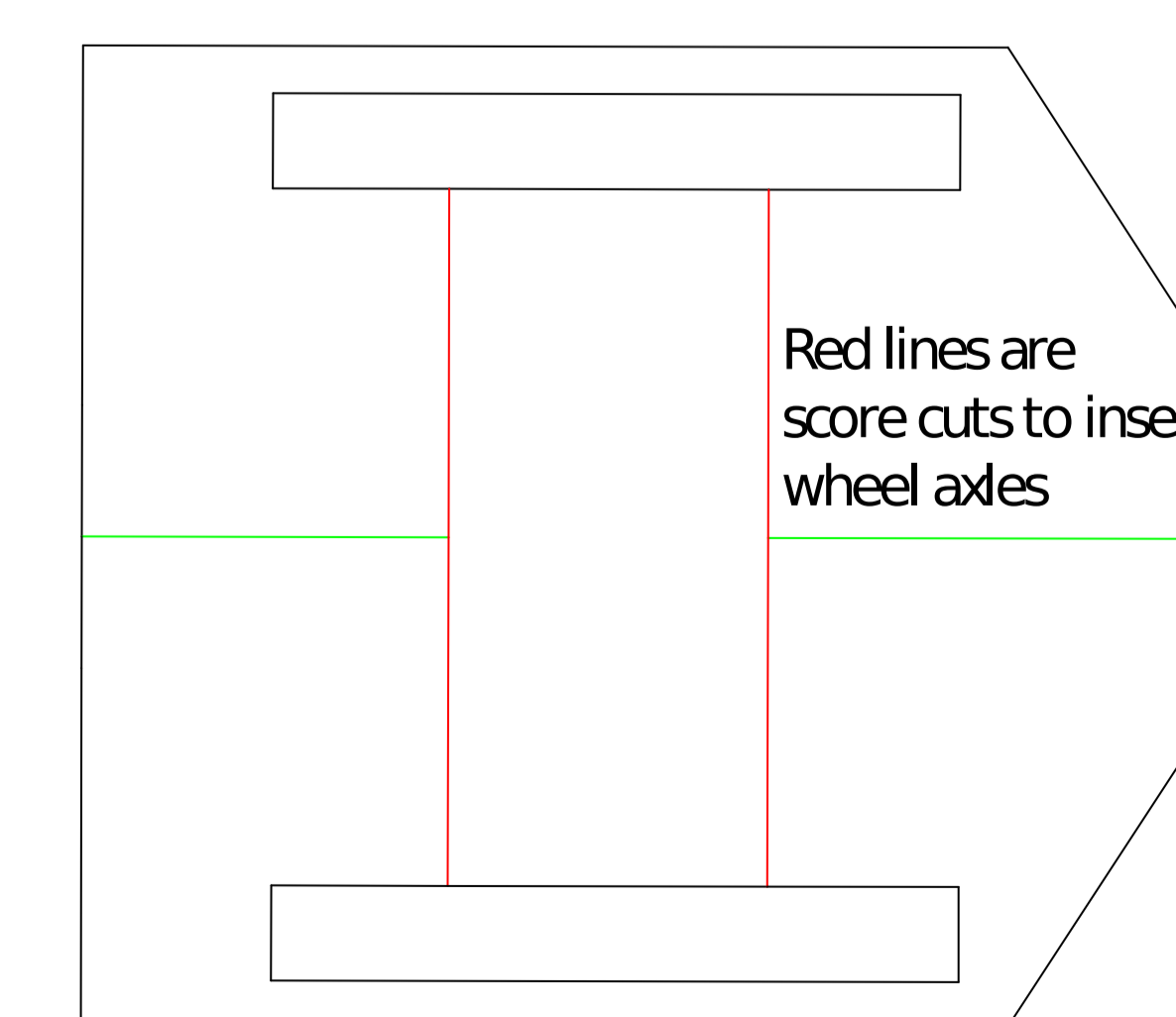
Template for using 12 inch paint stirrer stick for nose wheel support



Green mark aligns with leading edge of fuse / nose joiner. Hole marks position of wheel vertical mount



Vertical Stabilizer



Wheel mounting plate

Wheel Arches

