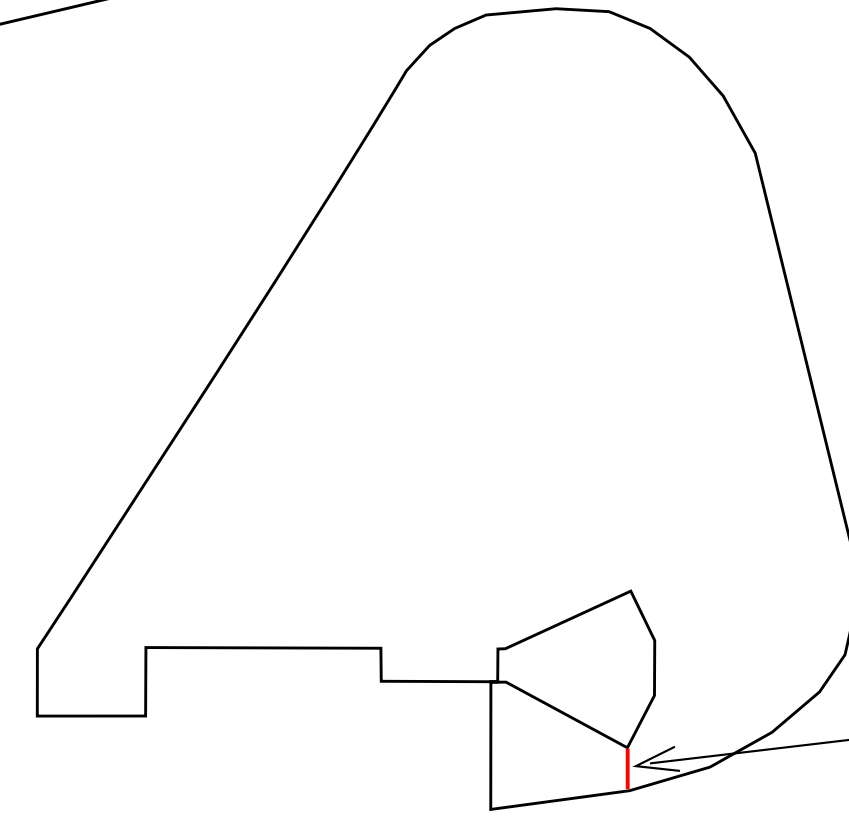
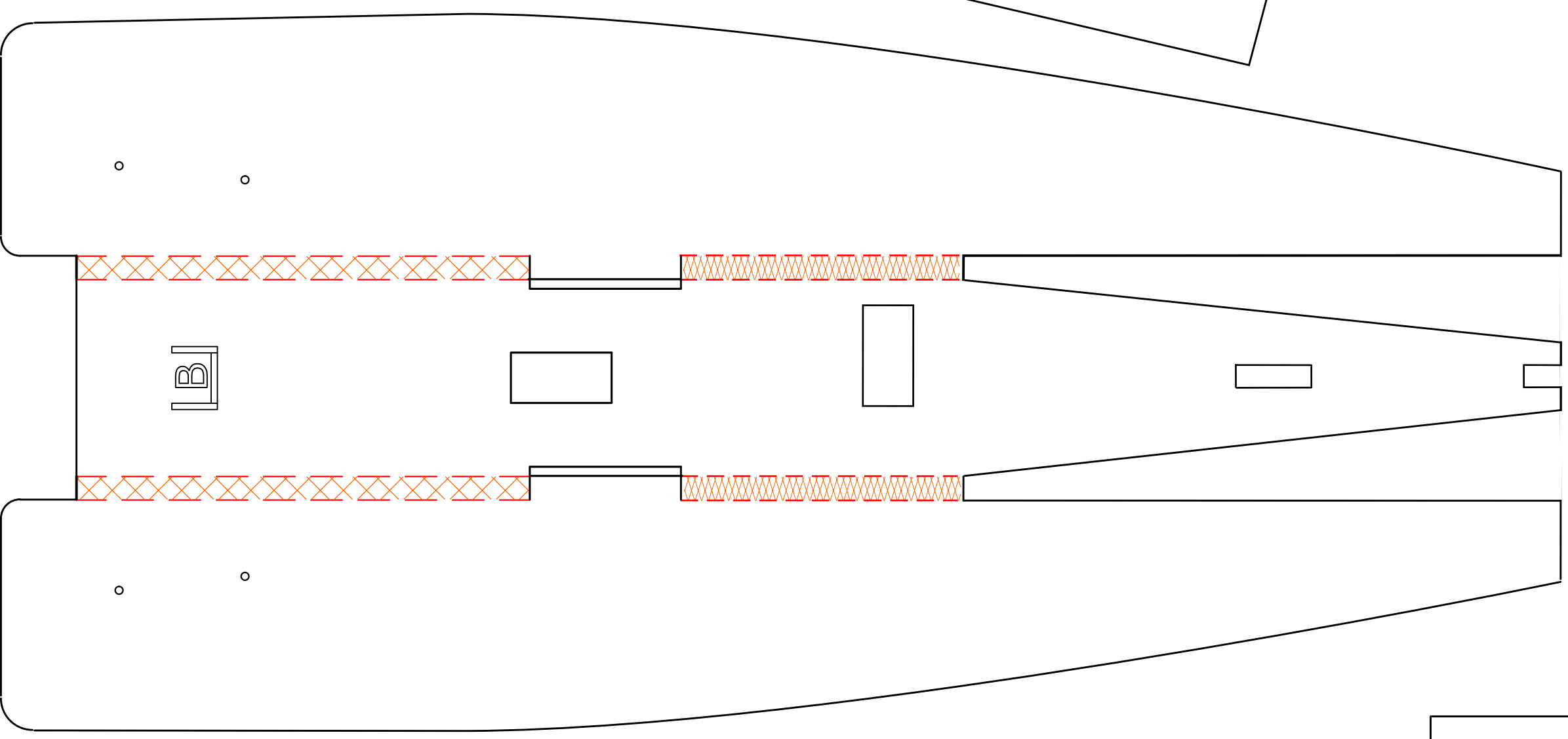
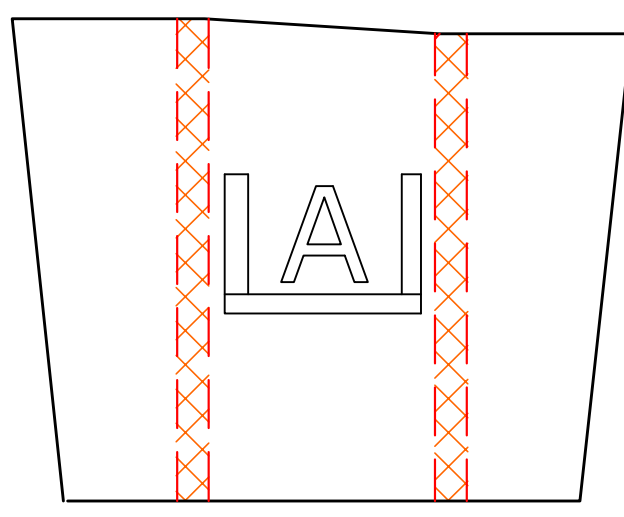
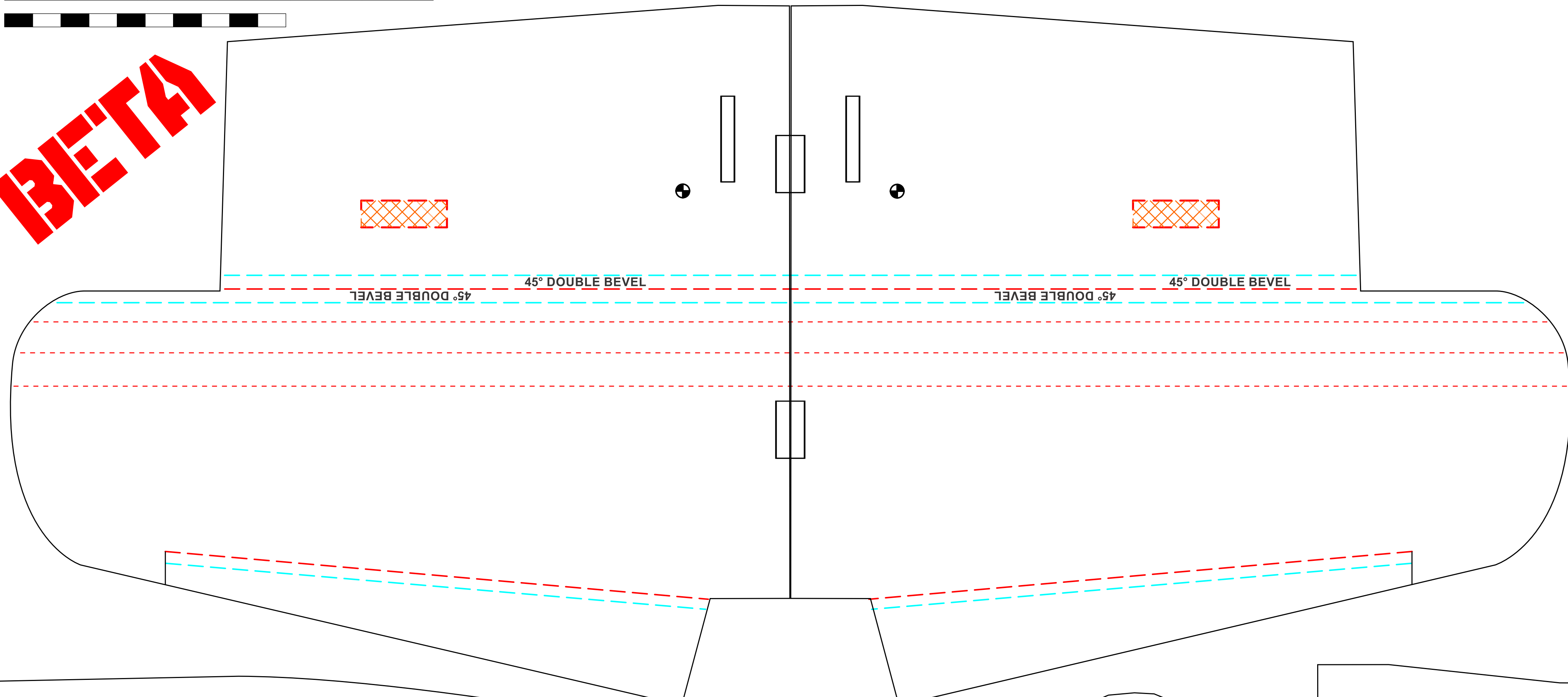
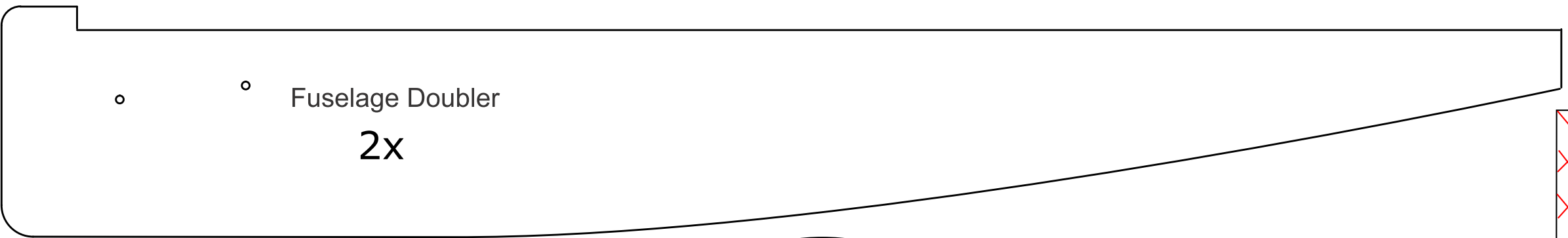
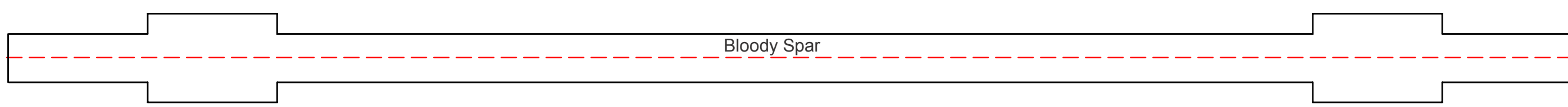
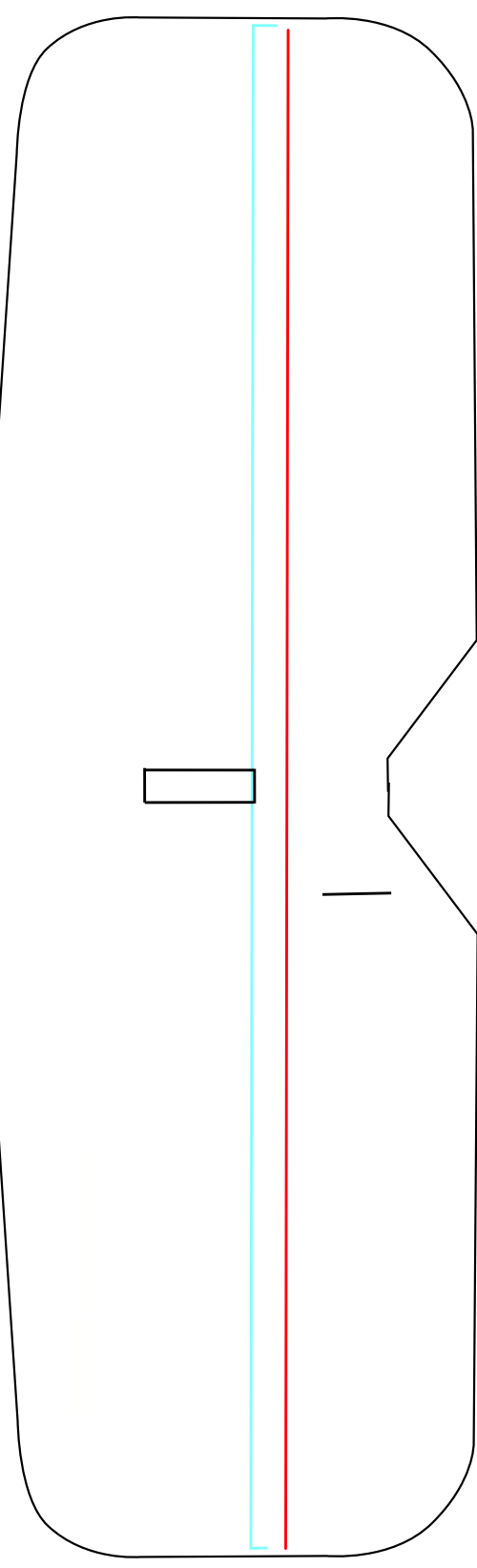




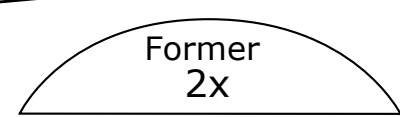
BETA



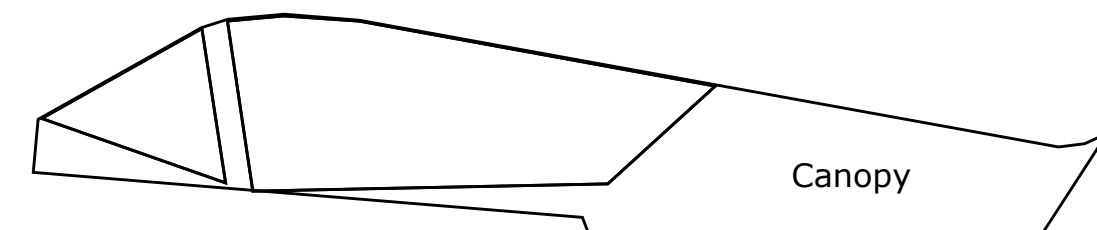
Note:
You will have to cut and then fold back the rudder to insert Horizontal stab.



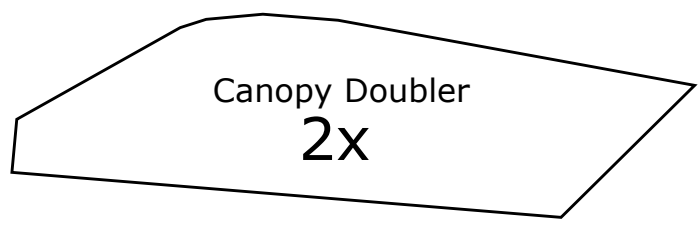
Fuselage Doubler
2x



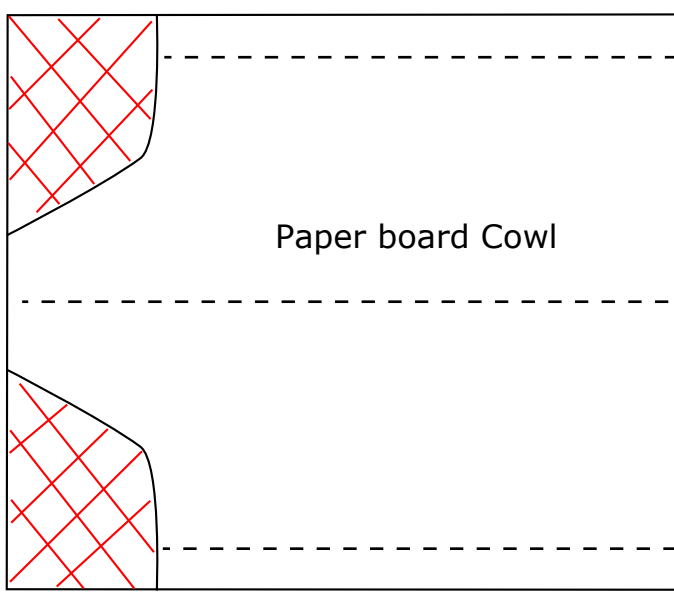
Former
2x



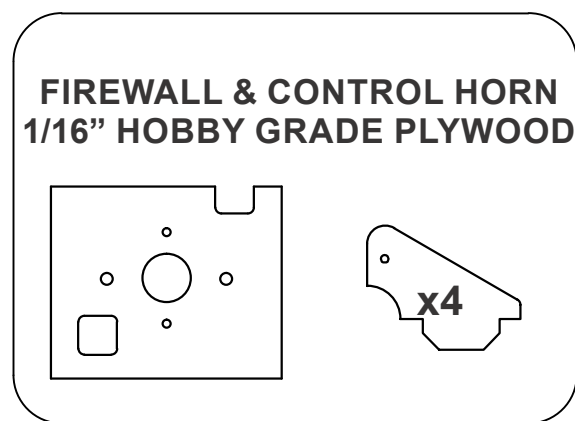
Canopy



Canopy Doubler
2x



Paper board Cowl



FIREWALL & CONTROL HORN
1/16" HOBBY GRADE PLYWOOD



Drawing by Thomas Grotzke