

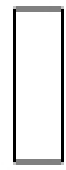
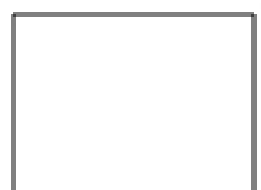
All ( )  
Dep

YAK54

Plans designed by  
Robert Viskil

parts cut out of 6mm  
carbon or EPP foam

4



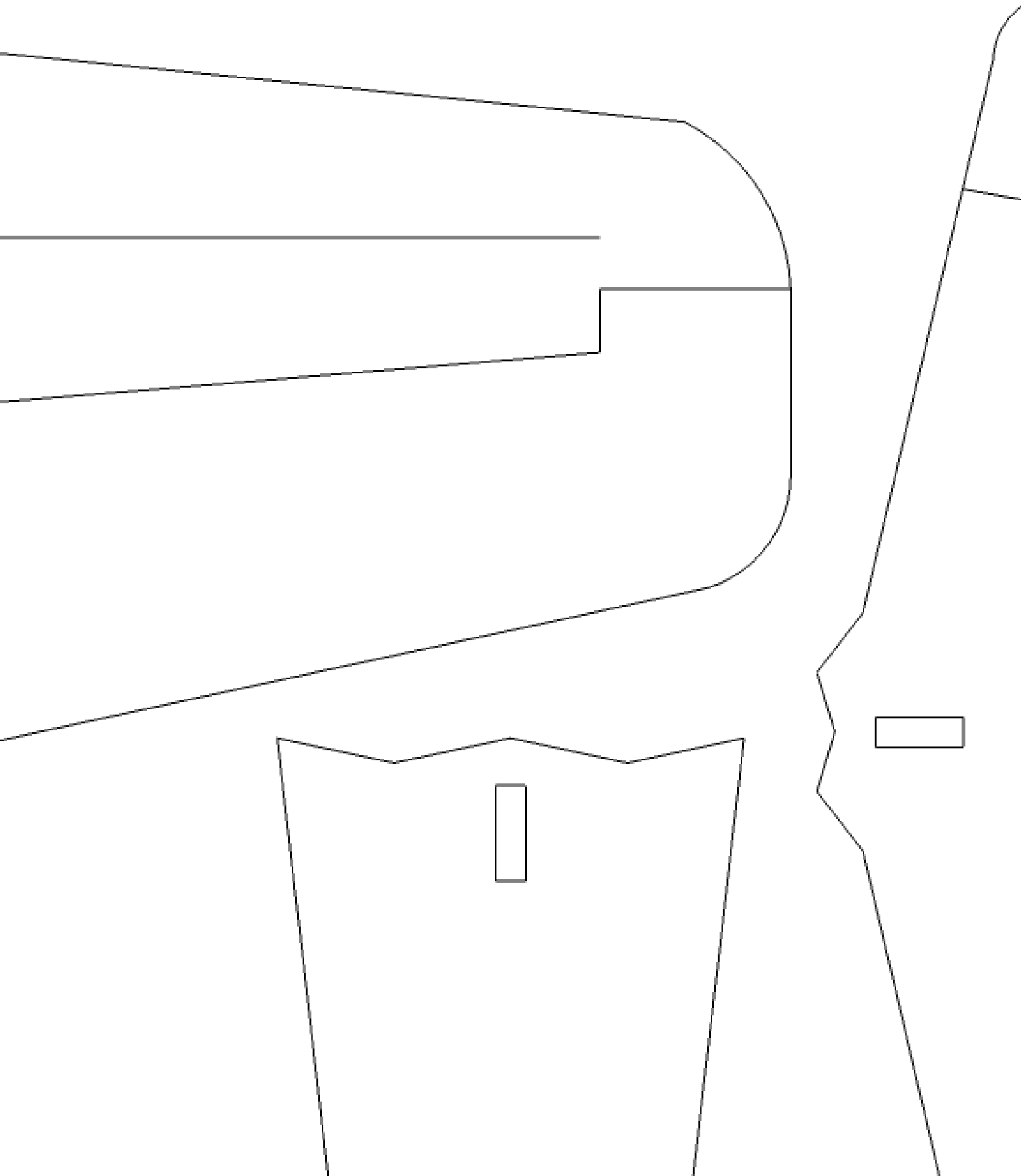


3mm carbon rod for main  
wing brace

The diagram shows a technical drawing of a wing brace assembly. It features a horizontal line at the top with a small upward-pointing peak on the left side. A diagonal line extends from the right end of this horizontal line downwards and to the right. A second horizontal line is positioned below the first. A vertical line descends from the left end of the second horizontal line. A diagonal line extends from the right end of the second horizontal line downwards and to the right, parallel to the first diagonal line. A circular hole is located at the bottom right of the diagram, with a smaller concentric circle inside it. A leader line points from the text '3mm carbon rod for main wing brace' to the horizontal line between the two main horizontal lines.

1/16" lite ply

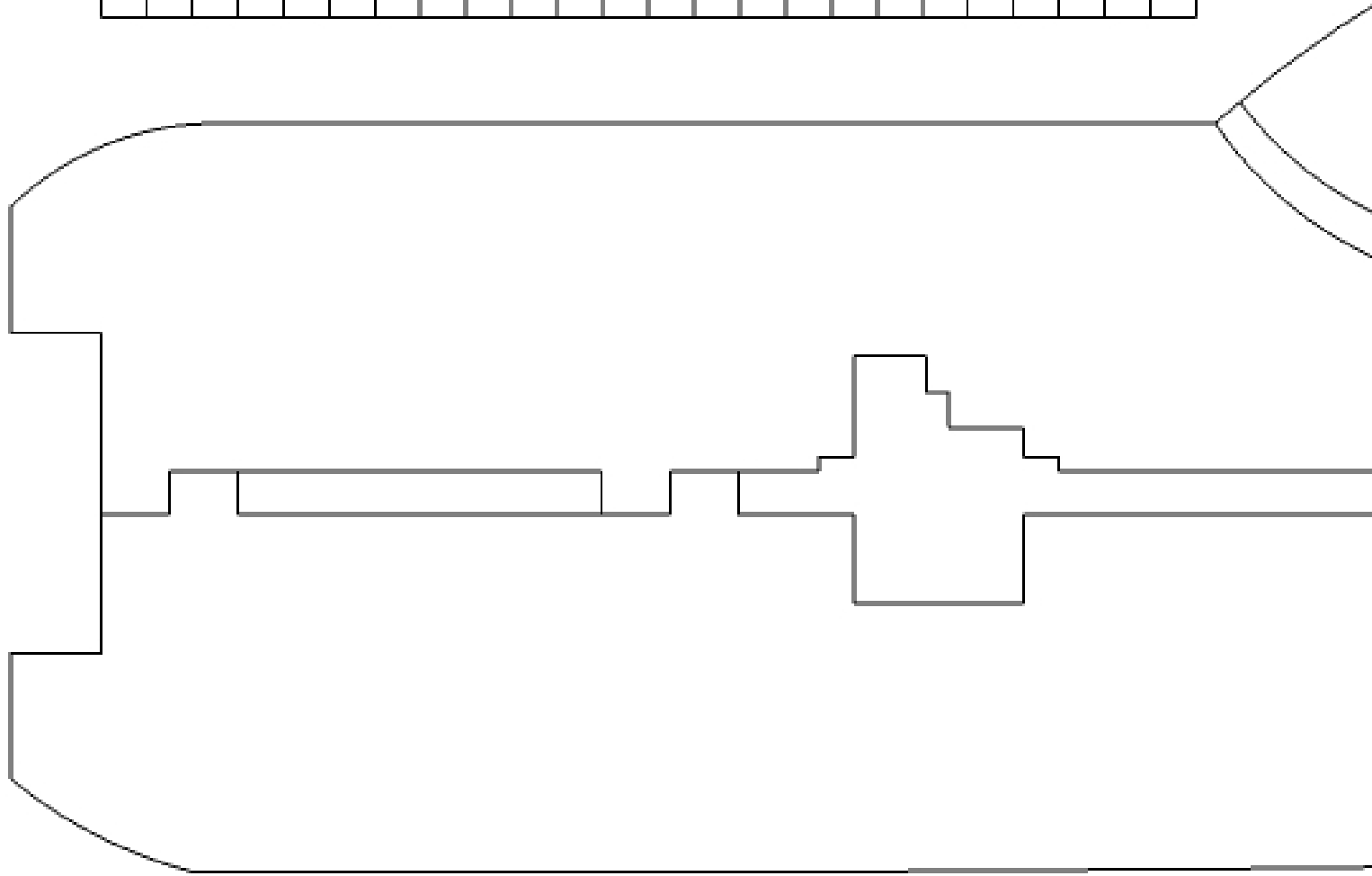
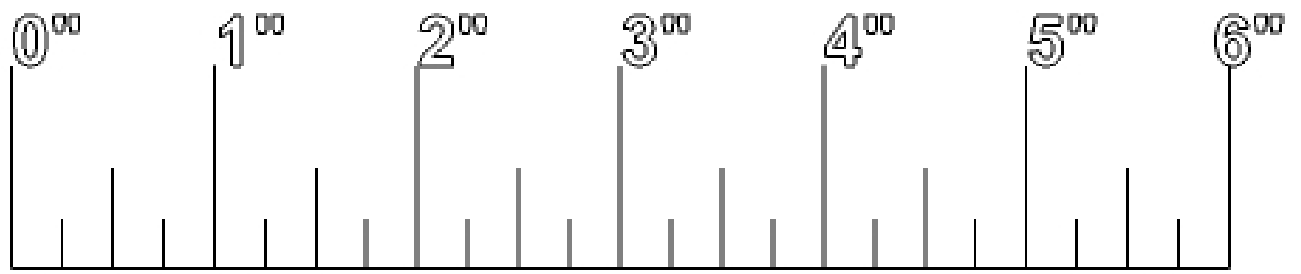
1 1/4" x 1/4" x 1/4"

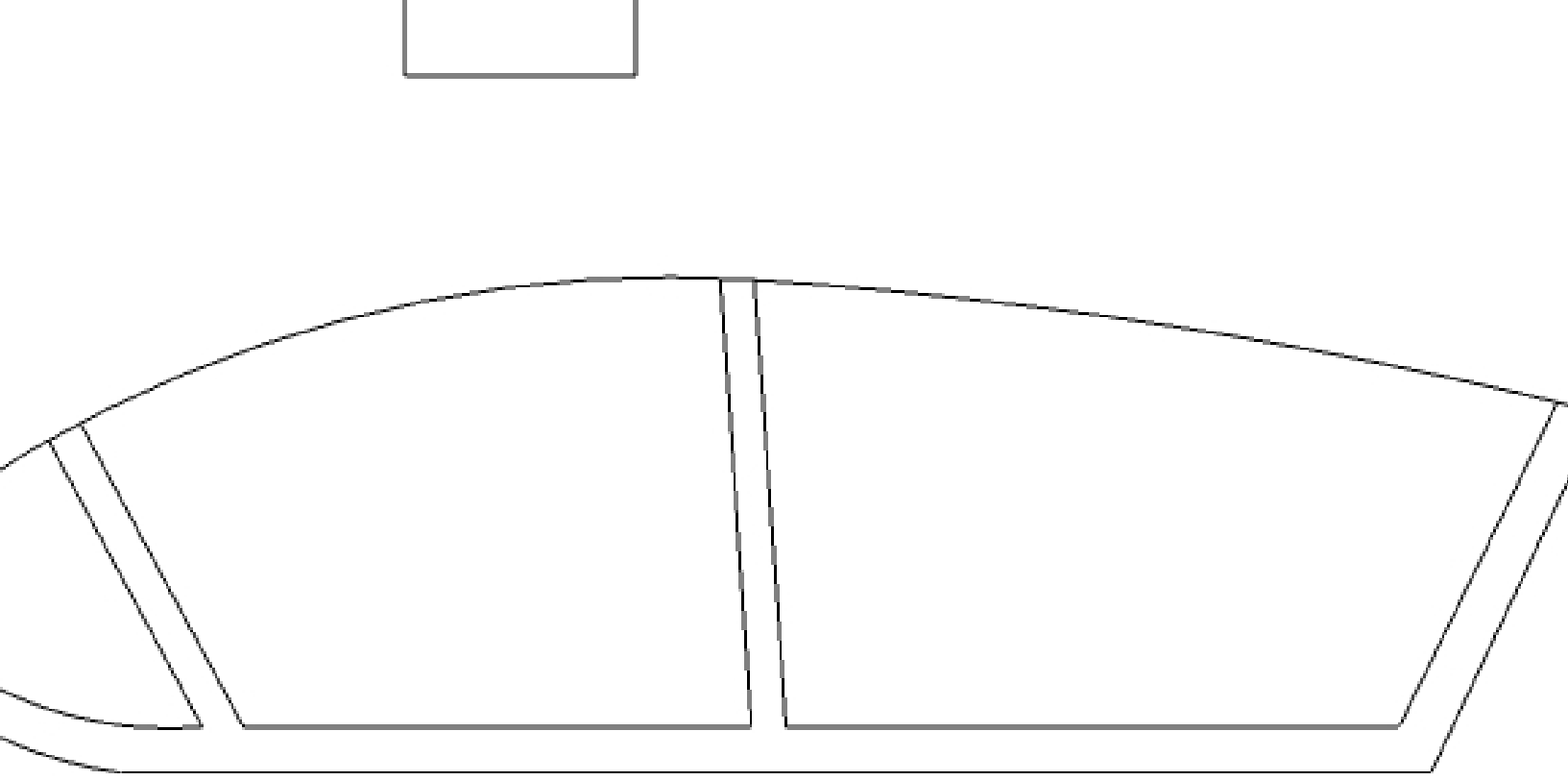




2mm  
carbon  
for elevator

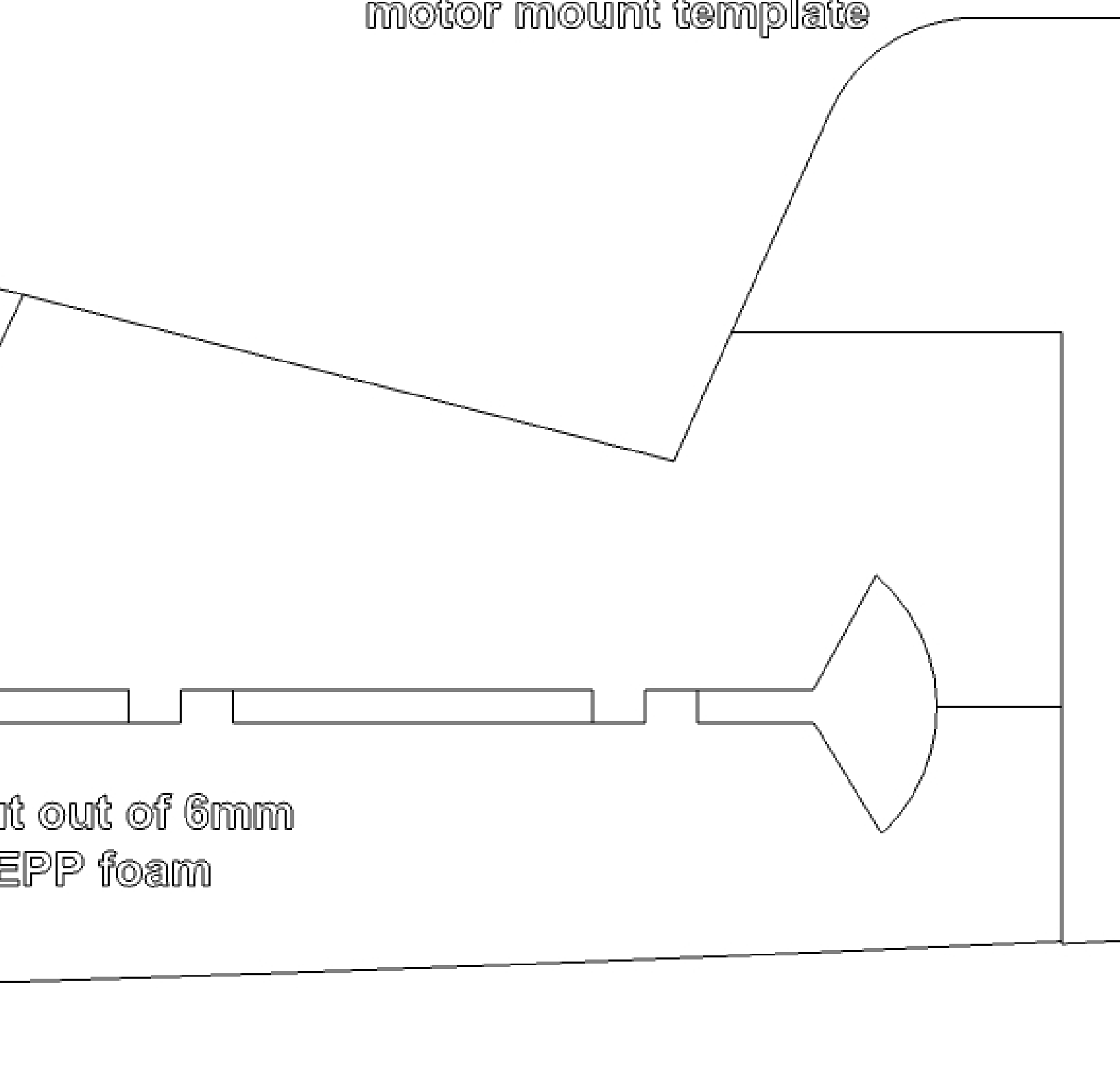
The image shows a technical drawing of a vertical component, possibly a part of an elevator. The component is a long, narrow rectangle with a complex cutout on its right side. The cutout starts near the top, goes inward, then down, then outward, then down, then inward, and finally down to the bottom. A label is positioned on the left side of the component, pointing to a specific area. The label text is '2mm carbon for elevator'. The drawing is enclosed in a rectangular border.





All parts cut  
Depron or E

motor mount template



cut out of 6mm  
EPP foam



